

TACAN X RWY 31L

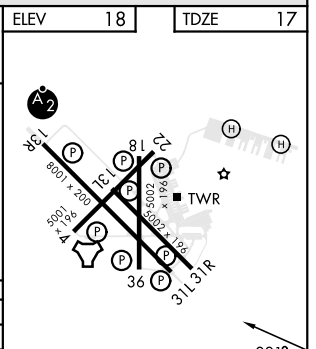
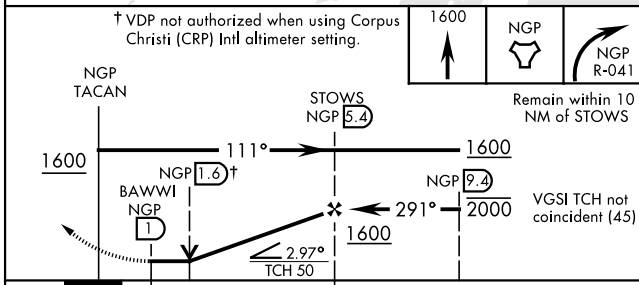
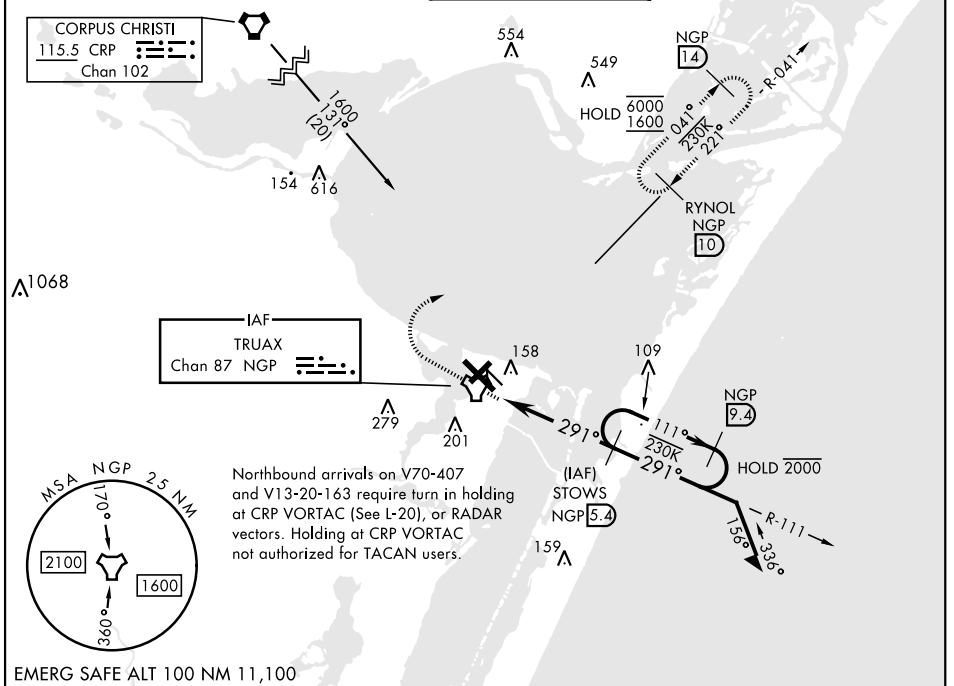
TACAN NGP Chan 87	APCH CRS 291°	Rwy Idg 8001 TDZE 17 Arpt Elev 18
--------------------------	----------------------	--------------------------------------------------------------

[USN]

CORPUS CHRISTI NAS (TRUAX FLD) (KNGP)

▼ When local altimeter setting not received, use Corpus Christi (CRP) Intl altimeter setting. **MISSED APPROACH:** Climb to 1600 direct NGP TACAN and turn right to intercept R-041 to RYNOL and hold.

ATIS ★ 127.9 290.9	APP CON 128.675 343.75	NAVY CORPUS TOWER ★ 134.85 340.2	GND CON 118.7 257.85	CLNC DEL 314.3	ASR/PAR
------------------------------	----------------------------------	--------------------------------------------	--------------------------------	--------------------------	---------



CATEGORY	A	B	C	D
S-31L	420-1 403 (500-1)	420-1½ 403 (500-1½)		
CIRCLING	460-1	480-1	520-1½	580-2
	442 (500-1)	462 (500-1)	502 (600-1½)	562 (600-2)
CORPUS CHRISTI (CRP) INTL ALTIMETER SETTING				
S-31L	460-1 443 (500-1)	460-1¾ 443 (500-1¾)		
CIRCLING	500-1	482 (500-1)	540-1½	620-2
			522 (600-1½)	602 (700-2)

HIRL Rwy 4-22, 13R-31L				
HIRL Rwy 13L-31R, 18-36				
REIL Rwy 4-22, 13L-31R, 18-36, 31L				
FAF to MAP 4.4 NM				
Knots	60	90	120	150 180
Min:Sec	4:24	2:56	2:12	1:46 1:28

TACAN X RWY 31L

SC-3, 20 FEB 2025 to 20 MAR 2025

SC-3, 20 FEB 2025 to 20 MAR 2025