

TACAN Z RWY 31L

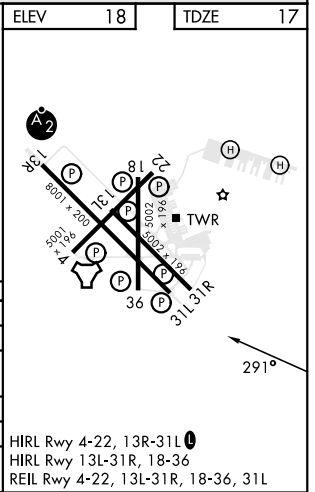
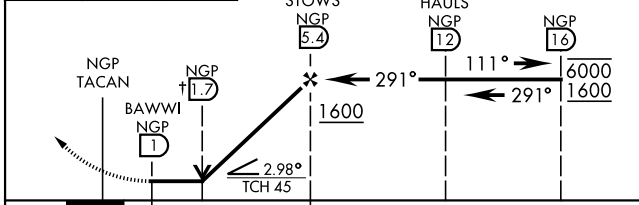
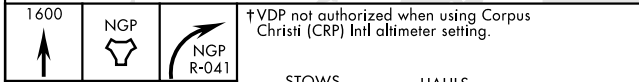
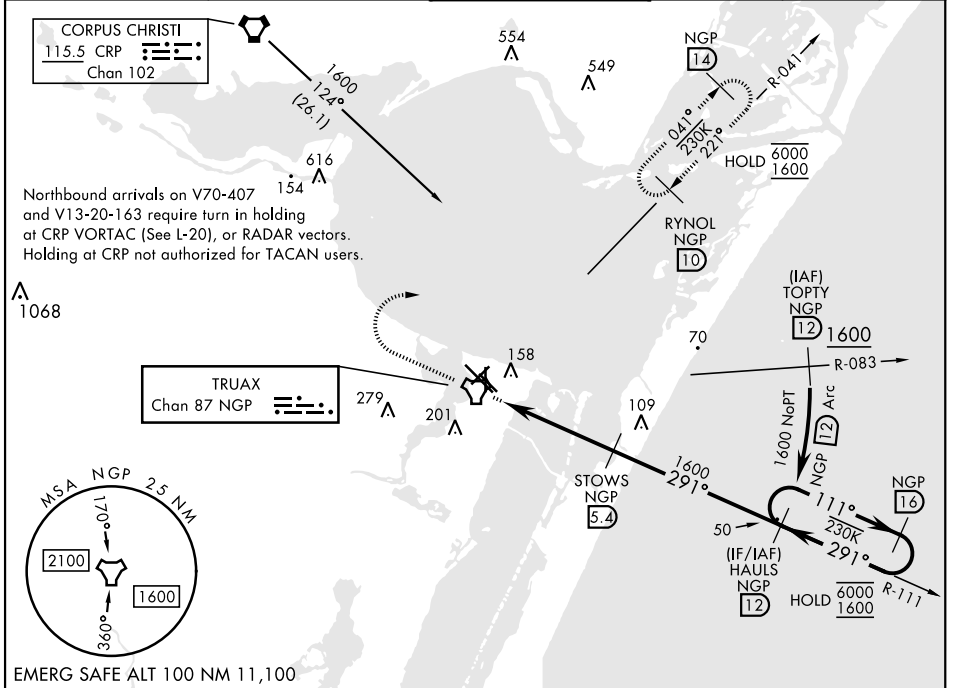
TACAN NGP Chan 87	APCH CRS 291°	Rwy Idg TDZE Arprt Elev	8001 17 18
-----------------------------	-------------------------	-------------------------------	---------------------------------------

[USN]

CORPUS CHRISTI NAS (TRUAX FLD) (KNGP)

When local altimeter setting not received, use Corpus Christi (CRP) Intl altimeter setting. MISSED APPROACH: Climb to 1600 direct NGP TACAN and turn right to intercept R-041 to RYNOL and hold.

ATIS ★ 127.9 290.9	APP CON 128.675 343.75	NAVY CORPUS TOWER ★ 134.85 340.2	GND CON 118.7 257.85	CLNC DEL 314.3	ASR/PAR
------------------------------	----------------------------------	--	--------------------------------	--------------------------	---------



CATEGORY	A	B	C	D
S-31L	420-1 403 (500-1)	420-1½ 403 (500-1½)		
CIRCLING	442 (500-1)	442 (500-1)	502 (600-1½)	562 (600-2)
CORPUS CHRISTI (CRP) INTL ALTIMETER SETTING				
S-31L	460-1 443 (500-1)	460-1¾ 443 (500-1¾)		
CIRCLING	500-1 482 (500-1)	522 (600-1½)	602 (700-2)	

CORPUS CHRISTI, TEXAS 27°42'N-97°17'W CORPUS CHRISTI NAS (TRUAX FLD) (KNGP)

Amdt 2 30NOV23

TACAN Z RWY 31L

SC-3, 20 FEB 2025 to 20 MAR 2025

SC-3, 20 FEB 2025 to 20 MAR 2025