

CORPUS CHRISTI, TEXAS

VOR/DME or TACAN Y RWY 13R

[USN]

CORPUS CHRISTI NAS (TRUAX FLD) (KNGP)

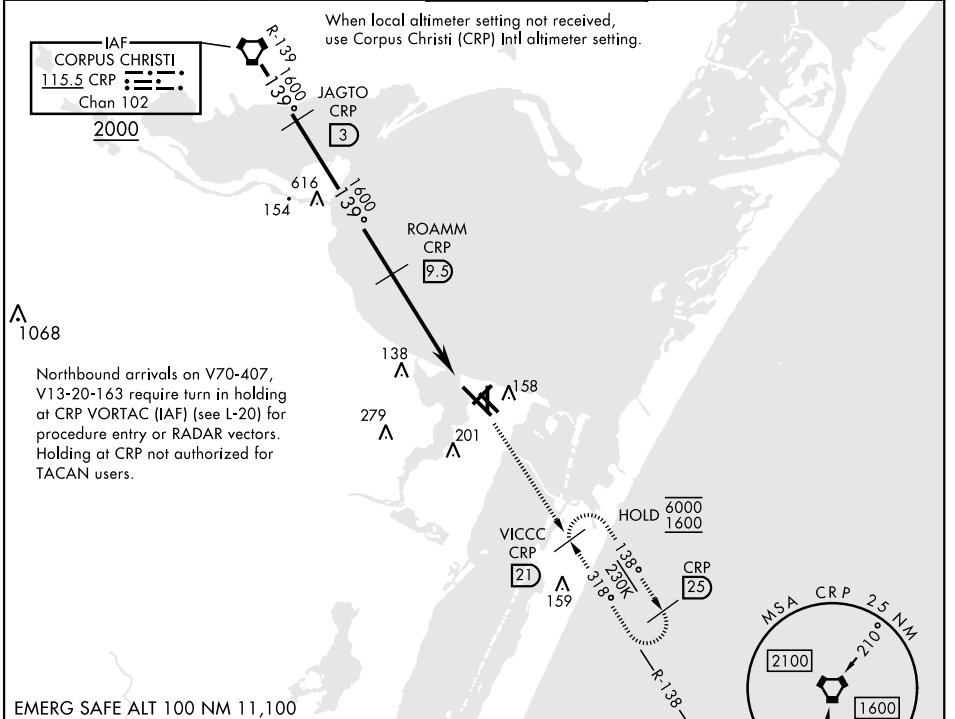
VORTAC CRP 115.5 Chan 102	APCH CRS 139°	Rwy Idg TDZE Arprt Elev 8001 13 18
---	-------------------------	--

▼ * When ALS inop, increase CAT AB vis to 1 mile, CAT CD vis to 1½ miles.
 ** When ALS inop, increase CAT AB vis to 1 mile, CAT CD vis to 1¾ miles.



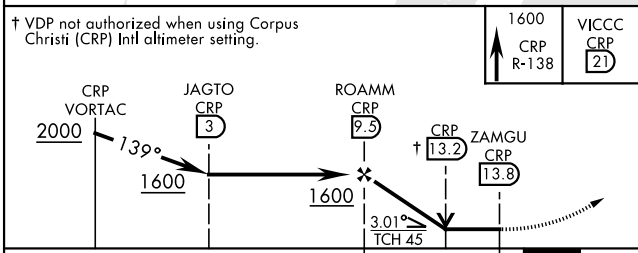
MISSED APPROACH: Climb to 1600 on CRP VORTAC R-138 to VICCC and hold.

ATIS * 127.9 290.9	APP CON 128.675 343.75	NAVY CORPUS TOWER * 134.85 340.2	GND CON 118.7 257.85	CLNC DEL 314.3	ASR/ PAR
------------------------------	----------------------------------	--	--------------------------------	--------------------------	-------------



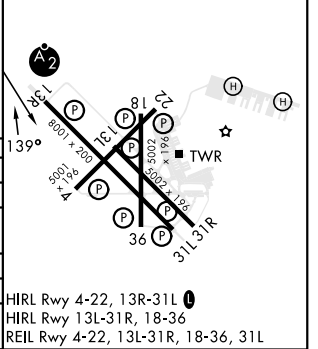
EMERG SAFE ALT 100 NM 11,100

† VDP not authorized when using Corpus Christi (CRP) Intl altimeter setting.



CATEGORY	A	B	C	D
S-13R *	420-¾ 407	(500-¾)	420-1 407	(500-1)
CIRCLING	460-1 442 (500-1)	480-1 462 (500-1)	520-1½ 502 (600-1½)	580-2 562 (600-2)
CORPUS CHRISTI (CRP) INTL ALTIMETER SETTING				
S-13R **	460-¾ 447	(500-¾)	460-1 447	(500-1)
CIRCLING	500-1 482 (500-1)		540-1½ 522 (600-1½)	620-2 602 (700-2)

ELEV	18	TDZE	13
------	----	------	----



CORPUS CHRISTI, TEXAS
 Amdt 2 30NOV23

27°42'N-97°17'W

CORPUS CHRISTI NAS (TRUAX FLD) (KNGP)

VOR/DME or TACAN Y RWY 13R

SC-3, 20 FEB 2025 to 20 MAR 2025

SC-3, 20 FEB 2025 to 20 MAR 2025