

CORPUS CHRISTI, TEXAS

# VOR/DME or TACAN Y RWY 31L

VORTAC CRP <b>115.5</b> Chan <b>102</b>	APCH CRS <b>318°</b>	Rwy Idg <b>8001</b> TDZE <b>17</b> Arprt Elev <b>18</b>
---	-------------------------	---

[USN]

CORPUS CHRISTI NAS (TRUAX FLD) (KNGP)

When local altimeter setting not received, use Corpus Christi (CRP) Intl altimeter setting. MISSED APPROACH: Climb to 600 hdg 318°, then climbing right turn to 1600 to intercept CRP VORTAC R-138 to VICCC and hold.

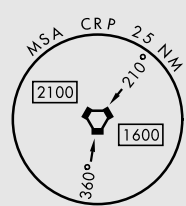
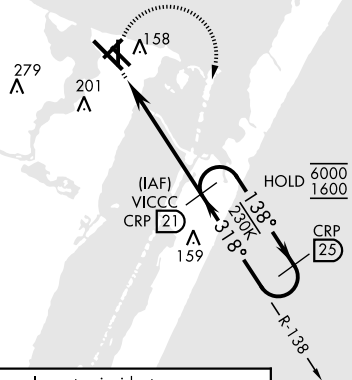
ATIS ★ <b>127.9 290.9</b>	APP CON <b>128.675 343.75</b>	NAVY CORPUS TOWER ★ <b>134.85 340.2</b>	GND CON <b>118.7 257.85</b>	CLNC DEL <b>314.3</b>	ASR/ PAR
------------------------------	----------------------------------	--	--------------------------------	--------------------------	-------------

CORPUS CHRISTI  
115.5 CRP  
Chan 102



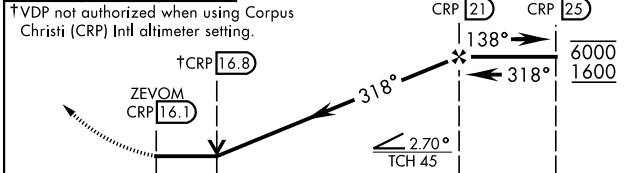
Northbound arrivals on V70-407 and V13-20-163 require turn in holding at CRP VORTAC (See L-20), or RADAR vectors. Holding at CRP not authorized for TACAN users.

▲ 1068



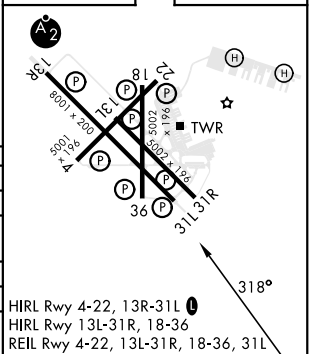
EMERG SAFE ALT 100 NM 11,100

600 hdg 318°	1600 CRP R-138	VICCC CRP 21	VGSI and descent angles not coincident. (VGSI Angle 3.00°)
--------------	----------------	--------------	--



CATEGORY	A	B	C	D
S-31L	420-1 403 (500-1)	420-1½ 403 (500-1½)		
CIRCLING	442 (500-1)	462 (500-1)	502 (600-1½)	562 (600-2)
CORPUS CHRISTI (CRP) INTL ALTIMETER SETTING				
S-31L	440-1 423 (500-1)	440-1¼ 423 (500-1¼)	540-1½ 620-2	
CIRCLING	500-1 482 (500-1)	522 (600-1½)	602 (700-2)	

ELEV 18	TDZE 17
---------	---------



CORPUS CHRISTI, TEXAS  
Amdt 2 30NOV23

27° 42' N-97° 17' W CORPUS CHRISTI NAS (TRUAX FLD) (KNGP)

# VOR/DME or TACAN Y RWY 31L

SC-3, 20 FEB 2025 to 20 MAR 2025

SC-3, 20 FEB 2025 to 20 MAR 2025