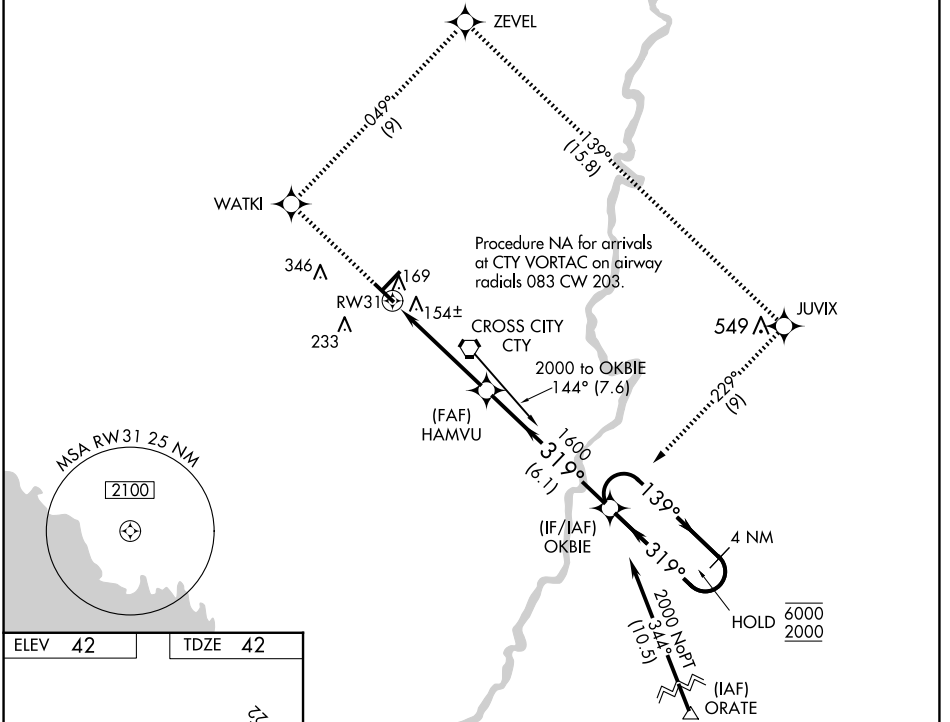


WAAS CH <b>45620</b> <b>W31A</b>	APP CRS <b>319°</b>	Rwy Idg TDZE Apt Elev	<b>5001</b> <b>42</b> <b>42</b>
--	------------------------	-----------------------------	---------------------------------------

# RNAV (GPS) RWY 31

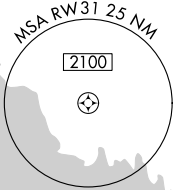
CROSS CITY (CTY)

RNP APCH.		MISSED APPROACH: Climb to 2000 direct WATKI and right turn on track 049° to ZEVEL and on track 139° to JUVIX and right turn on track 229° to OKBIE and hold.	
<p>Procedure NA at night. Rwy 31 helicopter visibility reduction below 1 SM NA. Baro-VNAV NA. Use Williston altimeter setting; when not received, use NA Gainesville altimeter setting and increase all DA 25 feet and all MDA 40 feet.</p>			
AWOS-3PT <b>120.775</b>	X60 AWOS-3T <b>118.425</b>	JACKSONVILLE CENTER <b>127.8 352.0</b>	UNICOM <b>122.8 (CTAF)</b>

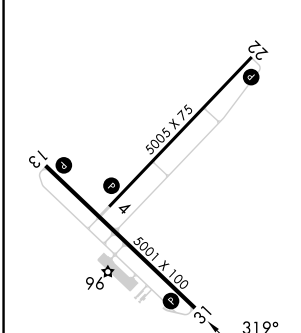


SE-3, 20 FEB 2025 to 20 MAR 2025

SE-3, 20 FEB 2025 to 20 MAR 2025



ELEV 42	TDZE 42
---------	---------



MIRL Rwy 13-31  
MIRL Rwy 4-22  
REIL Rwy 13 and 31

2000	WATKI	ZEVEL	JUVIX	OKBIE	4 NM Holding Pattern
↑	tr 049°	tr 139°	tr 229°		
VGSI and RNAV glidepath not coincident (VGSI Angle 3.00/TCH 36).					OKBIE
					139° → 6000 ← 319° 2000 GP 3.00° TCH 59
CATEGORY	A	B	C	D	
LPV DA	383-1¼		341 (400-1¼)		
LNVA/VNAV DA	546-1¾		504 (600-1¾)		
LNVA MDA	580-1	538 (600-1)	580-1½ 538 (600-1½)	580-1¾ 538 (600-1¾)	