

WAAS CH <b>72813</b> <b>W26A</b>	APP CRS <b>255°</b>	Rwy Idg TDZE Apt Elev	<b>6402</b> <b>1918</b> <b>1930</b>
----------------------------------------	------------------------	-----------------------------	-------------------------------------------

# RNAV (GPS) RWY 26

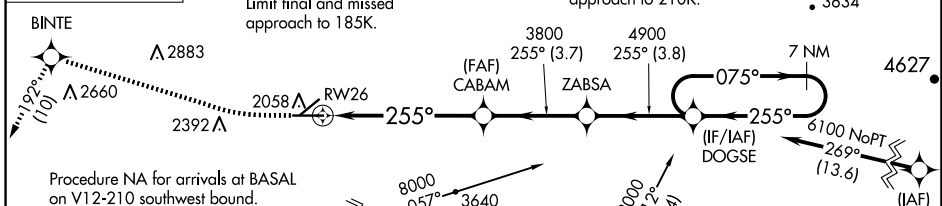
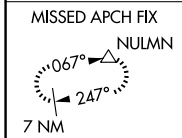
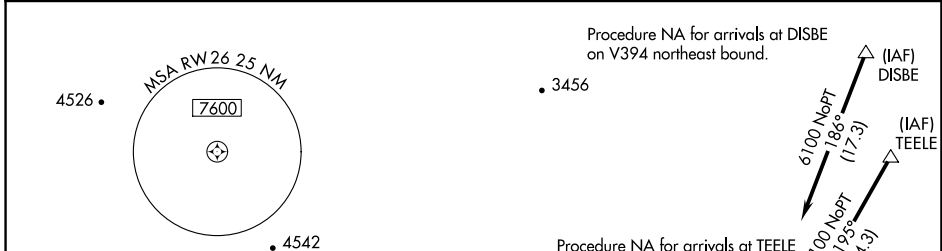
BARSTOW-DAGGETT (DAG)

**RNP APCH.**

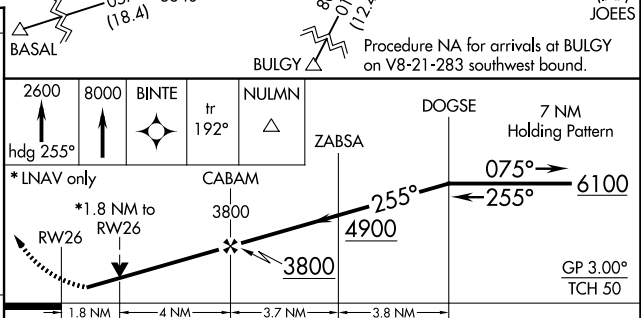
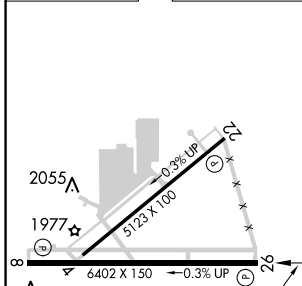
**⚠** For uncompensated Baro-VNAV systems, LNAV/VNAV NA below -4°C or above 54°C. Circling NA for Cat D south of Rwy 8-26. Rwy 26 helicopter visibility reduction below 3/4 SM NA.  
#Missed approach requires a minimum climb of 220 feet per NM to 8000.

**MISSED APPROACH:** Climb to 2600 on heading 255° then climb to 8000 direct BINTE and on track 192° to NULMN and hold, continue climb-in-hold to 8000.

ASOS <b>132.175</b>	LOS ANGELES CENTER <b>132.5 284.7</b>	UNICOM <b>123.0 (CTAF) 0</b>
------------------------	------------------------------------------	---------------------------------



ELEV 1930	TDZE 1918
-----------	-----------



CATEGORY	A	B	C	D
LPV DA#		2222-1	304 (300-1)	
LPV DA		2343-1 3/8	425 (500-1 3/8)	
LNAV/VNAV DA		2389-1 5/8	471 (500-1 5/8)	
LNAV MDA	2540-1	622 (700-1)	2540-1 3/4	622 (700-1 3/4)
<b>C</b> CIRCLING	2640-1 710 (800-1)	2860-1 1/4 930 (1000-1 1/4)	3500-3	1570 (1600-3)

SW-3, 20 FEB 2025 to 20 MAR 2025

SW-3, 20 FEB 2025 to 20 MAR 2025