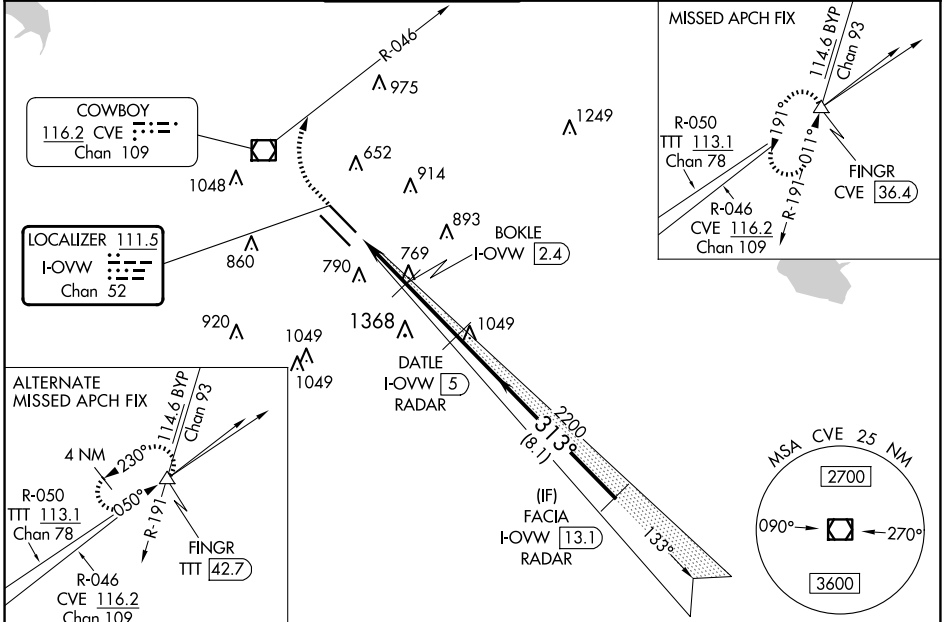


LOC/DME I-OVW <b>111.5</b> Chan 52	APP CRS <b>313°</b>	Rwy Idg TDZE Apt Elev <b>6952</b> <b>487</b> <b>487</b>
--	------------------------	--

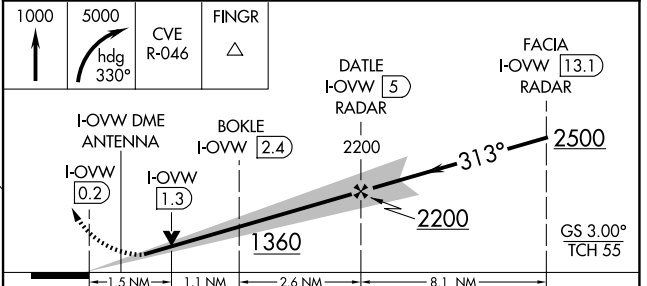
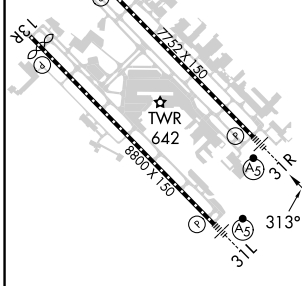
# ILS or LOC RWY 31R

DALLAS LOVE FLD (DAL)

DME required. RADAR required for procedure entry.		MALSR 	MISSED APPROACH: Climb to 1000 then climbing right turn to 5000 on heading 330° and CVE VOR/DME R-046 to FINGR INT/CVE 36.4 DME and hold.		
⚠ Simultaneous approach authorized. ** RVR 1800 authorized with use of FD or AP or HUD to DA.					
D-ATIS <b>120.15</b>	LONE STAR APP CON NORTH <b>124.3 282.275</b> SOUTH <b>125.2 343.65</b>	LOVE TOWER <b>123.7 239.3</b>	GND CON <b>121.75 348.6</b>	CLNC DEL <b>127.9</b>	CPDLC



ELEV <b>487</b>	<b>D</b>	TDZE <b>487</b>
-----------------	----------	-----------------



TDZ/CL Rwy 13L and 31L		HRL Rwy 13L-31R and 13R-31L	
FAF to MAP 5.2 NM			
Knots	60	90	120 150 180
Min:Sec	5:12	3:28	2:36 2:05 1:44
<input checked="" type="checkbox"/> CIRCLING	1020-1 533 (600-1)	533 (600-1/2)	1020/55 533 (600-1)
	1020-2 733 (800-2)	1140-1 653 (700-1)	1520-3 1033 (1100-3)

SC-2, 20 FEB 2025 to 20 MAR 2025

SC-2, 20 FEB 2025 to 20 MAR 2025