

# REDDN FOUR ARRIVAL (RNAV)

SC-2, 20 FEB 2025 to 20 MAR 2025

LONE STAR APP CON  
 125.27 308.4  
 125.025 263.025  
 D-ATIS  
 120.15

NOTE: RADAR required.

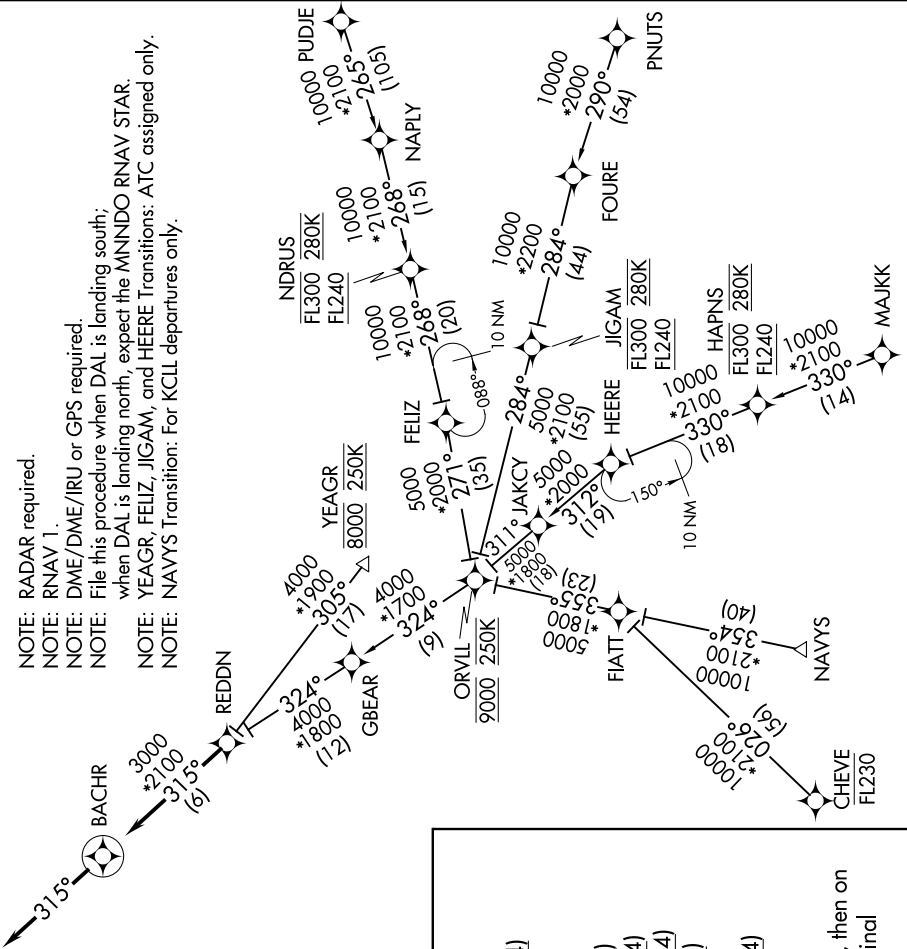
NOTE: RNAV 1.

NOTE: DME/DME/IRU or GPS required.

NOTE: File this procedure when DAL is landing south; when DAL is landing north, expect the **MINDO RNAV STAR**.

NOTE: YEAGR, FELIZ, JIGAM, and HEERE Transitions: ATC assigned only.

NOTE: NAVYS Transition: For KCLL departures only.



NOTE: Chart not to scale.

### ARRIVAL ROUTE DESCRIPTION

- CHEVE TRANSITION (CHEVE.REDDN4)
- FELIZ TRANSITION (FELIZ.REDDN4)
- HEERE TRANSITION (HEERE.REDDN4)
- JIGAM TRANSITION (JIGAM.REDDN4)
- MAJJK TRANSITION (MAJJK.REDDN4)
- NAVYS TRANSITION (NAVYS.REDDN4)
- PNUTS TRANSITION (PNUTS.REDDN4)
- PUDJIE TRANSITION (PUDJIE.REDDN4)
- YEAGR TRANSITION (YEAGR.REDDN4)

From REDDN on track 31.5° to BACHR, then on track 31.5°. Expect RADAR vectors to find approach course.

SC-2, 20 FEB 2025 to 20 MAR 2025

# REDDN FOUR ARRIVAL (RNAV)