

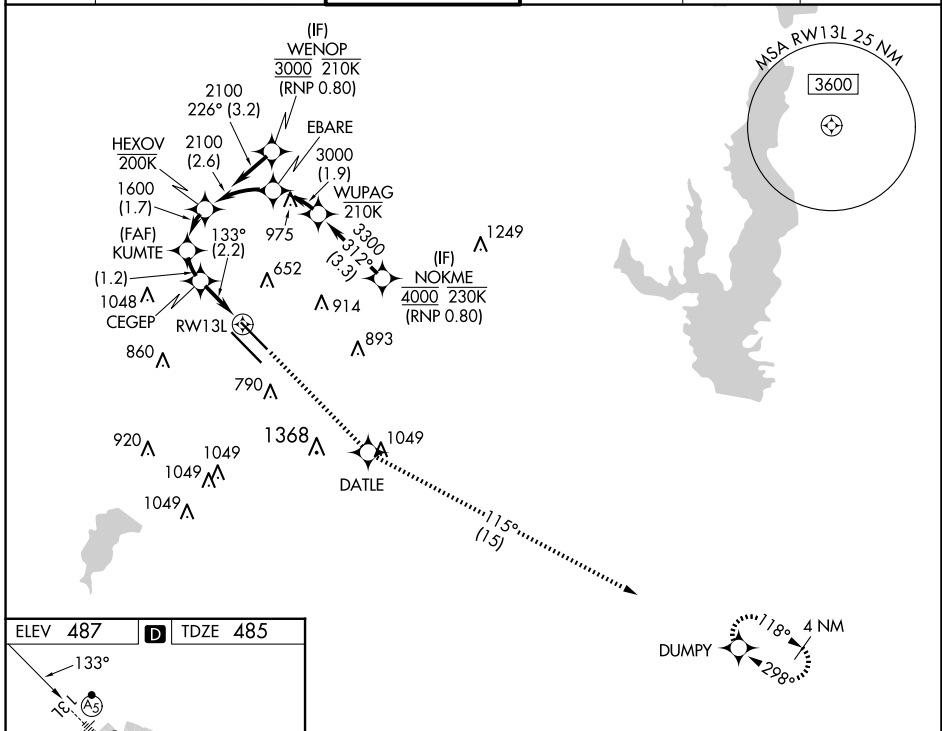
APP CRS	Rwy Idg	<b>7352</b>
	TDZE	<b>485</b>
<b>133°</b>	Apt Elev	<b>487</b>

# RNAV (RNP) W RWY 13L

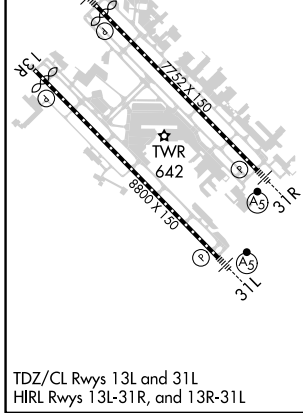
DALLAS LOVE FLD (DAL)

RNP AR APCH. RF required.		MALSR	MISSED APPROACH: Climb to 3000 direct DATLE and on track 115° to DUMPY and hold.
▼ Simultaneous approach authorized. For uncompensated Baro-VNAV systems, procedure NA below -6°C or above 54°C. For inop ALS, increase RNP 0.11 all Cats visibility to RVR 4500.			

D-ATIS	LONE STAR APP CON	LOVE TOWER	GND CON	CLNC DEL	CPDLC
<b>120.15</b>	NORTH <b>124.3 282.275</b> SOUTH <b>125.2 343.65</b>	<b>123.7 239.3</b>	<b>121.75 348.6</b>	<b>127.9</b>	



ELEV	<b>487</b>	<b>D</b>	TDZE	<b>485</b>
------	------------	----------	------	------------



See planview for multiple IF locations.				3000	DATLE	tr 115°	DUMPY
HEXOV	KUMTE	CEGEP	RW13L				
2100	1600	1212					
GP 3.00°	1600	133°					
TCH 40	1.7 NM	1.2 NM	2.2 NM				
CATEGORY	A	B	C	D			
RNP 0.11 DA	754/24			269 (300-½)			
RNP 0.30 DA	846/40			361 (400-¾)			
<b>AUTHORIZATION REQUIRED</b>							

TDZ/CL Rwy 13L and 31L  
HIRL Rwy 13L-31R, and 13R-31L

32°51'N-96°51'W

DALLAS LOVE FLD (DAL)

# RNAV (RNP) W RWY 13L

SC-2, 20 FEB 2025 to 20 MAR 2025

SC-2, 20 FEB 2025 to 20 MAR 2025