

| | | |
|-------------|----------|-------------|
| APP CRS | Rwy Idg | 8310 |
| 133° | TDZE | 478 |
| | Apt Elev | 487 |

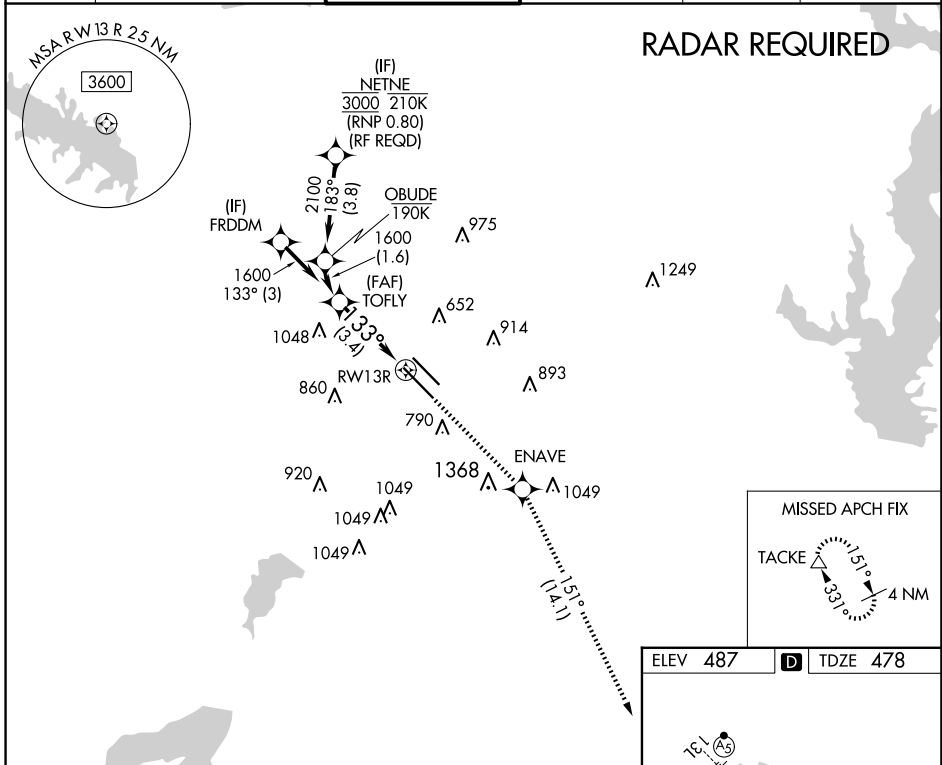
RNAV (RNP) X RWY 13R

DALLAS LOVE FLD (DAL)

▼ For uncompensated Baro-VNAV systems, procedure NA below -5°C (23°F) or above 54°C (130°F). Simultaneous approach authorized. GPS required. Use of FD or AP providing RNAV track guidance required during simultaneous operations.

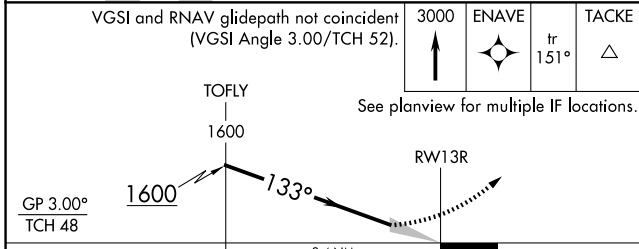
MISSED APPROACH: Climb to 3000 direct ENAVE and on track 151° to TACKE and hold.

| | | | | | |
|---------------|---------------------------------------------------------|--------------------|---------------------|--------------|-------|
| D-ATIS | LONE STAR APP CON | LOVE TOWER | GND CON | CLNC DEL | CPDLC |
| 120.15 | NORTH 124.3 282.275 SOUTH 125.2 343.65 | 123.7 239.3 | 121.75 348.6 | 127.9 | |

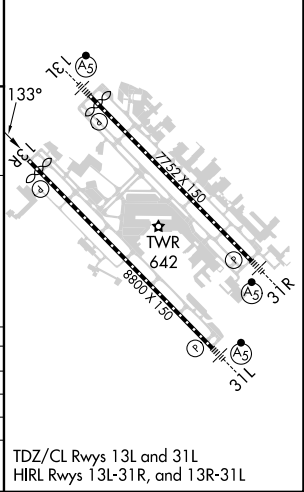


SC-2, 20 FEB 2025 to 20 MAR 2025

SC-2, 20 FEB 2025 to 20 MAR 2025



| | |
|----------|-------------------|
| ELEV 487 | D TDZE 478 |
|----------|-------------------|



| CATEGORY | A | B | C | D |
|-------------|---|--------|--------------|---|
| RNP 0.20 DA | | 781/50 | 303 (300-1) | |
| RNP 0.25 DA | | 833/60 | 355 (400-1½) | |
| RNP 0.30 DA | | 929-1½ | 451 (500-1½) | |

AUTHORIZATION REQUIRED

TDZ/CL Rwy 13L and 31L
HIRL Rwy 13L-31R, and 13R-31L