

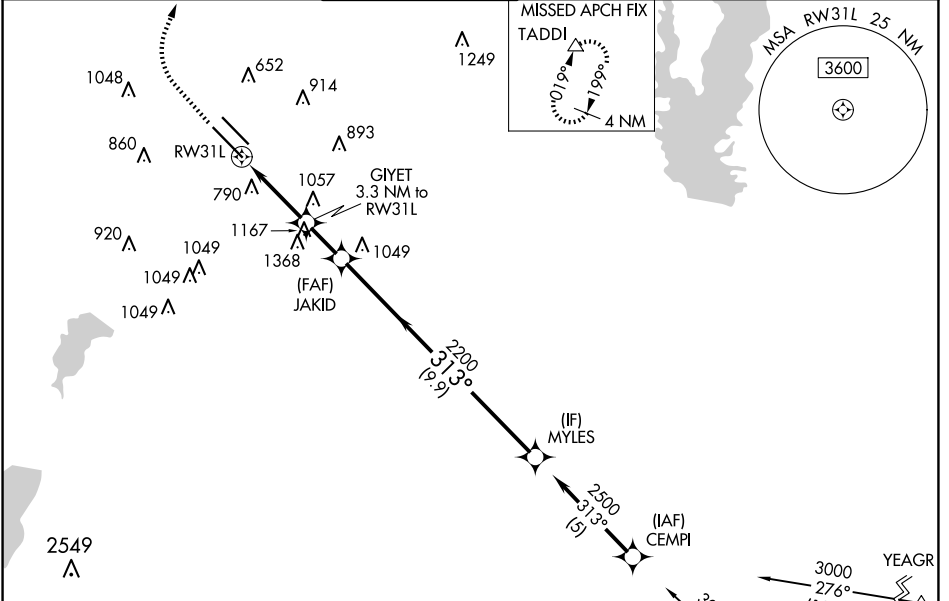
WAAS CH <b>72808</b> <b>W31A</b>	APP CRS <b>313°</b>	Rwy Idg TDZE <b>477</b> Apt Elev <b>487</b>
--	------------------------	---

# RNAV (GPS) Y RWY 31L

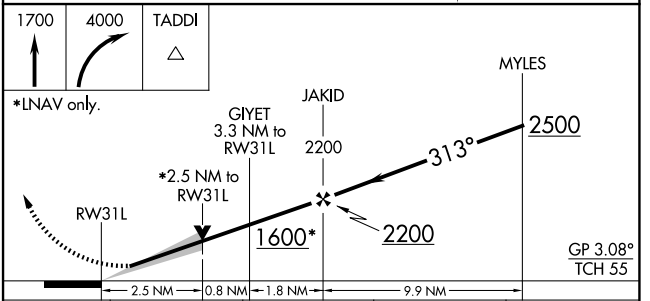
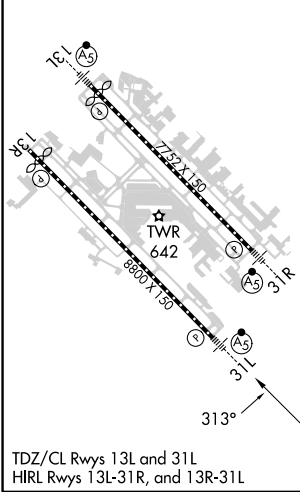
DALLAS LOVE FLD (DAL)

RNP APCH. Simultaneous approach authorized. Use of FD or AP providing RNAV track guidance required during simultaneous operations. LNAV procedure NA during simultaneous operations. For inop ALS, increase LPV all Cats visibility to RVR 4500.	MALSR 	MISSED APPROACH: Climb to 1700 then climbing right turn to 4000 direct TADDI and hold.
---	-----------	--

D-ATIS <b>120.15</b>	LONE STAR APP CON NORTH <b>124.3 282.275</b> SOUTH <b>125.2 343.65</b>	LOVE TOWER <b>123.7 239.3</b>	GND CON <b>121.75 348.6</b>	CLNC DEL <b>127.9</b>	CPDLC
-------------------------	--	----------------------------------	--------------------------------	--------------------------	-------



ELEV 487	<b>D</b>	TDZE 477
----------	----------	----------



CATEGORY	A	B	C	D
LPV DA		770/22	293 (300-½)	
LNAV MDA	1360/40	883 (900-¾)	1360-2	883 (900-2)
<b>C</b> CIRCLING	1360-1¼	873 (900-1¼)	1360-2½ 873 (900-2½)	1520-3 1033 (1100-3)

SC-2, 20 FEB 2025 to 20 MAR 2025

SC-2, 20 FEB 2025 to 20 MAR 2025