

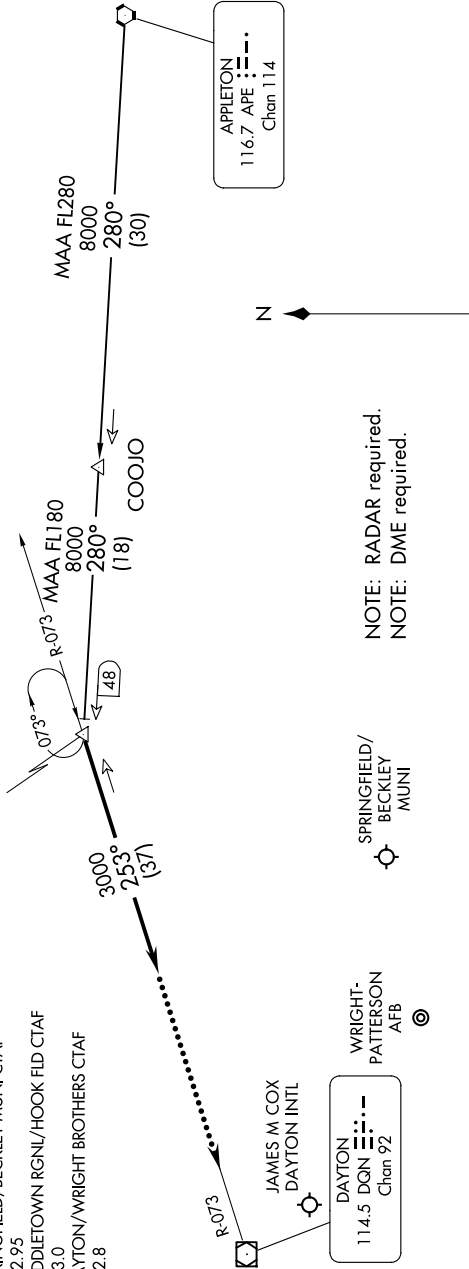
DANEI THREE ARRIVAL

EC-2, 20 FEB 2025 to 20 MAR 2025

COLUMBUS APP CON
134.45 323.15
DAY ATIS
125.8
KFFO ATIS
124.475 269.9
SPRINGFIELD/BECKLEY MUNI CTAF
122.95
MIDDLETOWN RGNL/HOOK FLD CTAF
123.0
DAYTON/WRIGHT BROTHERS CTAF
122.8

DANEI VERTICAL NAVIGATION PLANNING

Expect 11000 250K



NOTE: RADAR required.
NOTE: DME required.

SPRINGFIELD/
BECKLEY
MUNI

WRIGHT-
PATTERSON
AFB

DAYTON/
WRIGHT BROTHERS

MIDDLETOWN RGNL/
HOOK FLD

APPLETON TRANSITION (APE:DANEI3): From over APE VORTAC on APE R-280 to DANEI. Thence....

....From over DANEI on heading 253°. Expect RADAR vectors to final approach course.

LOST COMMUNICATIONS:

In the event of lost communications: At DANEI, proceed direct DQN VOR/DME maintain 3000' until DQN VOR/DME.

NOTE: Chart not to scale.

DANEI THREE ARRIVAL

EC-2, 20 FEB 2025 to 20 MAR 2025