

LOC I-ATD <b>108.9</b>	APP CRS <b>061°</b>	Rwy Idg <b>10900</b> TDZE <b>998</b> Apt Elev <b>1009</b>
---------------------------	------------------------	---

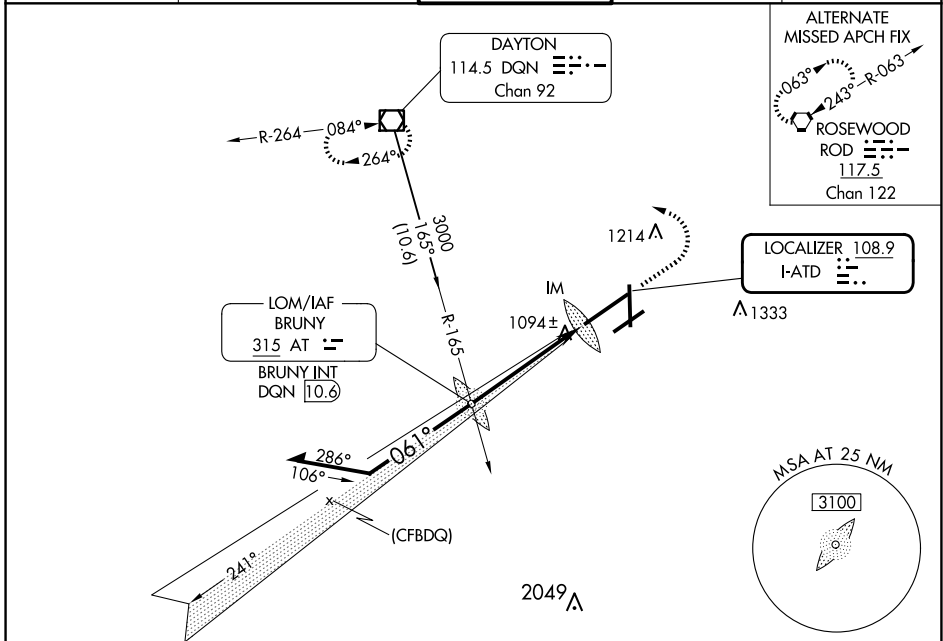
# ILS RWY 6L (CAT II & III)

## JAMES M COX DAYTON INTL (DAY)

**Simultaneous approach authorized.**  
**CAT II: RVR 1000 authorized with specific OPSPEC, MSPEC, or LOA approval and use of autoland or HUD to touchdown.**

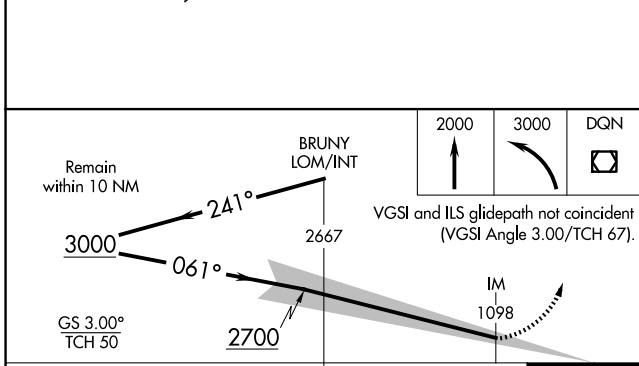
**MISSED APPROACH: Climb to 2000 then climbing left turn to 3000 direct DQN VOR/DME and hold.**

ATIS <b>125.8</b>	COLUMBUS APP CON <b>134.45 323.15</b>	DAYTON TOWER <b>119.9 257.7</b>	GND CON <b>121.9</b>	CINC DEL <b>121.75</b>
----------------------	--	------------------------------------	-------------------------	---------------------------



EC-2, 20 FEB 2025 to 20 MAR 2025

EC-2, 20 FEB 2025 to 20 MAR 2025



CATEGORY	A	B	C	D
S-ILS 6L	CAT II RA 99/12		100 DA 1098	
S-ILS 6L	CAT III		RVR 06	

ELEV 1009	<b>D</b>	TDZE 998
-----------	----------	----------

The detailed diagram shows the airport layout including:
 

- Runway 6L** (ILS) and **Runway 36**.
- Runway 8L** with **AS** (Approach Lights).
- TWR 1260** (Tower).
- 736 X 150** and **820 X 150** taxiways.
- 10901 X 150** taxiway.
- 36** (Runway 36) with **P** (Precision) and **R** (Runway) markings.

### CATEGORY II & III ILS - SPECIAL AIRCREW & AIRCRAFT CERTIFICATION REQUIRED

HIRL all Rwys  
 TDZ/CL Rwy 6L  
 REIL Rwys 6R and 36