

LOC I-DAY <b>108.3</b>	APP CRS <b>185°</b>	Rwy Idg <b>8502</b>
		TDZE <b>996</b>
		Apt Elev <b>1009</b>

# ILS or LOC RWY 18

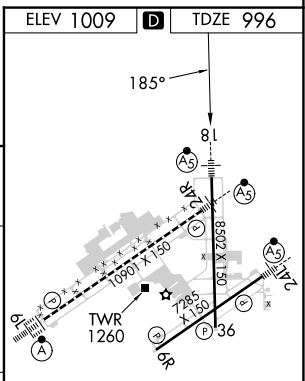
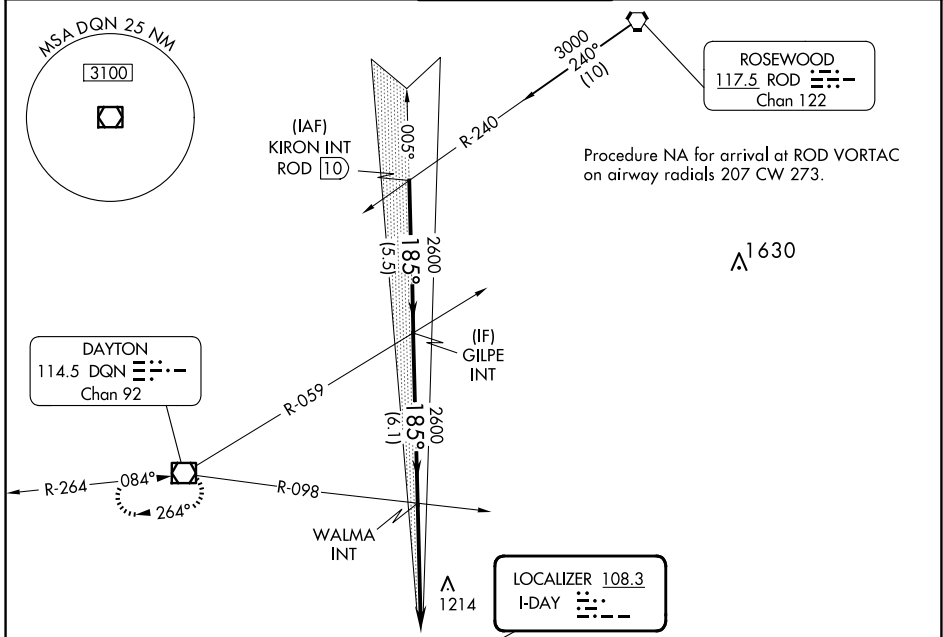
JAMES M COX DAYTON INTL (DAY)

**▼** For inop ALS, increase S-LOC 18 Cat C/D visibility to RVR 6000.  
 \*\* RVR 1800 authorized with use of FD or AP or HUD to DA.

**MALSR**

**MISSED APPROACH:** Climb to 1400 then climbing right turn to 3100 direct DQN VOR/DME and hold.

ATIS <b>125.8</b>	COLUMBUS APP CON <b>134.45 323.15</b>	DAYTON TOWER <b>119.9 257.7</b>	GND CON <b>121.9</b>	CINC DEL <b>121.75</b>
----------------------	--	------------------------------------	-------------------------	---------------------------



	KIRON INT ROD 10		GILPE INT		WALMA INT		1400	3100	DQN
	3000		2600		2600		↑	↷	
	GS 3.00° TCH 55								
	5.5 NM		6.1 NM		4.9 NM				
CATEGORY	A	B	C	D					
S-ILS 18 **	1196/24		200 (200-½)						
S-LOC 18	1400/24	404 (400-½)	1400/40	404 (400-¾)					
<b>C</b> CIRCLING	1580-1	571 (600-1)	1580-1½	631 (700-2)					
			571 (600-1½)						

HIRL all Rwys  
 TDZ/CL Rwy 6L  
 REIL Rwys 6R and 36

FAF to MAP 4.9 NM

Knots	60	90	120	150	180
Min:Sec	4:54	3:16	2:27	1:58	1:38

EC-2, 20 FEB 2025 to 20 MAR 2025

EC-2, 20 FEB 2025 to 20 MAR 2025