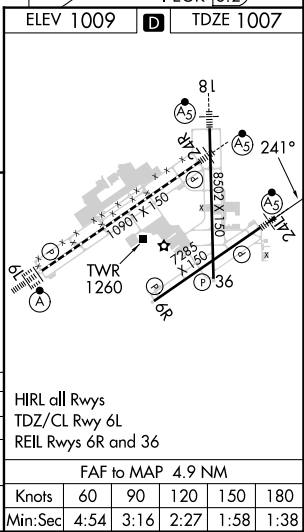
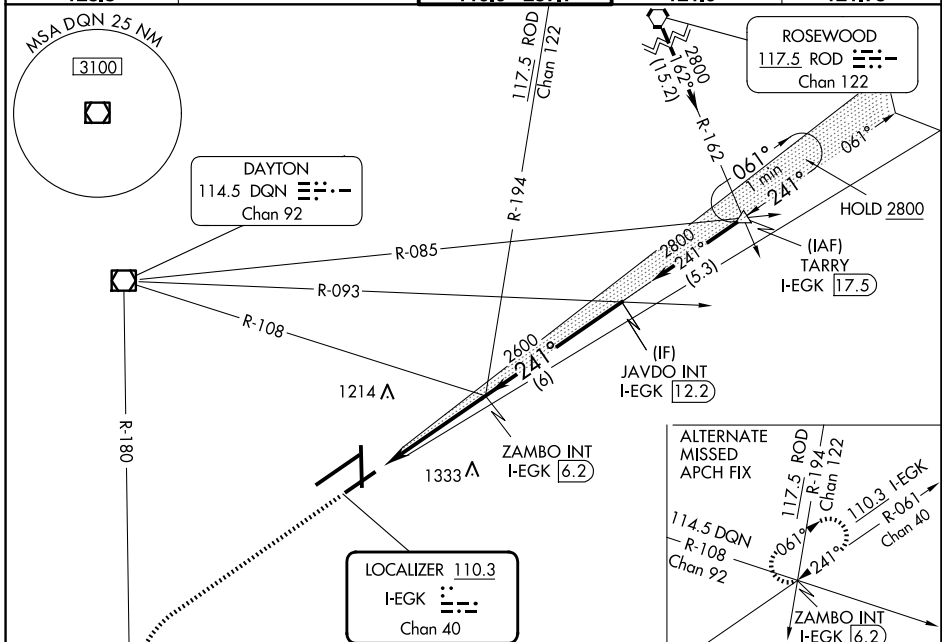


LOC I-EGK <b>110.3</b> Chan 40	APP CRS <b>241°</b>	Rwy ldg TDZE Apt Elev <b>7001</b> <b>1007</b> <b>1009</b>
--------------------------------------	------------------------	--

# ILS or LOC RWY 24L

JAMES M COX DAYTON INTL (DAY)

DME required.		MALSR	MISSED APPROACH: Climb to 3000 on heading 241° and DQN R-180 to MIMMS/DQN 18 DME and hold.	
Simultaneous approach authorized. # RVR 1800 authorized with use of FD or AP or HUD to DA.				
ATIS <b>125.8</b>	COLUMBUS APP CON <b>134.45 323.15</b>	DAYTON TOWER <b>119.9 257.7</b>	GND CON <b>121.9</b>	CLNC DEL <b>121.75</b>



EC-2, 20 FEB 2025 to 20 MAR 2025

EC-2, 20 FEB 2025 to 20 MAR 2025