

LOC I-ATD <b>108.9</b>	APP CRS <b>061°</b>	Rwy Idg <b>10900</b>
		TDZE <b>998</b>
		Apt Elev <b>1009</b>

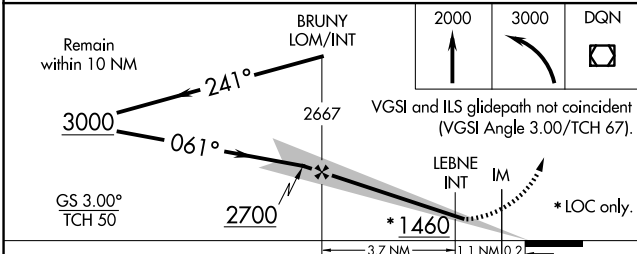
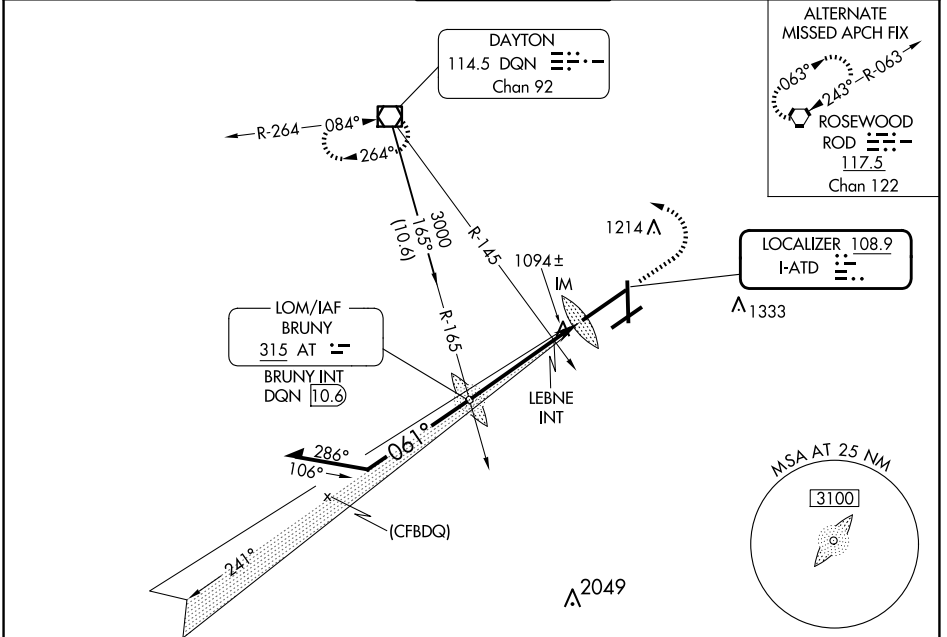
# ILS or LOC RWY 6L

JAMES M COX DAYTON INTL (DAY)

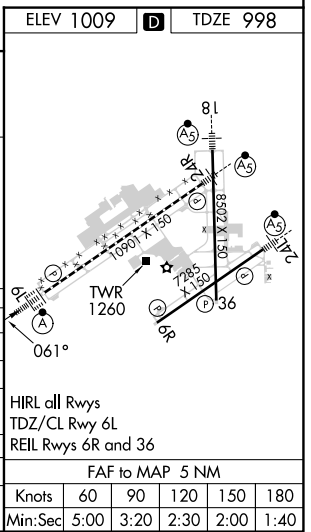
**Simultaneous approach authorized.**  
 For inop ALSF-2, increase S-LOC 6L Cat C/D visibility to 1½ mile.

**ALSF-2**  
**MISSED APPROACH:** Climb to 2000 then climbing left turn to 3000 direct DQN VOR/DME and hold.

ATIS <b>125.8</b>	COLUMBUS APP CON <b>134.45 323.15</b>	DAYTON TOWER <b>119.9 257.7</b>	GND CON <b>121.9</b>	CINC DEL <b>121.75</b>
----------------------	--	------------------------------------	-------------------------	---------------------------



CATEGORY	ELEV 1009 TDZE 998			
	A	B	C	D
S-ILS 6L	1198/18 200 (200-½)			
S-LOC 6L	1460/24	462 (500-½)	1460/50	462 (500-1)
<b>C</b> CIRCLING	1580-1	571 (600-1)	1580-1½	1640-2
			571 (600-1½)	631 (700-2)
LEBNE FIX MINIMUMS (DUAL VOR RECEIVERS REQUIRED)				
S-LOC 6L	1380/24	382 (400-½)	1380/35	382 (400-¾)
<b>C</b> CIRCLING	1580-1	571 (600-1)	1580-1½	1640-2
			571 (600-1½)	631 (700-2)



EC-2, 20 FEB 2025 to 20 MAR 2025

EC-2, 20 FEB 2025 to 20 MAR 2025