

| | | | |
|--|------------------------|-----------------------------|---|
| WAAS CH 50414 W24A | APP CRS 241° | Rwy Idg TDZE Apt Elev | 7001 1007 1009 |
|--|------------------------|-----------------------------|---|

RNAV (GPS) RWY 24L

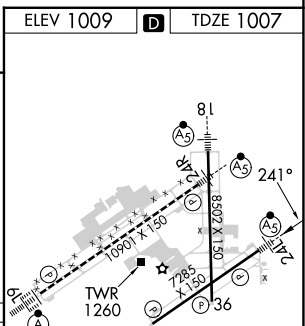
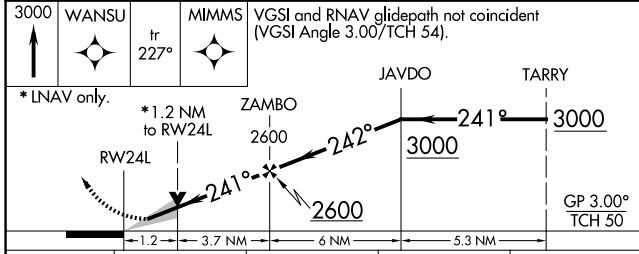
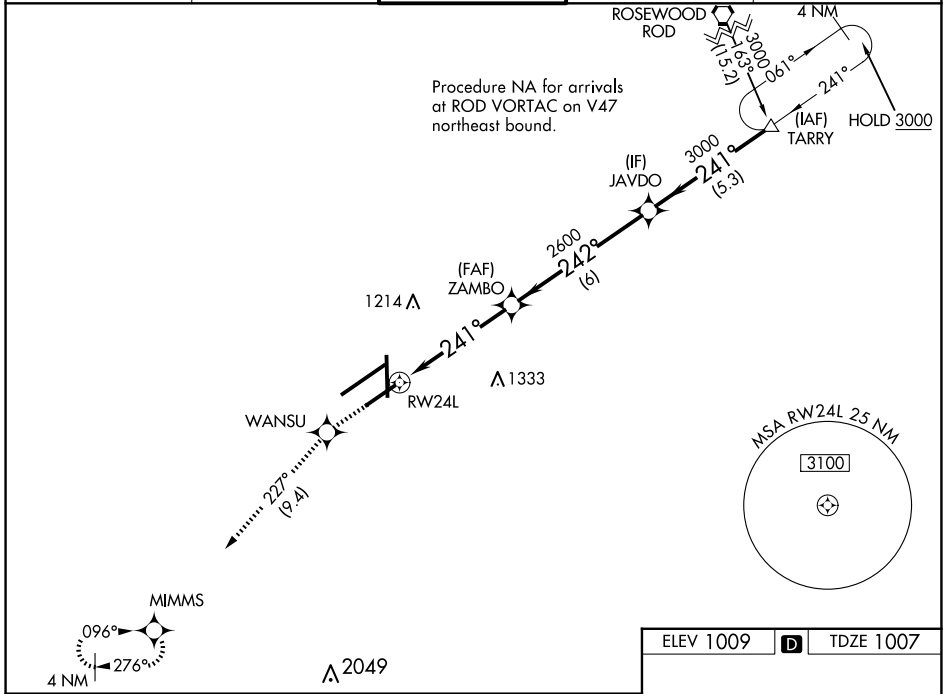
JAMES M COX DAYTON INTL (DAY)

RNP APCH.

Simultaneous approach authorized. LNAV procedure NA during simultaneous operations. For uncompensated Baro-VNAV systems, LNAV/VNAV NA below -19°C or above 54°C. Use of FD or AP required during simultaneous operations. For inop ALS, increase LNAV/VNAV all Cats RVR to 4300. **RVR 1800 authorized with use of FD or AP or HUD to DA.

MALSRS MISSED APPROACH:
Climb to 3000 direct WANSU and on track 227° to MIMMS and hold.

| | | | | |
|----------------------|--|------------------------------------|-------------------------|---------------------------|
| ATIS 125.8 | COLUMBUS APP CON 134.45 323.15 | DAYTON TOWER 119.9 257.7 | GND CON 121.9 | CLNC DEL 121.75 |
|----------------------|--|------------------------------------|-------------------------|---------------------------|



| CATEGORY | A | B | C | D |
|--------------|---------------------|---|---|---|
| LPV DA** | 1207/24 | | 200 (200-½) | |
| LNAV/VNAV DA | 1327/24 | | 320 (400-½) | |
| LNAV MDA | 1440/24 433 (500-½) | | 1440/40 433 (500-¾) | |
| CIRCLING | 1580-1 571 (600-1) | | 1580-1½ 571 (600-1½) 1640-2 631 (700-2) | |

HIRL all Rwys
TDZ/CL Rwy 6L
REIL Rwys 6R and 36

EC-2, 20 FEB 2025 to 20 MAR 2025

EC-2, 20 FEB 2025 to 20 MAR 2025