

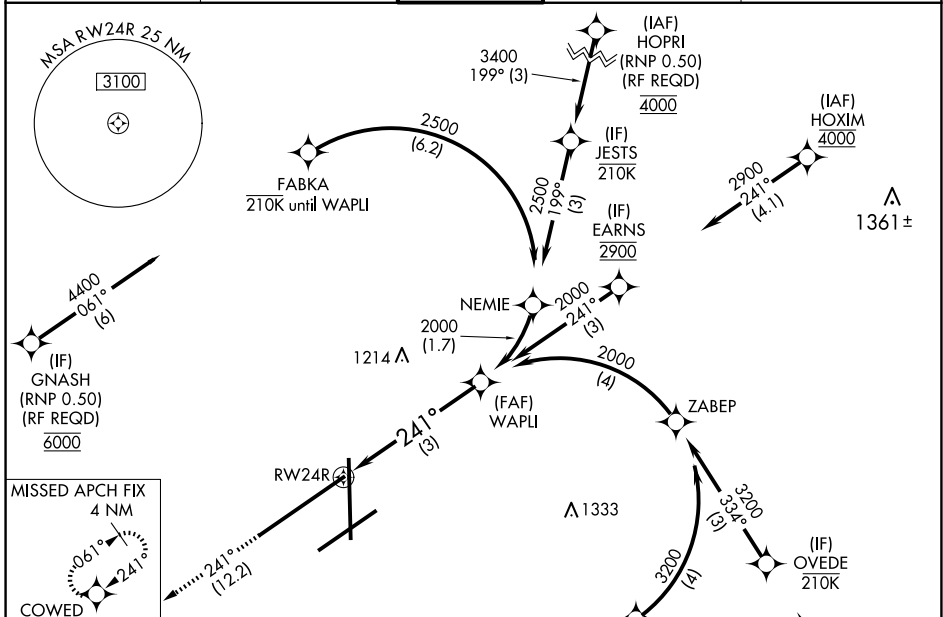
APP CRS	Rwy Idg	10900
241°	TDZE	997
	Apf Elev	1009

RNAV (RNP) Y RWY 24R

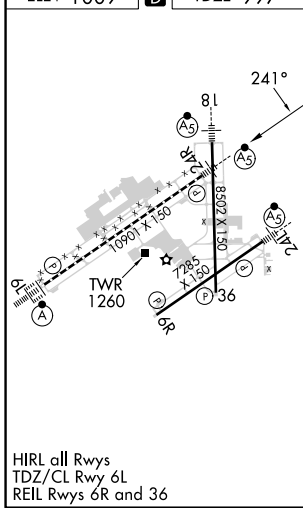
JAMES M COX DAYTON INTL (DAY)

RNP AR APCH.	MALSR	MISSED APPROACH: Climb to 3000 on track 241° COWED and hold.
<p>For inop ALS, increase RNP 0.10 all Cats visibility to RVR 5500 and RNP 0.30 all Cats visibility to 1 3/8 SM. For uncompensated Baro-VNAV systems, procedure NA below -19°C or above 54°C.</p>		

ATIS 125.8	COLUMBUS APP CON 134.45 323.15	DAYTON TOWER 119.9 257.7	GND CON 121.9	CLNC DEL 121.75
----------------------	--	------------------------------------	-------------------------	---------------------------



ELEV 1009	D	TDZE 997
-----------	----------	----------



3000	↑	tr	241°	COWED	See planview for multiple IF locations.	WAPLI	2000
							2000
							GP 3.00°
							TCH 55

CATEGORY	A	B	C	D
RNP 0.10 DA		1334/35	337 (400-5%)	
RNP 0.30 DA		1418/50	421 (500-1)	

AUTHORIZATION REQUIRED