

APP CRS	Rwy Idg	10900
061°	TDZE	998
	Apt Elev	1009

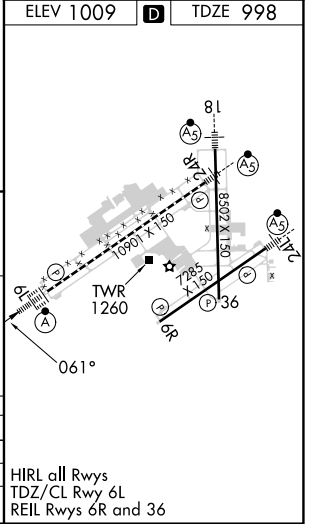
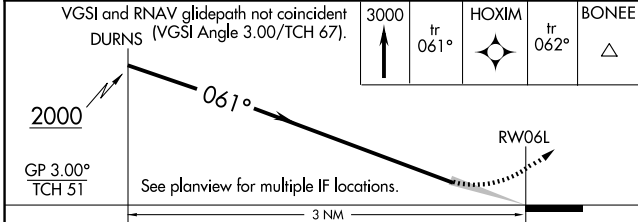
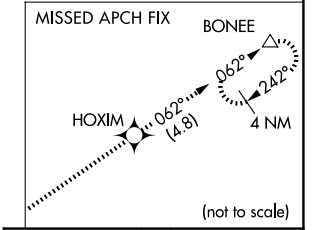
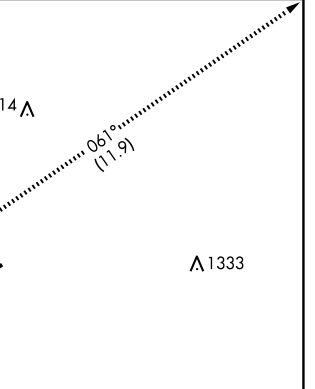
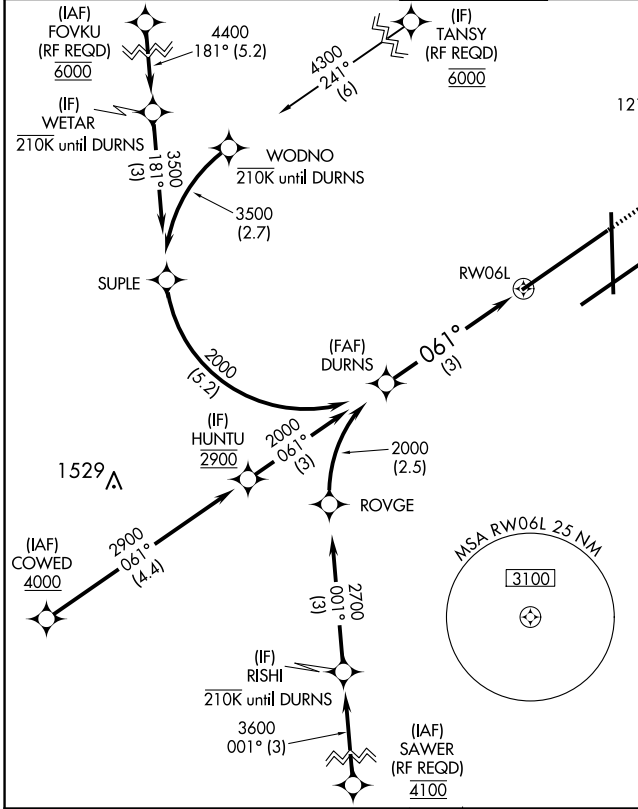
RNAV (RNP) Y RWY 6L

JAMES M COX DAYTON INTL (DAY)

▼ GPS required. For uncompensated Baro-VNAV systems, procedure NA below -19°C (-2°F) or above 54°C (130°F). For inop ALS, increase RNP 0.10 all Cats visibility to RVR 6000. For inop ALS, increase RNP 0.30 all Cats visibility to 1 ½.

ALSF-2 MISSED APPROACH: Climb to 3000 on the RNAV missed approach route to BONEE and hold.

ATIS 125.8	COLUMBUS APP CON 134.45 323.15	DAYTON TOWER 119.9 257.7	GND CON 121.9	CINC DEL 121.75
----------------------	--	------------------------------------	-------------------------	---------------------------



CATEGORY	A	B	C	D
RNP 0.10 DA		1358/40	360 (400-¾)	
RNP 0.30 DA		1464/60	466 (500-1½)	

AUTHORIZATION REQUIRED

HIRL all Rwys
 TDZ/CL Rwy 6L
 REIL Rwy 6R and 36

EC-2, 20 FEB 2025 to 20 MAR 2025

EC-2, 20 FEB 2025 to 20 MAR 2025