

WAAS CH <b>42913</b> <b>W06A</b>	APP CRS <b>061°</b>	Rwy Idg <b>10900</b> TDZE <b>998</b> Apt Elev <b>1009</b>
--	------------------------	---

# RNAV (GPS) Z RWY 6L

JAMES M COX DAYTON INTL (DAY)

RNP APCH.

Simultaneous approach authorized. LNAV procedure NA during simultaneous operations. For uncompensated Baro-VNAV systems, LNAV/VNAV NA below -19°C or above 54°C. Use of FD or AP required during simultaneous operations. For inop ALS, increase LNAV/VNAV all Cats visibility to RVR 5500 and LNAV Cats C/D to 1¼ SM.

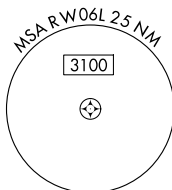
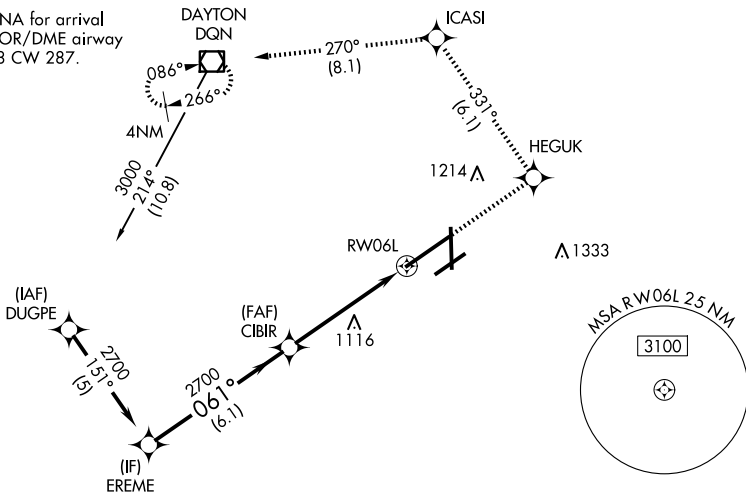
ALSf-2



MISSED APPROACH: Climb to 3000 direct HEGUK and on track 331° to ICASI and on track 270° to DQN VOR/DME and hold.

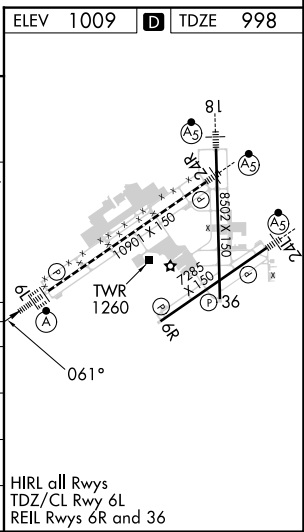
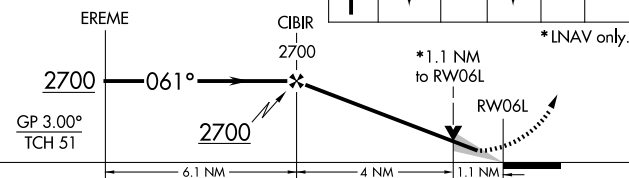
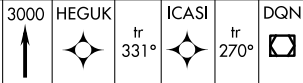
ATIS <b>125.8</b>	COLUMBUS APP CON <b>134.45 323.15</b>	DAYTON TOWER <b>119.9 257.7</b>	GND CON <b>121.9</b>	CLNC DEL <b>121.75</b>
----------------------	--	------------------------------------	-------------------------	---------------------------

Procedure NA for arrival on DQN VOR/DME airway radials 208 CW 287.



▲ 2049

VGSI and RNAV glidepath not coincident (VGSI Angle 3.00/TCH 51).



CATEGORY	A	B	C	D
LPV DA		1198/18	200 (200-½)	
LNAV/VNAV DA		1366/40	368 (400-¾)	
LNAV MDA	1420/24	422 (500-½)	1420/40 422 (500-¾)	1420/50 422 (500-1)
<b>C</b> CIRCLING	1580-1	571 (600-1)	1580-1½ 571 (600-1½)	1640-2 631 (700-2)

HIRL all Rwys  
TDZ/CL Rwy 6L  
REIL Rwys 6R and 36

EC-2, 20 FEB 2025 to 20 MAR 2025

EC-2, 20 FEB 2025 to 20 MAR 2025