

DAYTON, OHIO

RNAV (GPS) RWY 5L

APCH CRS	Rwy Idg	12,600
053°	TDZE	803
	Arprt Elev	823

- (USAF)

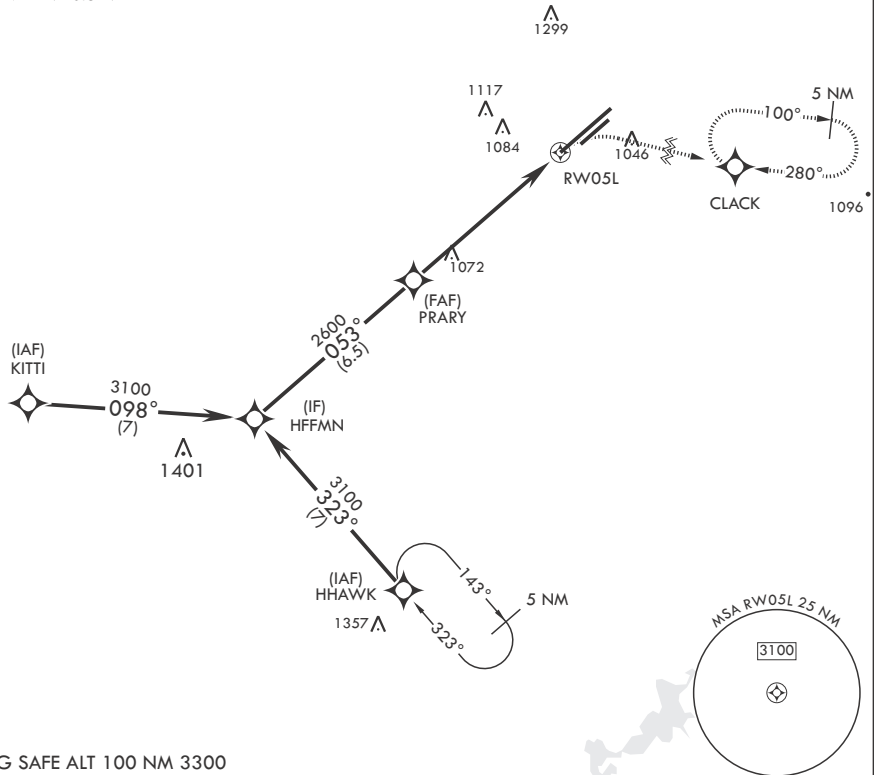
WRIGHT PATTERSON AFB (KFFO)

▼ * When ALS inop increase CAT AB RVR to 55, vis to 1 mile; CAT CD vis to 1 5/8 miles.
 ** When Rwy 23R VGSI inop, circling to Rwy 23R NA at night.

ALSF-1 MISSED APPROACH: Turn right climb to 3100 direct CLACK WPT and hold.

ATIS 124.475 269.9	COLUMBUS APP CON/DEP CON 118.85 269.275	PATTERSON TOWER 127.8 281.45	GND CON 121.8 335.8
-----------------------	--	---------------------------------	------------------------

DME/DME RNP-0.3 NA



EMERG SAFE ALT 100 NM 3300

HFFMN	VGSI and descent angles not coincident (VGSI angle 3.00/TCH 51).	3100	CLACK	ELEV 823	TDZE 803
3100	053°	PRARY	2600	1.6 NM to RW05L	RW05L
		2.74° > TCH 50		6 NM	
CATEGORY	A	B	C	D	
LNAV MDA*	1380/24	577 (600-½)	1380-1¼	577 (600-1¼)	
CIRCLING**	1380-1 557 (600-1)	1440-1 617 (700-1)	1560-2 737 (800-2)	1620-2½ 797 (800-2½)	

DAYTON, OHIO

39°50'N - 84°03'W

WRIGHT PATTERSON AFB (KFFO)

Amdt 3 13OCT16

RNAV (GPS) RWY 5L

EC-2, 20 FEB 2025 to 20 MAR 2025

EC-2, 20 FEB 2025 to 20 MAR 2025