

(ROYES7.ROYES) 24193

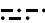
ROYES SEVEN DEPARTURE

AL-110

DAYTONA BEACH INTL (DAB)
DAYTONA BEACH, FLORIDA

ATIS
132.875
CLNC DEL
119.3
GND CON
121.9 348.6
DAYTONA TOWER
120.7 257.8
DAYTONA DEP CON
118.85 353.825

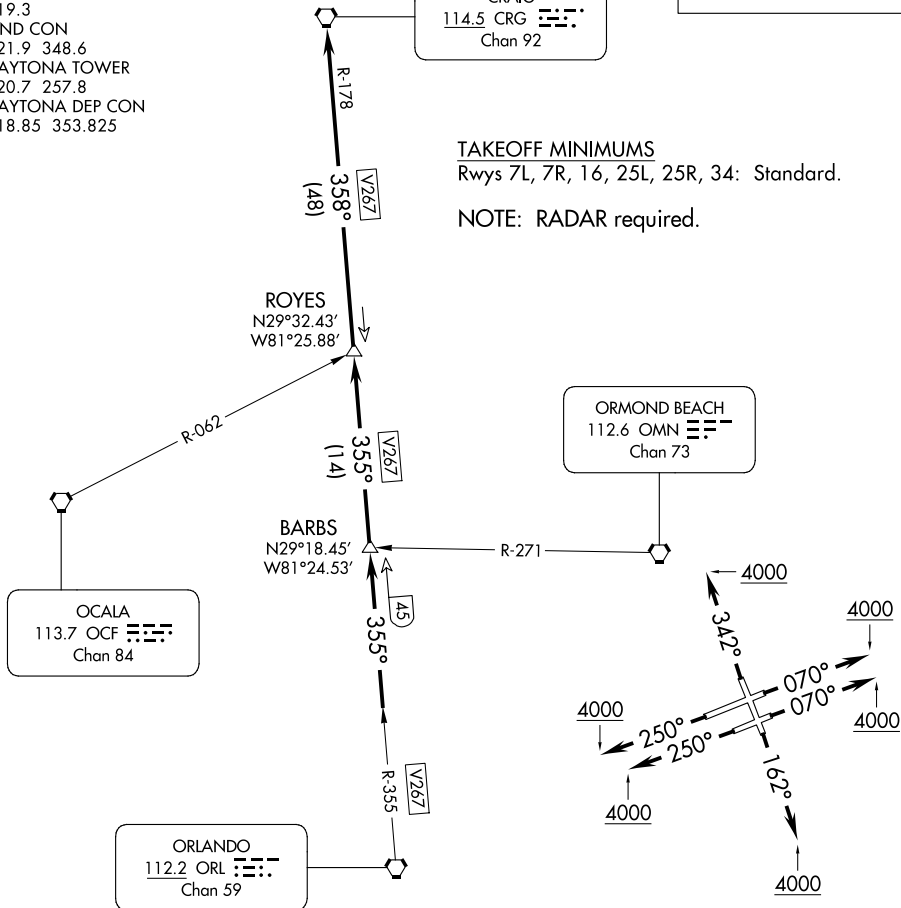
**TOP ALTITUDE:
4000**

CRAIG
114.5 CRG 
Chan 92

TAKEOFF MINIMUMS

Rwys 7L, 7R, 16, 25L, 25R, 34: Standard.

NOTE: RADAR required.



NOTE: Chart not to scale.



DEPARTURE ROUTE DESCRIPTION

- TAKEOFF RUNWAY 7L: Climb heading 070° to 4000 or as assigned by ATC, thence
- TAKEOFF RUNWAY 7R: Climb heading 070° to 4000 or as assigned by ATC, thence
- TAKEOFF RUNWAY 16: Climb heading 162° to 4000 or as assigned by ATC, thence
- TAKEOFF RUNWAY 25L: Climb heading 250° to 4000 or as assigned by ATC, thence
- TAKEOFF RUNWAY 25R: Climb heading 250° to 4000 or as assigned by ATC, thence
- TAKEOFF RUNWAY 34: Climb heading 342° to 4000 or as assigned by ATC, thence

. . . . Expect vectors to intercept CRG R-178 to CRG VORTAC, then via assigned route.
Expect clearance to filed altitude/flight level ten (10) minutes after departure.

ROYES SEVEN DEPARTURE

(ROYES7.ROYES) 25JUN15

DAYTONA BEACH, FLORIDA
DAYTONA BEACH INTL (DAB)

SE-3, 20 FEB 2025 to 20 MAR 2025

SE-3, 20 FEB 2025 to 20 MAR 2025