

DES MOINES TWO DEPARTURE

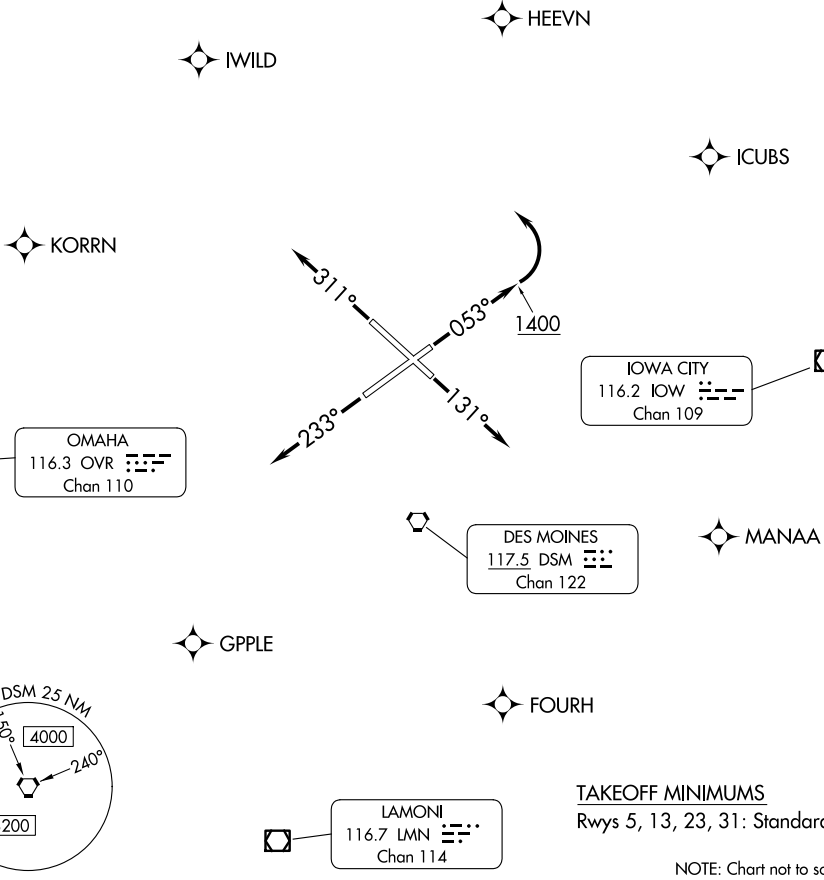
AL-117 (FAA)

DES MOINES INTL (DSM)
DES MOINES, IOWA

**TOP ALTITUDE:
5000**

For waypoints: RNAV 1 - GPS.
RADAR required.

DES MOINES DEP CON
123.9 307.15
CLNC DEL
134.15 317.55



IOWA CITY
116.2 IOW
Chan 109

OMAHA
116.3 OVR
Chan 110

DES MOINES
117.5 DSM
Chan 122

LAMONI
116.7 LMN
Chan 114

TAKEOFF MINIMUMS
Rwys 5, 13, 23, 31: Standard.

NOTE: Chart not to scale.

NC-3, 20 FEB 2025 to 20 MAR 2025

NC-3, 20 FEB 2025 to 20 MAR 2025



DEPARTURE ROUTE DESCRIPTION

- TAKEOFF RUNWAY 5:** Climb on heading 053° to 1400 before turning left for RADAR vectors to assigned route/fix, thence
 - TAKEOFF RUNWAY 13:** Climb on heading 131° for RADAR vectors to assigned route/fix, thence
 - TAKEOFF RUNWAY 23:** Climb on heading 233° for RADAR vectors to assigned route/fix, thence
 - TAKEOFF RUNWAY 31:** Climb on heading 311° for RADAR vectors to assigned route/fix, thence
- maintain 5000. Expect clearance to filed altitude 10 minutes after departure.

DES MOINES TWO DEPARTURE