

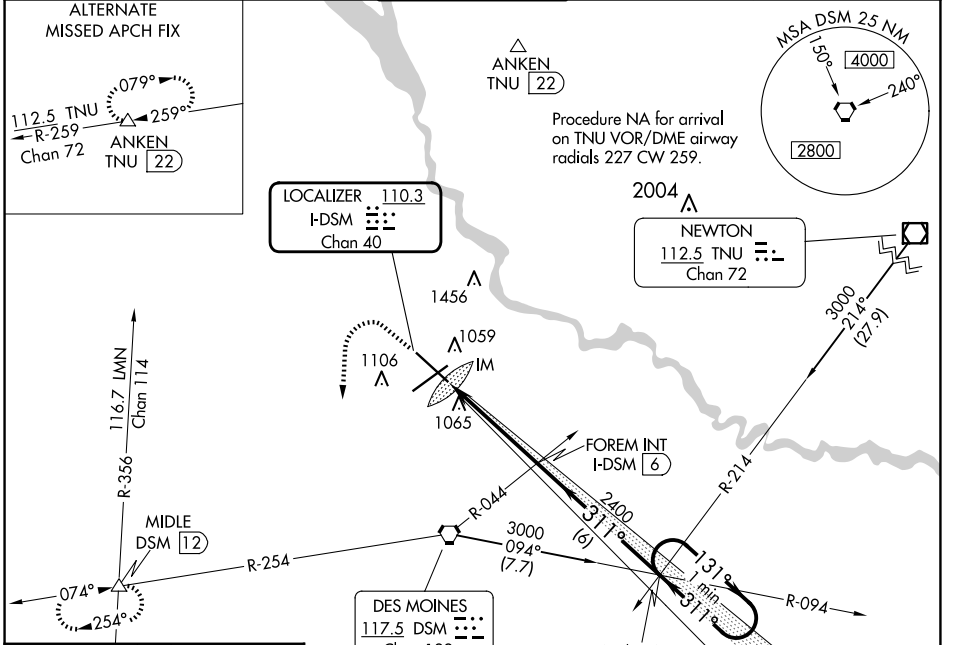
LOC/DME I-DSM <b>110.3</b> Chan 40	APP CRS <b>311°</b>	Rwy ldg TDZE Apt Elev <b>9001</b> <b>958</b> <b>958</b>
--	------------------------	--

# ILS RWY 31 (SA CAT I)

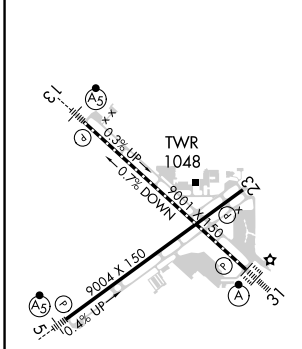
DES MOINES INTL (DSM)

<p>Requires specific OPSPEC, MSPEC, or LOA approval and use of HUD to DH.</p>	<p>ALSIF-2</p>	<p>MISSED APPROACH: Climb to 1600 then climbing left turn to 3000 on heading 180° and on DSM VORTAC R-254 to MIDDLE INT/12 DME and hold.</p>
---	----------------	--

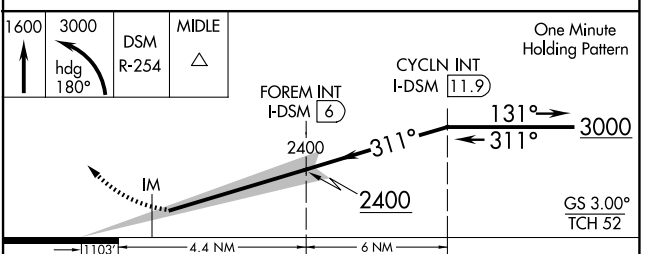
ATIS <b>119.55</b>	DES MOINES APP CON <b>123.9 307.15</b>	DES MOINES TOWER <b>118.3 257.8</b>	GND CON <b>121.9 348.6</b>	CLNC DEL <b>134.15 317.55</b>
-----------------------	---	--	-------------------------------	----------------------------------



ELEV 958	<b>D</b>	TDZE 958
----------	----------	----------



Procedure NA for arrival on DSM VORTAC airway radials 042 CW 141.



CATEGORY	A	B	C	D
S-ILS 31	RA 159/14 150 DA 1108			

**SA CATEGORY I ILS-SPECIAL AIRCREW & AIRCRAFT CERTIFICATION REQUIRED**

REIL Rwy's 5 and 23  
TDZ/CL Rwy 31  
HIRL Rwy's 13-31 and 5-23

NC-3, 20 FEB 2025 to 20 MAR 2025

NC-3, 20 FEB 2025 to 20 MAR 2025