


LOC/DME I-DWW 111.5 Chan 52	APP CRS 053°	Rwy Idg TDZE Apt Elev	9004 931 958
--	------------------------	-----------------------------	---

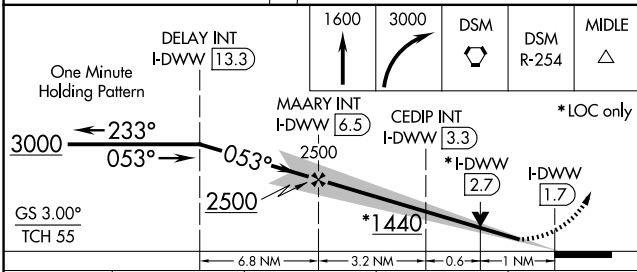
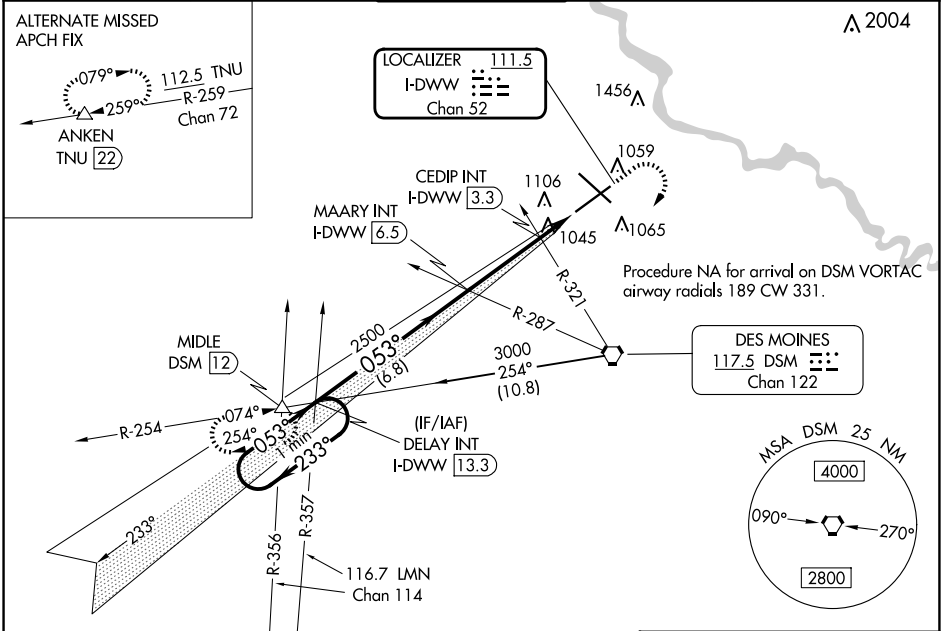
ILS or LOC RWY 5

DES MOINES INTL (DSM)

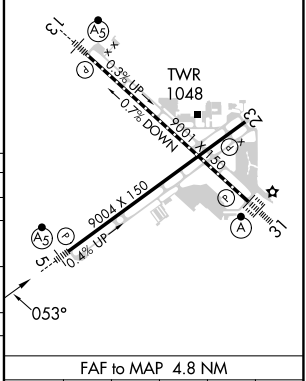
▼ For inop ALS, increase S-LOC 5 Cats C and D visibility to 1 3/8 SM and CEDIP fix minimums Cats C and D visibility to RVR 5500.
▲ Autopilot coupled approach NA below 1256 MSL.
 #RVR 1800 authorized with use of FD or AP or HUD to DA.

MALS

MISSED APPROACH: Climb to 1600 then climbing right turn to 3000 direct DSM VORTAC then on DSM VORTAC R-254 to MIDDLE INT/DSM 12 DME and hold.

ATIS 119.55	DES MOINES APP CON 123.9 307.15	DES MOINES TOWER 118.3 257.8	GND CON 121.9 348.6	CLNC DEL 134.15 317.55
-----------------------	---	--	-------------------------------	----------------------------------



ELEV 958	D TDZE 931
REIL Rvws 5 and 23 TDZ/CL Rwy 31 HIRL Rvws 13-31 and 5-23	



CATEGORY	A	B	C	D
S-ILS 5 #	1131/24			
S-LOC 5	1440/24	509 (500-1/2)	1440/55	509 (500-1)
C CIRCLING	1440-1	482 (500-1)	1600-1 3/4 642 (700-1 3/4)	1760-2 1/2 802 (900-2 1/2)
CEDIP FIX MINIMUMS (DUAL VOR RECEIVERS OR DME REQUIRED)				
S-LOC 5	1300/24	369 (400-1/2)	1300/35	369 (400-3/4)
C CIRCLING	1420-1	462 (500-1)	1600-1 3/4 642 (700-1 3/4)	1760-2 1/2 802 (900-2 1/2)

FAF to MAP 4.8 NM					
Knots	60	90	120	150	180
Min:Sec	4:48	3:12	2:24	1:55	1:36

NC-3, 20 FEB 2025 to 20 MAR 2025

NC-3, 20 FEB 2025 to 20 MAR 2025