

CUUGR TWO ARRIVAL (RNAV) AL-119 (FAA)

EC-1, 20 FEB 2025 to 20 MAR 2025

D-ATIS
133.675
DETROIT APP CON
126.225 284.0

NOTE: RADAR required.

NOTE: RNAV 1.

NOTE: DME/DME/IRU or GPS required.

NOTE: Use Rwy 3R Transition or as assigned by ATC.

NOTE: Expect runway assignment from Detroit APP CON no later than 10 NM from CUUGR.

NOTE: Jet aircraft descend via Mach number until intercepting 280K. Maintain 280K until slowed by the STAR.

NOTE: For use when DTW landing north. When DTW landing south or west, file and expect the TPGUN RNAV STAR.

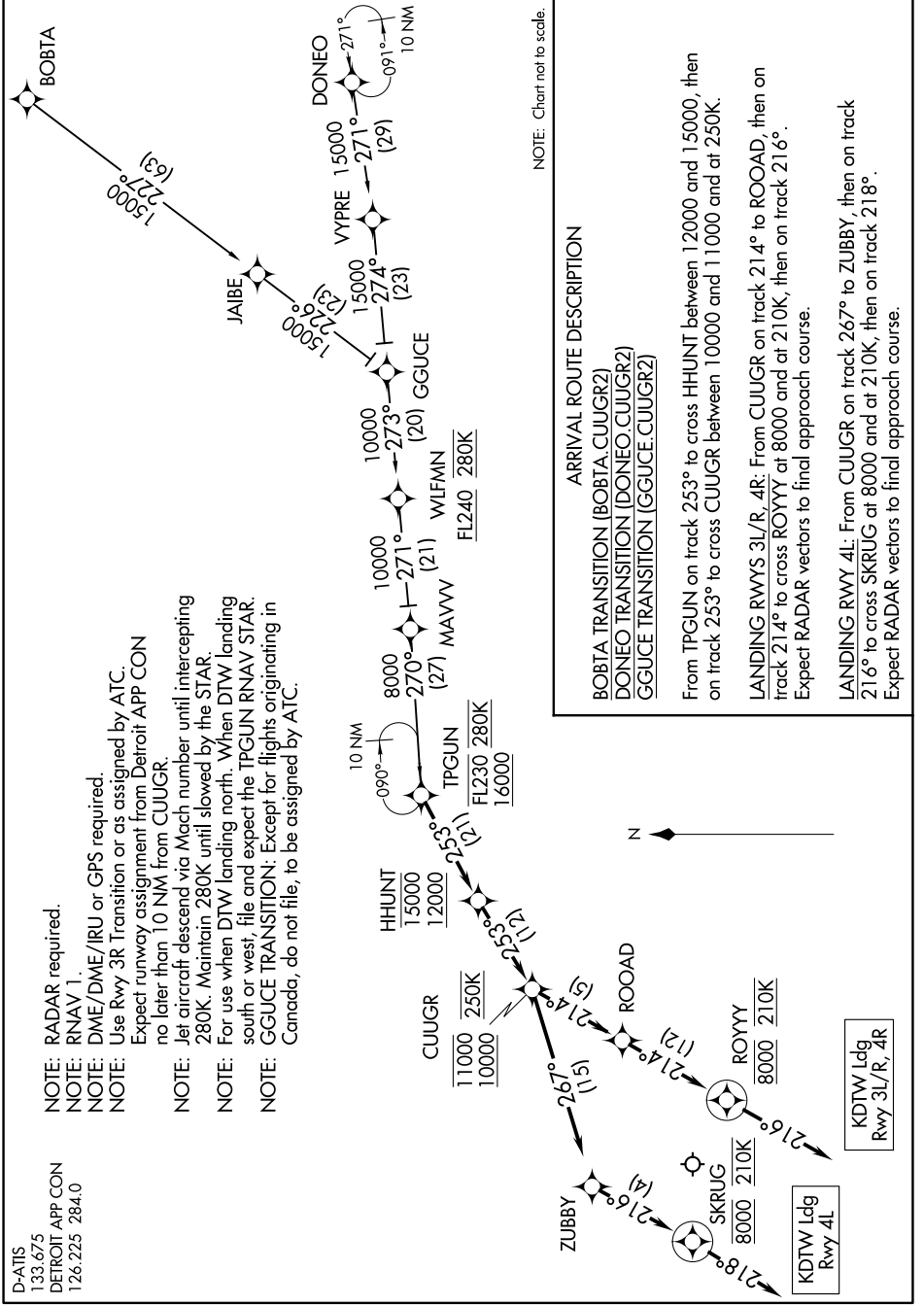
NOTE: GGUCE TRANSITION: Except for flights originating in Canada, do not file, to be assigned by ATC.

CUUGR TWO ARRIVAL (RNAV)

(TPGUN.CUUGR2) 10OCT19

DETROIT, MICHIGAN

DETROIT METRO WAYNE COUNTY (DTW)



EC-1, 20 FEB 2025 to 20 MAR 2025