


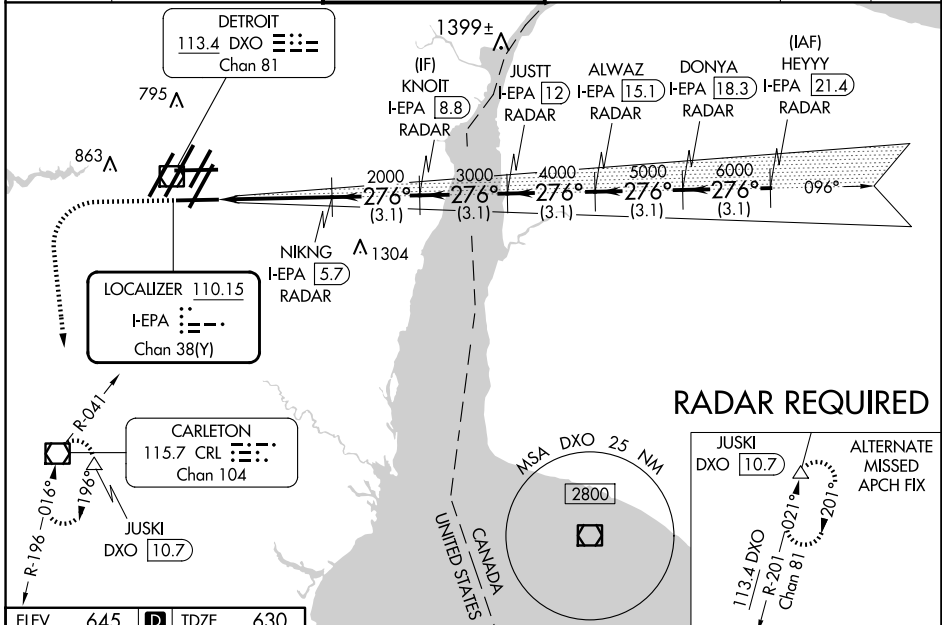
LOC/DME I-EPA 110.15	APP CRS 276°	Rwy Ldg TDZE 8500 630	Apt Elev 645
Chan 38(Y)			

ILS or LOC RWY 27L

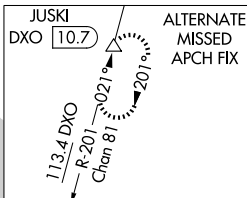
DETROIT METRO WAYNE COUNTY (DTW)

<p>▽ DME or RADAR required. Simultaneous approach authorized. **RVR 1800 authorized with use of FD or AP or HUD to DA.</p>	<p>MALSR</p> 	<p>MISSED APPROACH: Climb to 1100 then climbing left turn to 4000 on heading 180° and CRL VOR/DME R-041 to CRL VOR/DME and hold, continue climb-in-hold to 4000.</p>
---	--	--

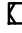
D-ATIS 133.675	DETROIT APP CON 124.05 284.0	METRO TOWER 128.75 317.725	GND CON 121.8 (NW) 119.45 (NE) 132.725 (SW) 119.25 (SE)	CLNC DEL 120.65	CPDLC
--------------------------	--	--------------------------------------	---	---------------------------	-------

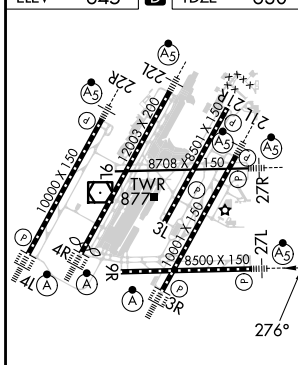


RADAR REQUIRED



ELEV 645	D	TDZE 630
----------	----------	----------

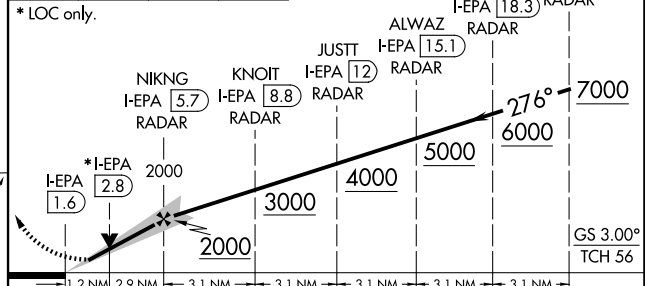
1100	4000	CRL R-041	CRL	VGSI and ILS glidepath not coincident (VGSI Angle 3.00/TCH 71).
↑	hdg 180°			HEYYY I-EPA 21.4 RADAR



TDZ/CL Rws 3R, 4L, 4R and 22R
REIL Rws 3L, 9L, 9R and 21R
HIRL all runways

FAF to MAP 4.1 NM

Knots	60	90	120	150	180
Min:Sec	4:06	2:44	2:03	1:38	1:22



1.2 NM	2.9 NM	3.1 NM	3.1 NM	3.1 NM	3.1 NM	3.1 NM
CATEGORY	A	B	C	D		
S-ILS 27L **	830/24 200 (200-1/2)					
S-LOC 27L	1080/24	450 (500-1/2)	1080/45	450 (500-3/4)		
C CIRCLING	1180-1	535 (600-1)	1180-1 1/2	535 (600-1 1/2)	1240-2	595 (600-2)

EC-1, 20 FEB 2025 to 20 MAR 2025

EC-1, 20 FEB 2025 to 20 MAR 2025