

LOC/DME I-HUU 111.5 Chan 52	APP CRS 036°	Rwy Idg 10001 TDZE 633 Apt Elev 645
-------------------------------------------------	------------------------	----------------------------------------------------------------

ILS or LOC RWY 3R

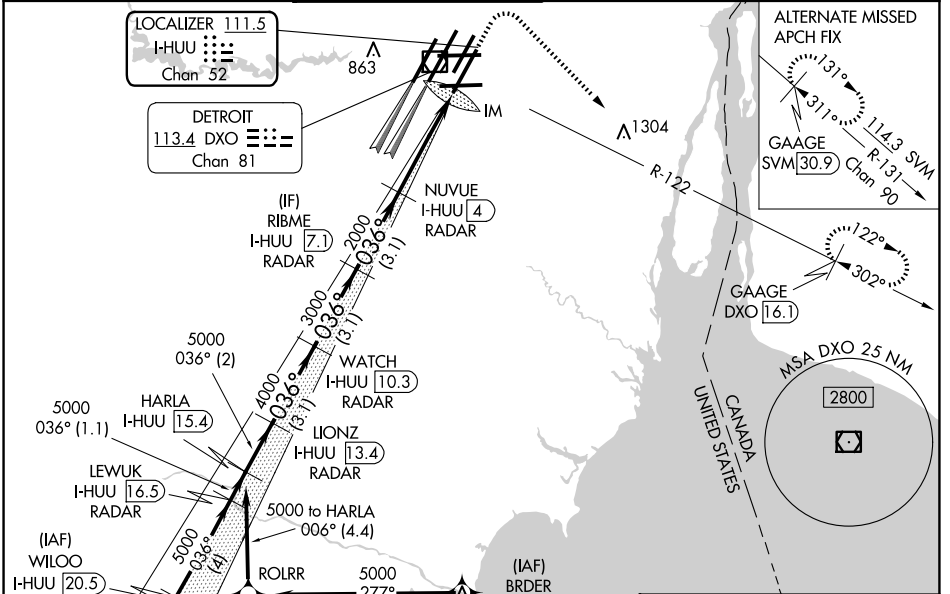
DETROIT METRO WAYNE COUNTY (DTW)

RNAV 1-GPS.
MERCIA and BRDER: RNAV 1-DME/DME/IRU or GPS required. Aircraft not DME/DME/IRU or GPS equipped - RADAR required for procedure entry.

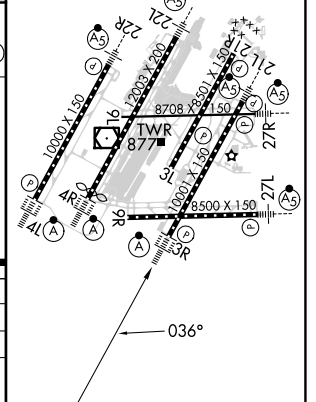
Simultaneous approach authorized. DME required.

ALSF-2
MISSED APPROACH: Climb to 1100 then climbing right turn to 4000 on DXO VOR/DME R-122 to GAAGE/DXO 16.1 DME and hold.

D-ATIS 133.675	DETROIT APP CON 125.15 284.0	METRO TOWER 118.4 317.725	GND CON 121.8 (NW) 119.45 (NE) 132.725 (SW) 119.25 (SE)	CLNC DEL 120.65	CPDLC
--------------------------	----------------------------------------	-------------------------------------	-----------------------------------------------------------------------------	---------------------------	-------



ELEV 645	D TDZE 633
HIRL all runways	
REL Rwy 3L, 9L, 9R and 21R	
TDZ/CL Rwy 3R, 4L, 4R and 22R	



HARLA I-HUU 15.4	LIONZ I-HUU 13.4	WATCH I-HUU 10.3	RIBME I-HUU 7.1	I-HUU DME ANTENNA	NUVUE I-HUU 4	GAAGE DXO 16.1
5000	5000	4000	3000	2000	*I-HUU 1	I-HUU 0.2
GS 3.00° VGSi and ILS glidepath not coincident (VGSi Angle 3.00°/TCH 70).						
2 NM 3.1 NM 3.1 NM 3.1 NM 2.9 NM 1.1 0.1						

CATEGORY	A	B	C	D
S-ILS 3R	833/18 200 (200-½)			
S-LOC 3R	1080/24	447 (500-½)	1080/45	447 (500-¾)
C CIRCLING	1180-1	535 (600-1)	1180-1½ 535 (600-1½)	1240-2 595 (600-2)

EC-1, 20 FEB 2025 to 20 MAR 2025

EC-1, 20 FEB 2025 to 20 MAR 2025