

LOC/DME I-DTW 110.7	APP CRS 036°	Rwy Idg TDZE Apt Elev	11494 640 645
Chan 44			

ILS or LOC RWY 4R

DETROIT METRO WAYNE COUNTY (DTW)

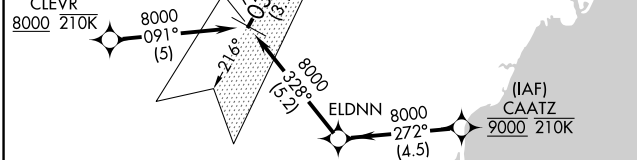
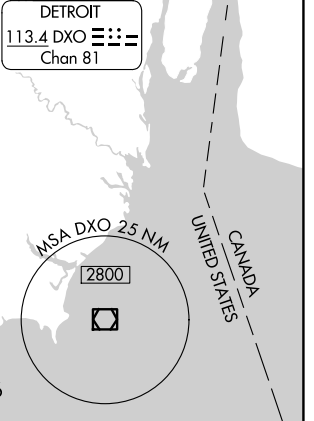
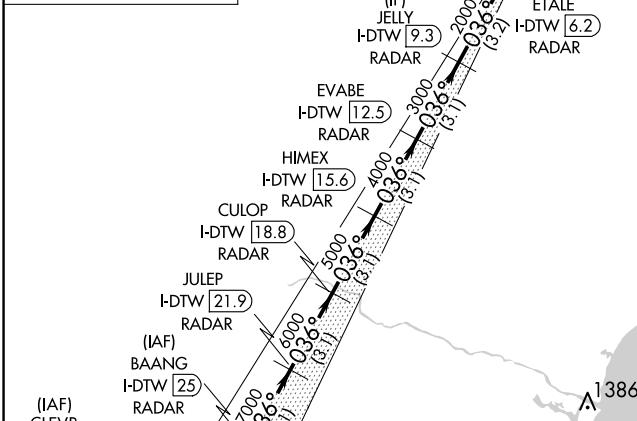
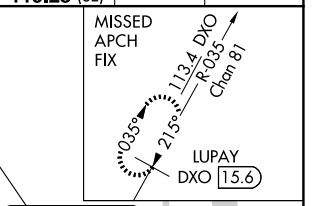
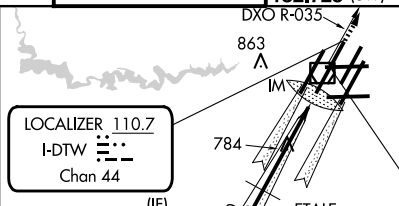
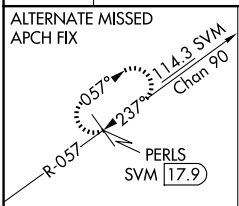
RNAV 1-GPS.
CLEVR, CAATZ and ELDNN: RNAV 1-DME/DME/IRU or GPS required.
Aircraft not DME/DME/IRU or GPS equipped - RADAR required for procedure entry.
DME or RADAR required.

ALSF-2

MISSED APPROACH: Climb to 4000 on DXO VOR/DME R-035 to LUPAY/DXO VOR/DME/15.6 DME and hold.

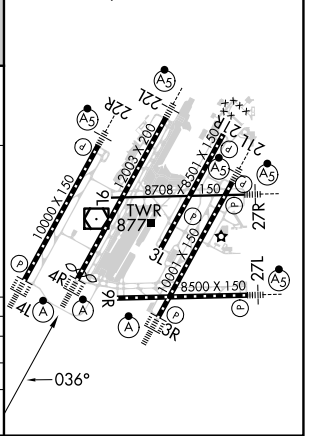
Simultaneous approach authorized. For inop ALS, increase S-LOC 4R Cat C/D visibility to RVR 6000.

D-ATIS 133.675	DETROIT APP CON 124.05 284.0	METRO TOWER 128.125 317.725	GND CON 121.8 (NW) 132.725 (SW)	119.45 (NE) 119.25 (SE)	CLNC DEL 120.65	CPDLC
--------------------------	--	---------------------------------------	---	--	---------------------------	-------



ELEV 645 **D** TDZE 640
TDZ/CL Rws 3R, 4L, 4R and 22R
REIL Rws 3L, 9L, 9R and 21R
HIRL all runways

BAANG I-DTW [25] RADAR	JULEP I-DTW [21.9] RADAR	CULOP I-DTW [18.8] RADAR	HIMEX I-DTW [15.6] RADAR	EVABE I-DTW [12.5] RADAR	JELLY I-DTW [9.3] RADAR	ETALE I-DTW [6.2] RADAR	LUPAY DXO [15.6]
8000	7000	6000	5000	4000	3000	2000	
GS 3.00° TCH 52							
3.1 NM		3.1 NM		3.1 NM		3.2 NM 3 NM 0.9 0.2	



CATEGORY	A	B	C	D
S-ILS 4R	840/18 200 (200-½)			
S-LOC 4R	1040/24	400 (400-½)	1040/35	400 (400-¾)
CIRCLING	1180-1	535 (600-1)	1180-½ 535 (600-½)	1240-2 595 (600-2)

EC-1, 20 FEB 2025 to 20 MAR 2025

EC-1, 20 FEB 2025 to 20 MAR 2025