

LOC/DME I-DTW 110.7	APP CRS 036°	Rwy Idg TDZE Apt Elev	11494 640 645
Chan 44			

(CLOSE PARALLEL)

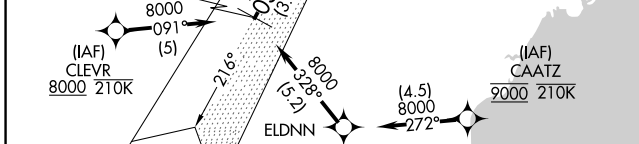
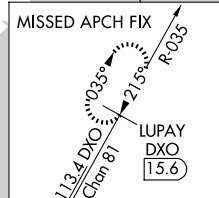
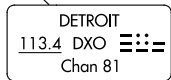
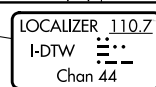
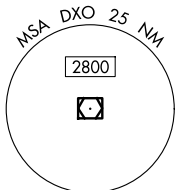
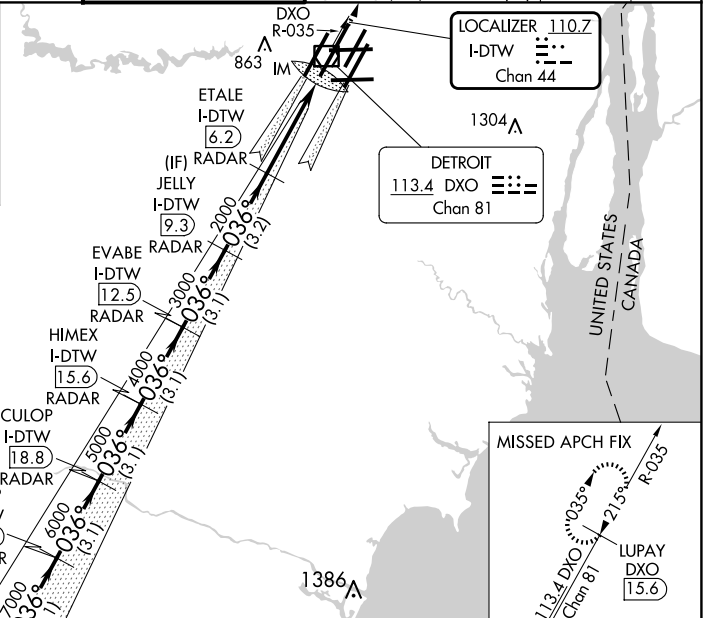
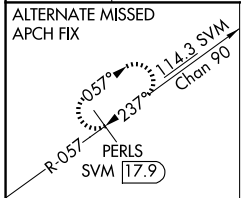
DETROIT METRO WAYNE COUNTY (DTW)

RNAV 1-GPS, DME or RADAR required. CLEVR, CAATZ and ELDNN: RNAV 1-DME/DME/IRU or GPS required. Aircraft not DME/DME/IRU or GPS equipped- RADAR required for procedure entry.

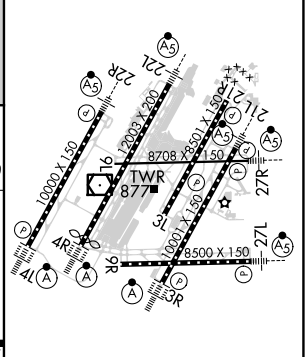
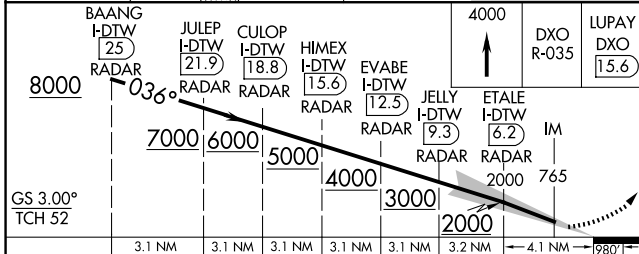
Simultaneous approach authorized. Use of FD or AP required during simultaneous operations. Dual VHF Comm required. See additional requirements on AAPP. Procedure NA when glideslope not available.

ALSF-2 MISSED APPROACH: Climb to 4000 on DXO VOR/DME R-035 to LUPAY/DXO VOR/DME 15.6 DME and hold.

D-ATIS 133.675	DETROIT APP CON 124.05 284.0	METRO TOWER 128.125 317.725 PRM 135.775	GND CON 121.8 (NW) 119.45 (NE) 132.725 (SW) 119.25 (SE)	CLNC DEL 120.65	CPDLC
--------------------------	--	---	---	---------------------------	-------



ELEV 645	TDZE 640
----------	----------



GS 3.00° TCH 52	3.1 NM	3.1 NM	3.1 NM	3.1 NM	3.1 NM	3.2 NM	4.1 NM	980'
	A	B	C	D				
S-ILS 4R	CAT II RA 104/12		100 DA 740					
S-ILS 4R	CAT III		RVR 06					

CATEGORY II & III ILS - SPECIAL AIRCREW & AIRCRAFT CERTIFICATION REQUIRED

TDZ/CL Rwy 3R, 4L, 4R and 22R
REIL Rwy 3L, 9L, 9R and 21R
HIRL all runways

EC-1, 20 FEB 2025 to 20 MAR 2025

EC-1, 20 FEB 2025 to 20 MAR 2025