

DETROIT, MICHIGAN

AL-119 (FAA)

ILS PRM RWY 4R (SA CAT I) (CLOSE PARALLEL)

24249

LOC/DME I-DTW 110.7 Chan 44	APP CRS 036°	Rwy Idg TDZE Apt Elev	11494 640 645
---	------------------------	-----------------------------	--

DETROIT METRO WAYNE COUNTY (DTW)

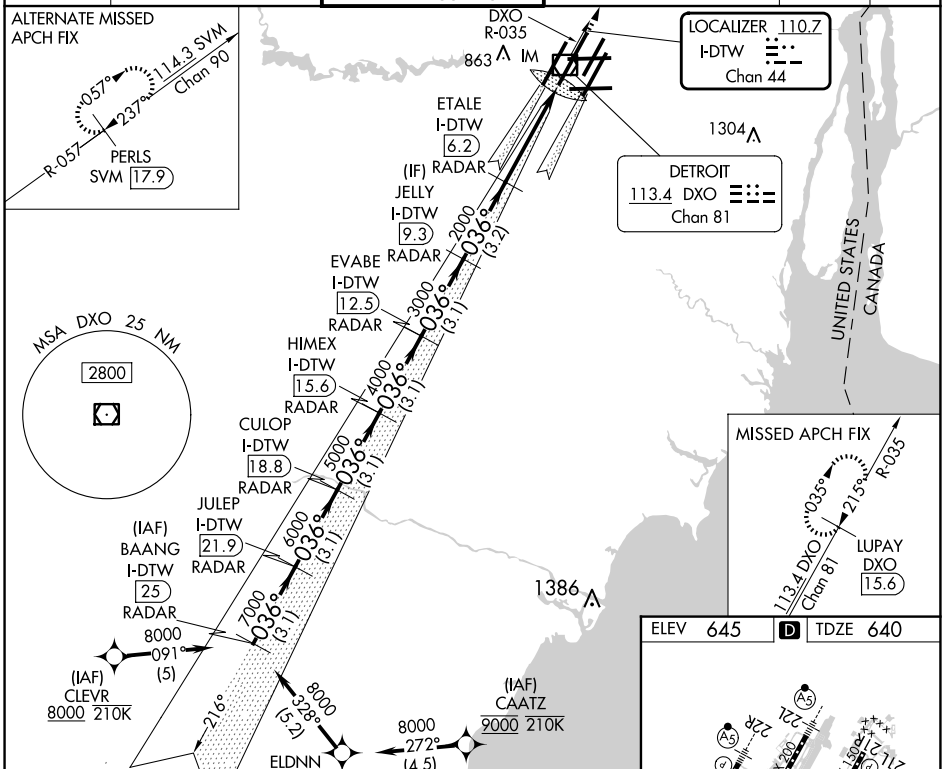
RNAV 1-GPS. DME or RADAR required. CLEVR, CAATZ and ELDNN: RNAV 1-DME/DME/IRU or GPS required. Aircraft not DME/DME/IRU or GPS equipped- RADAR required for procedure entry.

ALSIF-2

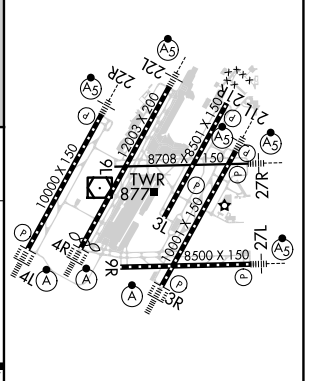
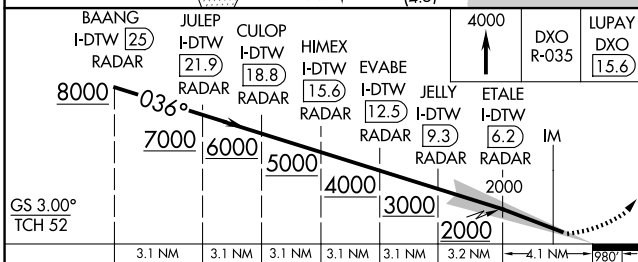
MISSED APPROACH:
Climb to 4000 on DXO
VOR/DME R-035 to
LUPAY/DXO VOR/DME
15.6 DME and hold.

Simultaneous approach authorized. Use of FD or AP required during simultaneous operations. Dual VHF Comm required. See additional requirements on AAUP. Procedure NA when glideslope not available. Requires specific OPSPEC, MSPEC, or LOA approval and use of HUD to DH.

D-ATIS 133.675	DETROIT APP CON 124.05 284.0	METRO TOWER 128.125 317.725 PRM 135.775	GND CON 121.8 (NW) 119.45 (NE) 132.725 (SW) 119.25 (SE)	CLNC DEL 120.65	CPDLC
--------------------------	--	---	---	---------------------------	-------



ELEV 645	TDZE 640
----------	----------



SA CATEGORY I ILS - SPECIAL AIRCREW & AIRCRAFT CERTIFICATION REQUIRED

TDZ/CL Rwy's 3R, 4L, 4R and 22R
REIL Rwy's 3L, 9L, 9R and 21R
HIRL all runways

DETROIT, MICHIGAN
Amdt 3A 13SEP18

42°13'N-83°21'W

DETROIT METRO WAYNE COUNTY (DTW)

ILS PRM RWY 4R (SA CAT I) (CLOSE PARALLEL)

EC-1, 20 FEB 2025 to 20 MAR 2025

EC-1, 20 FEB 2025 to 20 MAR 2025