

DETROIT, MICHIGAN

AL-119 (FAA)

# ILS PRM Z RWY 4L (CLOSE PARALLEL)

DETROIT METRO WAYNE COUNTY (DTW)

LOC/DME I-HJT <b>111.95</b> Chan <b>56 (Y)</b>	APP CRS <b>036°</b>	Rwy Idg TDZE Apt Elev <b>10000</b> <b>645</b> <b>645</b>
--	------------------------	---

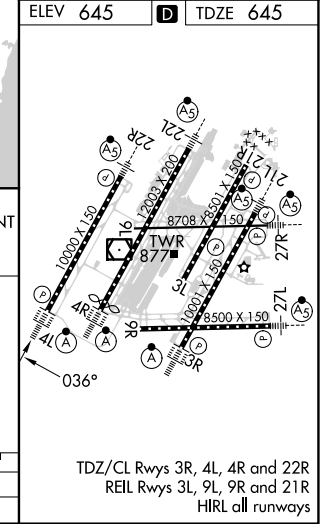
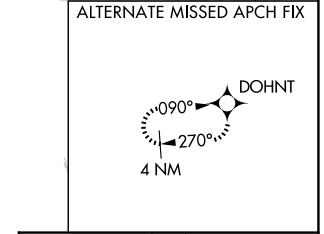
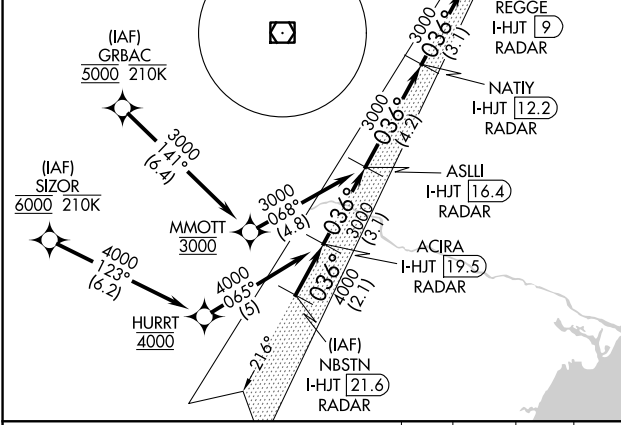
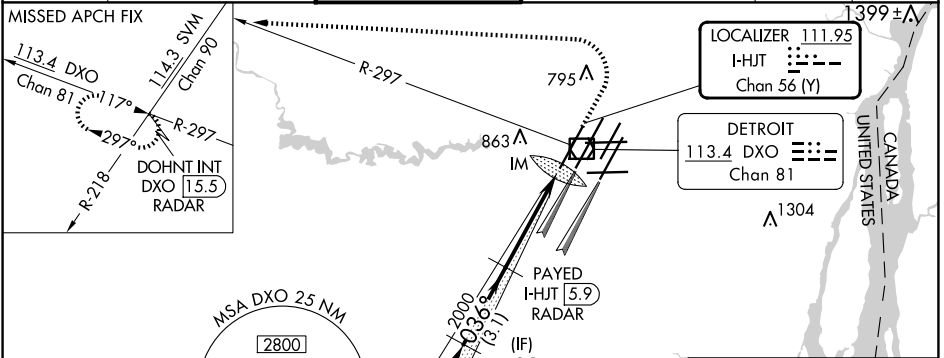
From GRBAC, SIZOR: RNAV 1-DME/DME/IRU or GPS required. Aircraft not DME/DME/IRU or GPS equipped - RADAR required for procedure entry. DME or RADAR required.

Simultaneous approach authorized. Use of FD or AP required during simultaneous operations. Dual VHF Comm required. See additional requirements on AAUP.

ALSF-2

MISSED APPROACH: Climb to 1100 then climbing left turn to 4000 on DXO VOR/DME R-297 to DOHNT INT/DXO 15.5 DME/RADAR and hold.

D-ATIS <b>133.675</b>	DETROIT APP CON <b>124.05 284.0</b>	METRO TOWER <b>135.0 317.725</b> <b>PRM 127.05</b>	GND CON <b>121.8 (NW) 119.45 (NE)</b> <b>132.725 (SW) 119.25 (SE)</b>	CLNC DEL <b>120.65</b>	CPDLC
--------------------------	--	--	---	---------------------------	-------



VGSI and ILS glidepath not coincident (VGSI Angle 3.00/TCH 71).	1100	4000	DXO R-297	DOHNT INT
ASLLI I-HJT 16.4 RADAR	NATII I-HJT 12.2 RADAR	REGGE I-HJT 9 RADAR	PAYED I-HJT 5.9 RADAR	
3000	3000	3000	2000	2000
CATEGORY A	B	C	D	
S-ILS 4L	845/18 200 (200-½)			

DETROIT, MICHIGAN  
Orig-B 30JAN20

42°13'N-83°21'W

DETROIT METRO WAYNE COUNTY (DTW)  
ILS PRM Z RWY 4L (CLOSE PARALLEL)

EC-1, 20 FEB 2025 to 20 MAR 2025

EC-1, 20 FEB 2025 to 20 MAR 2025