

LOC/DME I-HJT 111.95 Chan 56(Y)	APP CRS 036°	Rwy Idg TDZE Apt Elev 10000 645 645
---	------------------------	---

ILS Z RWY 4L (CAT II & III)

DETROIT METRO WAYNE COUNTY (DTW)

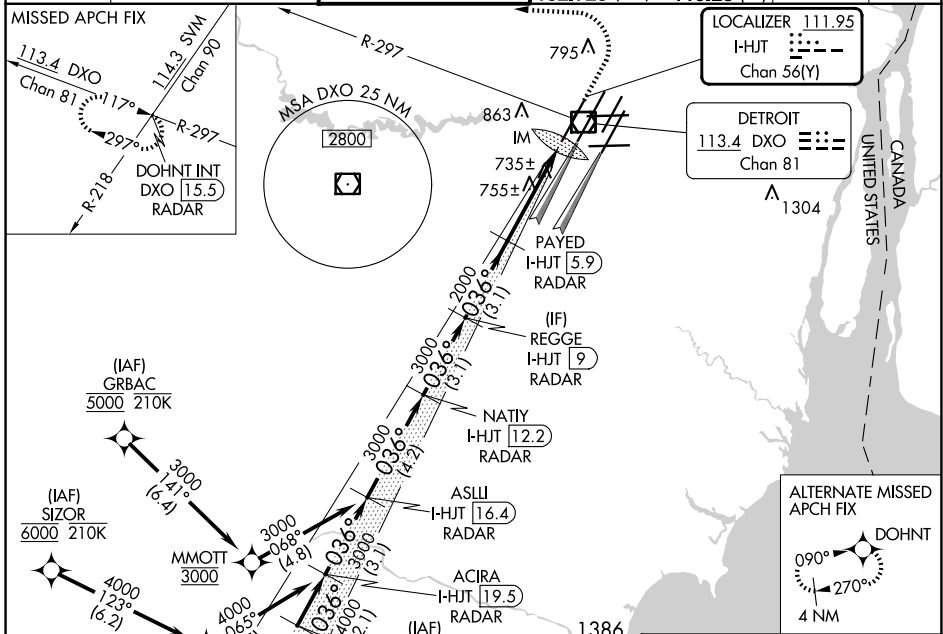
From GRBAC, SIZOR: RNAV 1-DME/DME/IRU or GPS required. Aircraft not DME/DME/IRU or GPS equipped - RADAR required for procedure entry. DME or RADAR required.

ALSF-2

MISSED APPROACH: Climb to 1100 then climbing left turn to 4000 on DXO VOR/DME R-297 to DOHNT INT/DXO 15.5 DME/RADAR and hold.

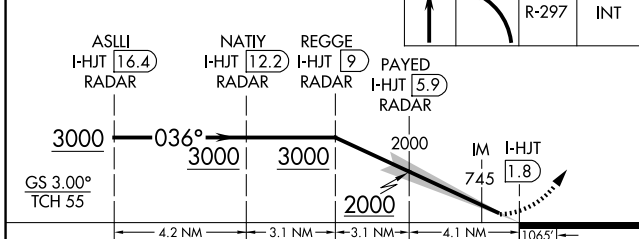
Simultaneous approach authorized. CAT II; RVR 1000 authorized with specific OPSPEC, MSPEC, or LOA approval and use of autoland or HUD to touchdown.

D-ATIS 133.675	DETROIT APP CON 124.05 284.0	METRO TOWER 135.0 317.725	GND CON (NW) 121.8	GND CON (NE) 119.45	GND CON (SE) 119.25	CLNC DEL 120.65	CPDLC
--------------------------	--	-------------------------------------	------------------------------	-------------------------------	-------------------------------	---------------------------	-------

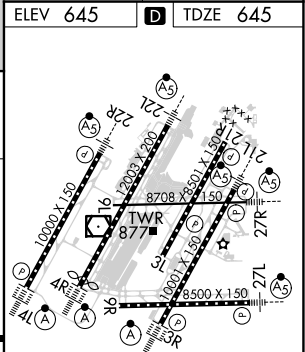


ELEV 645	TDZE 645
-----------------	-----------------

VGSI and ILS glidepath not coincident (VGSI Angle 3.00/TCH 71).



CATEGORY	A	B	C	D
S-ILS 4L	CAT II RA 101/12		100 DA 745	
S-ILS 4L	CAT III RVR 600			



CATEGORY II & III ILS - SPECIAL AIRCREW & AIRCRAFT CERTIFICATION REQUIRED

TDZ/CL Rwy's 3R, 4L, 4R and 22R
REIL Rwy's 3L, 9L, 9R and 21R
HIRL all runways