

LOC/DME I-JKI 111.95 Chan 56 (Y)	APP CRS 216°	Rwy Idg TDZE 642 Apt Elev 645
--	------------------------	---

ILS Z or LOC RWY 22R

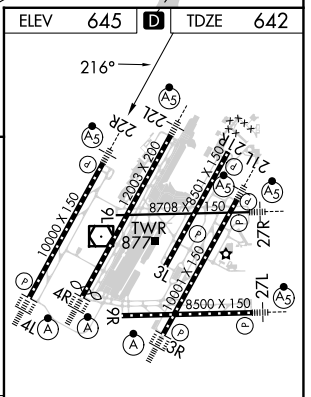
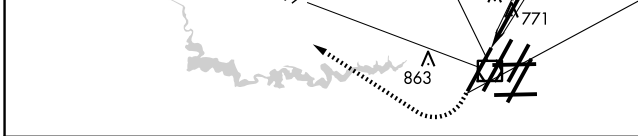
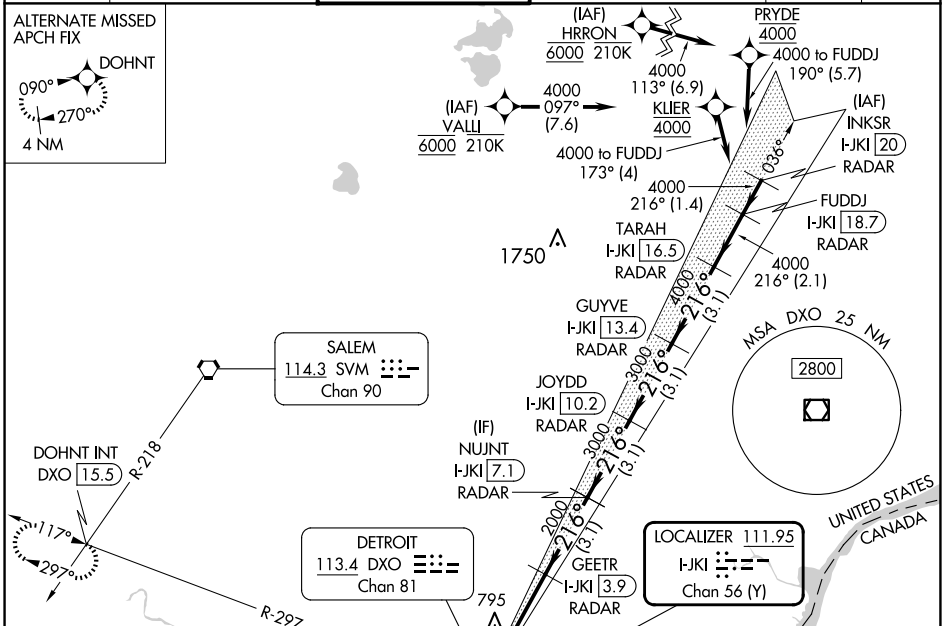
DETROIT METRO WAYNE COUNTY (DTW)

RNAV 1-GPS. HRRON and VALLI: RNAV 1-DME/DME/IRU or GPS required.
Aircraft not DME/DME/IRU or GPS equipped - RADAR required for procedure entry.

MALSR MISSED APPROACH: Climb to 1100 then climbing right turn to 4000 on DXO VOR/DME R-297 to DOHNT INT/DXO 15.5 DME and hold.

Simultaneous approach authorized.
**RVR 1800 authorized with use of FD or AP or HUD to DA.

D-ATIS 133.675	DETROIT APP CON 124.05 284.0	METRO TOWER 135.0 317.725	GND CON 121.8 (NW) 119.45 (NE) 132.75 (SW) 119.25 (SE)	CLNC DEL 120.65	CPDLC
--------------------------	--	-------------------------------------	--	---------------------------	-------



ELEV 645	TDZE 642								
VGSIs and ILS glidepath not coincident (VGS Angle 3.00/TCH 71).									
*LOC only.									
<table border="1"> <tr> <td>GEETR I-JKI [3.9] RADAR</td> <td>NUJNT I-JKI [7.1] RADAR</td> <td>JOYDD I-JKI [10.2] RADAR</td> <td>GUYVE I-JKI [13.4] RADAR</td> <td>TARAH I-JKI [16.5] RADAR</td> <td>FUDDJ I-JKI [18.7] RADAR</td> </tr> </table>		GEETR I-JKI [3.9] RADAR	NUJNT I-JKI [7.1] RADAR	JOYDD I-JKI [10.2] RADAR	GUYVE I-JKI [13.4] RADAR	TARAH I-JKI [16.5] RADAR	FUDDJ I-JKI [18.7] RADAR		
GEETR I-JKI [3.9] RADAR	NUJNT I-JKI [7.1] RADAR	JOYDD I-JKI [10.2] RADAR	GUYVE I-JKI [13.4] RADAR	TARAH I-JKI [16.5] RADAR	FUDDJ I-JKI [18.7] RADAR				
<table border="1"> <tr> <td>I-JKI [0.9] DME ANTENNA I-JKI [0.2]</td> <td>2000</td> <td>3000</td> <td>3000</td> <td>4000</td> <td>4000</td> <td>4000</td> </tr> </table>		I-JKI [0.9] DME ANTENNA I-JKI [0.2]	2000	3000	3000	4000	4000	4000	
I-JKI [0.9] DME ANTENNA I-JKI [0.2]	2000	3000	3000	4000	4000	4000			
<table border="1"> <tr> <td>11056</td> <td>1.1 NM</td> <td>3 NM</td> <td>3.1 NM</td> <td>3.1 NM</td> <td>3.1 NM</td> <td>3.1 NM</td> <td>2.1 NM</td> </tr> </table>		11056	1.1 NM	3 NM	3.1 NM	3.1 NM	3.1 NM	3.1 NM	2.1 NM
11056	1.1 NM	3 NM	3.1 NM	3.1 NM	3.1 NM	3.1 NM	2.1 NM		
CATEGORY	A	B	C	D					
S-ILS 22R**	842/24		200 (200-1/2)						
S-LOC 22R	1060/24	418 (500-1/2)	1060/40	418 (500-3/4)					
☐ CIRCLING	1180-1	535 (600-1)	1180-1/2	1240-2					
	535 (600-1/2) 595 (600-2)								
TDZ/CL Rwys 3R, 4L, 4R and 22R		REIL Rwys 3L, 9L, 9R and 21R							
HIRL all Rwys		FAF to MAP 4.1 NM							
Knots	60	90	120	150	180				
Min:Sec	4:06	2:44	2:03	1:38	1:22				

EC-1, 20 FEB 2025 to 20 MAR 2025

EC-1, 20 FEB 2025 to 20 MAR 2025