

KAYLN THREE DEPARTURE (RNAV)  
(KAYLN3.KAYLN) 16MAN724

DETROIT METRO WAYNE COUNTY (DTW)  
DETROIT, MICHIGAN

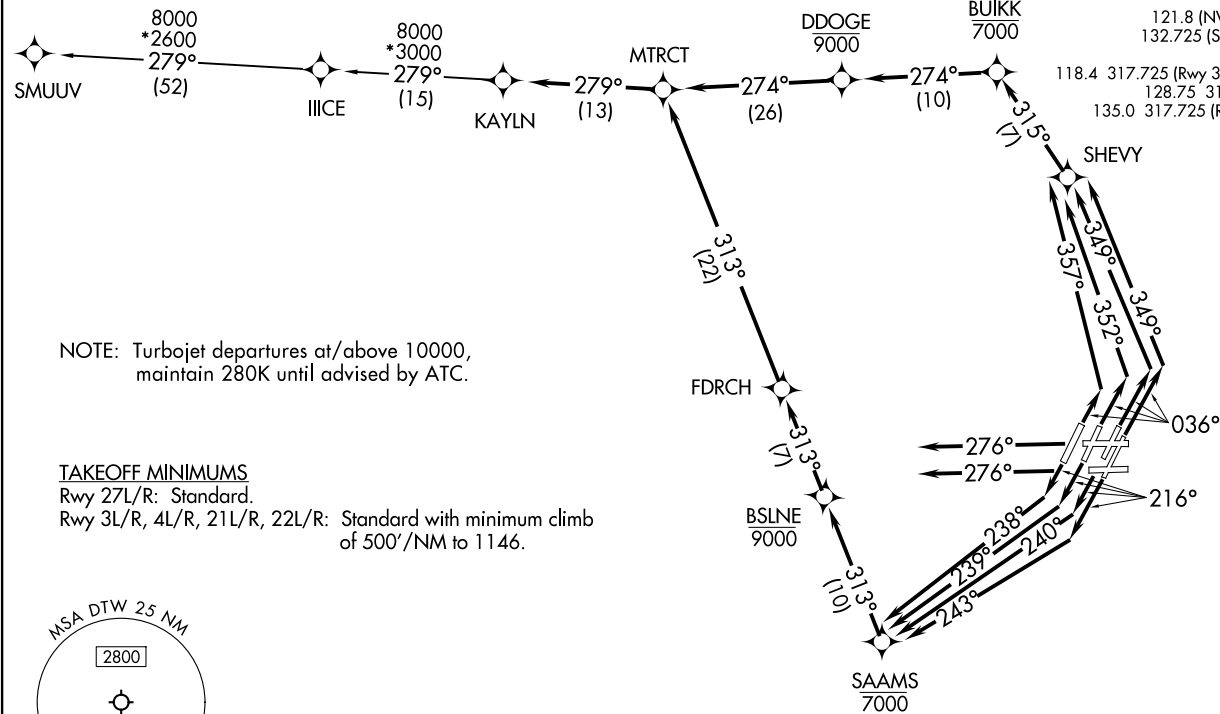
(KAYLN3.KAYLN) 24137  
KAYLN THREE DEPARTURE (RNAV)

DETROIT METRO WAYNE COUNTY (DTW)  
DETROIT, MICHIGAN

**TOP ALTITUDE:  
17000**

RNAV 1 - DME/DME/IRU or GPS.  
RADAR required.

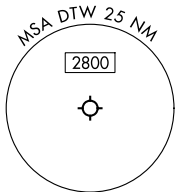
DETROIT DEP CON  
125.525 284.0  
D-ATIS 118.125  
CLNC DEL 120.65  
CPDLC  
GND CON  
121.8 (NW) 119.45 (NE)  
132.725 (SW) 119.25 (SE)  
METRO TOWER  
118.4 317.725 (Rwy 3L/R, 21L/R, 27R)  
128.75 317.725 (Rwy 27L)  
135.0 317.725 (Rwy 4L/R, 22L/R)



NOTE: Turbojet departures at/above 10000, maintain 280K until advised by ATC.

TAKEOFF MINIMUMS

Rwy 27L/R: Standard.  
Rwy 3L/R, 4L/R, 21L/R, 22L/R: Standard with minimum climb of 500'/NM to 1146.



(CONTINUED ON FOLLOWING PAGE)

NOTE: Chart not to scale.



DEPARTURE ROUTE DESCRIPTION

SEE ADDITIONAL REQUIREMENTS ON AAUP.

TAKEOFF RUNWAYS 3L/R: Climb on heading 036° to intercept course 349° to SHEVY, then on track 315° to cross BUIKK at or below 7000, then on track 274° to cross DDOGE at or below 9000, then on track 274° to MTRCT, thence....

TAKEOFF RUNWAY 4L: Climb on heading 036° to intercept course 357° to SHEVY, then on track 315° to cross BUIKK at or below 7000, then on track 274° to cross DDOGE at or below 9000, then on track 274° to MTRCT, thence....

TAKEOFF RUNWAY 4R: Climb on heading 036° to intercept course 352° to SHEVY, then on track 315° to cross BUIKK at or below 7000, then on track 274° to cross DDOGE at or below 9000, then on track 274° to MTRCT, thence....

TAKEOFF RUNWAY 21L: Climb on heading 216° to intercept course 243° to cross SAAMS at or below 7000, then on track 313° to cross BSLNE at or below 9000, then on track 313° to FDRCH, then on track 313° to MTRCT, thence....

TAKEOFF RUNWAY 21R: Climb on heading 216° to intercept course 240° to cross SAAMS at or below 7000, then on track 313° to cross BSLNE at or below 9000, then on track 313° to FDRCH, then on track 313° to MTRCT, thence....

TAKEOFF RUNWAY 22L: Climb on heading 216° to intercept course 239° to cross SAAMS at or below 7000, then on track 313° to cross BSLNE at or below 9000, then on track 313° to FDRCH, then on track 313° to MTRCT, thence....

TAKEOFF RUNWAY 22R: Climb on heading 216° to intercept course 238° to cross SAAMS at or below 7000, then on track 313° to cross BSLNE at or below 9000, then on track 313° to FDRCH, then on track 313° to MTRCT, thence....

TAKEOFF RUNWAYS 27L/R: Climb on heading 276° or as assigned by ATC, for RADAR vectors to MTRCT, thence....

....on track 279° to KAYLN, then on (transition). Maintain 17000, expect filed altitude 10 minutes after departure.

SMUUV TRANSITION (KAYLN3.SMUUV):

EC-1, 20 FEB 2025 to 20 MAR 2025

EC-1, 20 FEB 2025 to 20 MAR 2025