

WAAS CH <b>53300</b> <b>W27B</b>	APP CRS <b>276°</b>	Rwy Idg TDZE Apt Elev	<b>8500</b> <b>630</b> <b>645</b>
--	------------------------	-----------------------------	---

# RNAV (GPS) RWY 27L

DETROIT METRO WAYNE COUNTY (DTW)

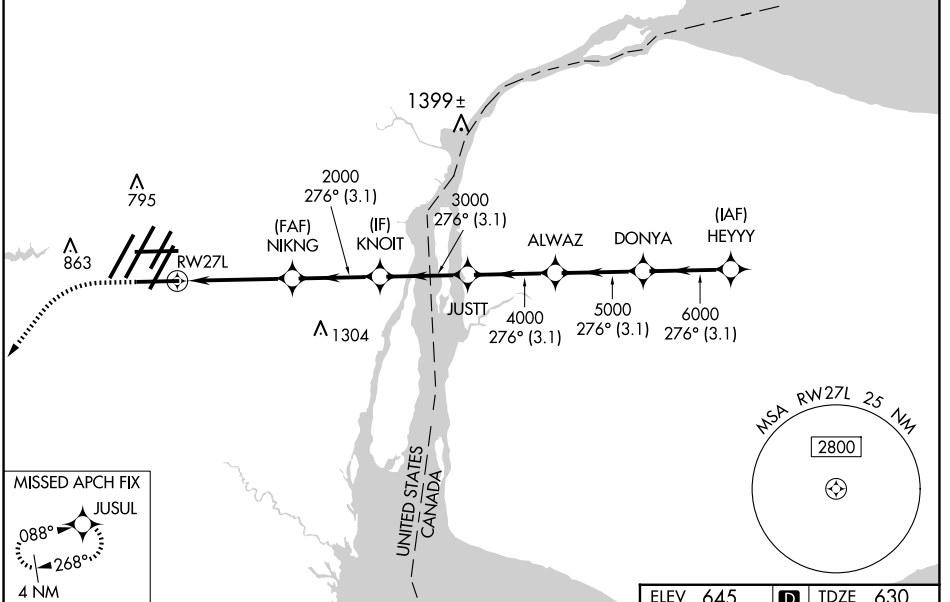
**RNP APCH.**

▼ For uncompensated Baro-VNAV systems, LNAV/VNAV NA below -19°C (-2°F) or above 54°C (130°F). Simultaneous approach authorized. LNAV procedure NA during simultaneous operations. Use of FD or AP required during simultaneous operations. For inop ALS, increase LNAV/VNAV all Cats visibility to RVR 5000. \*\* RVR 1800 authorized with use of FD or AP or HUD to DA.

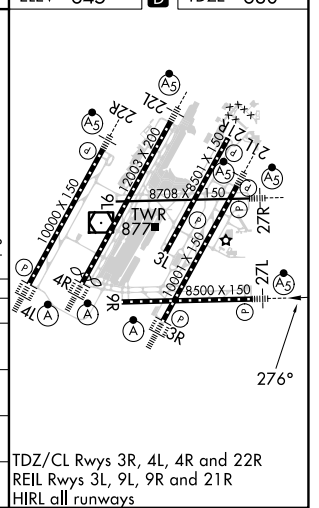
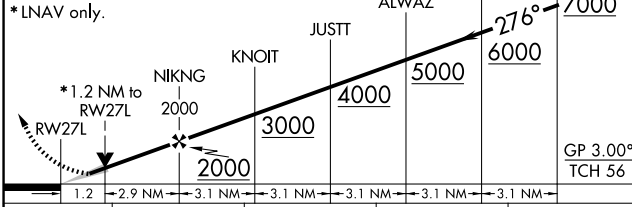
MALS R

MISSED APPROACH: Climb to 1100 then climbing left turn to 4000 direct JUSUL and hold.

D-ATIS <b>133.675</b>	DETROIT APP CON <b>124.05 284.0</b>	METRO TOWER <b>128.75 317.725</b>	GND CON <b>121.8 (NW) 119.45 (NE)</b> <b>132.725 (SW) 119.25 (SE)</b>	CLNC DEL <b>120.65</b>	CPDLC
--------------------------	--	--------------------------------------	---	---------------------------	-------



ELEV 645	<b>D</b>	TDZE 630
----------	----------	----------



CATEGORY	A	B	C	D
LPV DA**		830/24	200 (200-½)	
LNAV/VNAV DA		958/30	328 (400-⅝)	
LNAV MDA	1080/24	450 (500-½)	1080/45	450 (500-⅞)
<b>C</b> CIRCLING	1180-1	535 (600-1)	1180-1½ 535 (600-1½)	1240-2 595 (600-2)

TDZ/CL Rwy 3R, 4L, 4R and 22R  
REIL Rwy 3L, 9L, 9R and 21R  
HIRL all runways

EC-1, 20 FEB 2025 to 20 MAR 2025

EC-1, 20 FEB 2025 to 20 MAR 2025