

DETROIT, MICHIGAN

AL-119 (FAA)

# RNAV (GPS) PRM Z RWY 4R (CLOSE PARALLEL)

DETROIT METRO WAYNE COUNTY (DTW)

|  |                        |  |
|--|------------------------|--|
| WAAS<br>CH <b>87139</b><br><b>W04B</b> | APP CRS<br><b>036°</b> | Rwy Idg <b>11494</b><br>TDZE <b>640</b><br>Apt Elev <b>645</b> |
|--|------------------------|--|

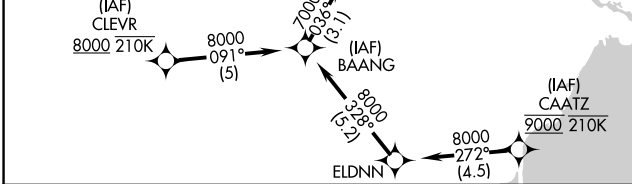
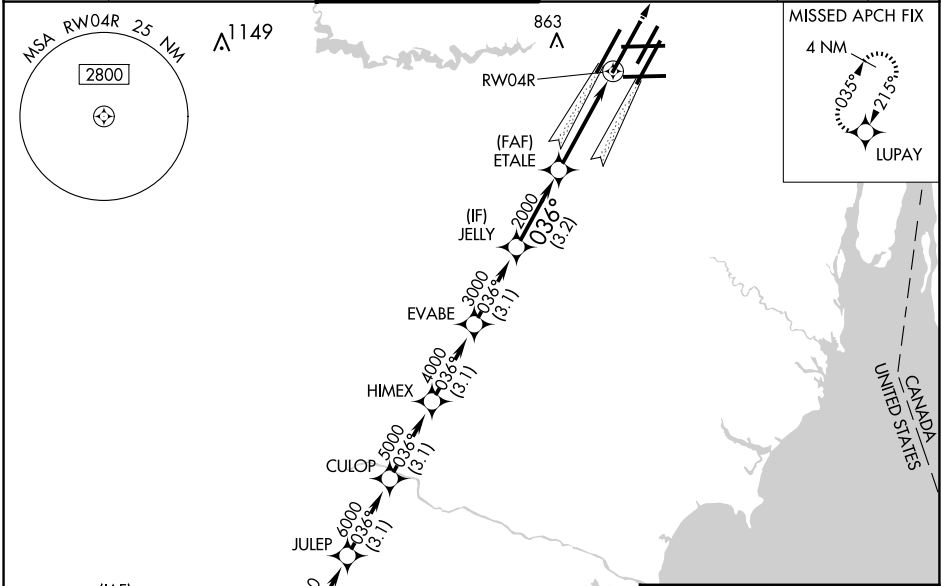
RNP APCH.

**▽** For uncompensated Baro-VNAV systems, LNAV/VNAV NA below -19°C or above 54°C. Simultaneous approach authorized. Use of FD or AP required during simultaneous operations. Dual VHF comm required. See additional requirements on AAUP.

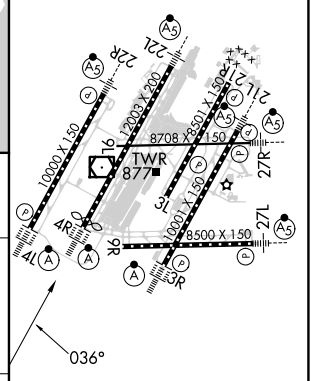
ALS-2

MISSED APPROACH:  
Climb to 4000 direct LUPAY and hold.

|                          |  |   |   |                           |       |
|--------------------------|--|---|---|---------------------------|-------|
| D-ATIS<br><b>133.675</b> | DETROIT APP CON<br><b>124.05 284.0</b> | METRO TOWER<br><b>128.125 317.725</b><br><b>PRM 135.775</b> | GND CON<br><b>121.8 (NW) 119.45 (NE)</b><br><b>132.725 (SW) 119.25 (SE)</b> | CINC DEL<br><b>120.65</b> | CPDLC |
|--------------------------|--|---|---|---------------------------|-------|



ELEV 645 **D** TDZE 640



|                 |        |        |        |        |        |        |        |
|-----------------|--------|--------|--------|--------|--------|--------|--------|
| BAANG           | JULEP  | CULOP  | HIMEX  | EVABE  | JELLY  | ETALE  | RWY 4R |
| 8000            | 7000   | 6000   | 5000   | 4000   | 3000   | 2000   | 1000   |
| GP 3.00° TCH 52 |        |        |        |        |        |        |        |
| 3.1 NM          | 3.1 NM | 3.1 NM | 3.1 NM | 3.1 NM | 3.2 NM | 4.1 NM |        |
| A               |        | B      |        | C      |        | D      |        |

|              |  |  |         |  |             |  |  |
|--------------|--|--|---------|--|-------------|--|--|
| CATEGORY     |  |  |         |  |             |  |  |
| LPV DA       |  |  | 840/18  |  | 200 (200-½) |  |  |
| LNAV/VNAV DA |  |  | 1021/35 |  | 381 (400-¾) |  |  |

TDZ/CL Rwy 3R, 4L, 4R and 22R  
REL Rwy 3L, 9L, 9R and 21R  
HIRL all runways

DETROIT, MICHIGAN  
Amdt 1A 28FEB19

42°13'N-83°21'W  
**RNAV (GPS) PRM Z RWY 4R (CLOSE PARALLEL)**

DETROIT METRO WAYNE COUNTY (DTW)

EC-1, 20 FEB 2025 to 20 MAR 2025

EC-1, 20 FEB 2025 to 20 MAR 2025