

APP CRS	Rwy Idg	10000
216°	TDZE	642
	Apt Elev	645

RNAV (RNP) W RWY 22R

DETROIT METRO WAYNE COUNTY (DTW)

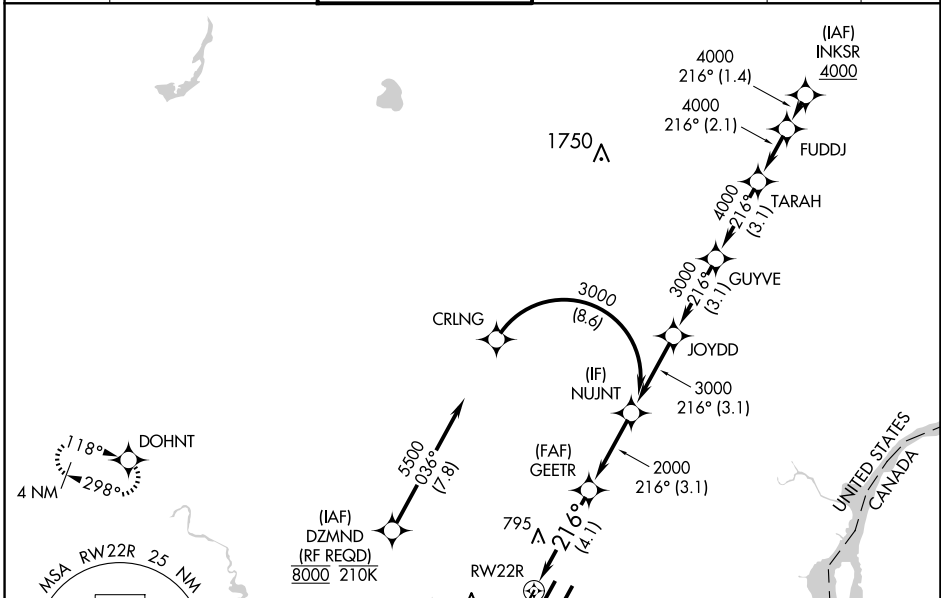
RNP AR APCH.

▼ For uncompensated Baro-VNAV systems, procedure NA below -19°C or above 54°C. Simultaneous approach authorized. For inop ALS, increase RNP 0.30 all Cats visibility to RVR 5500.



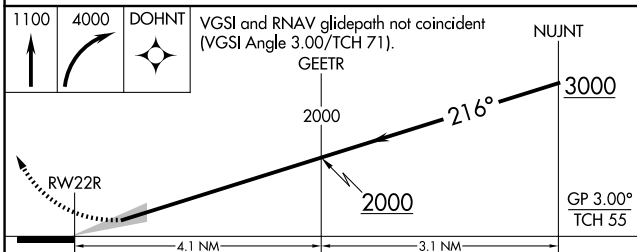
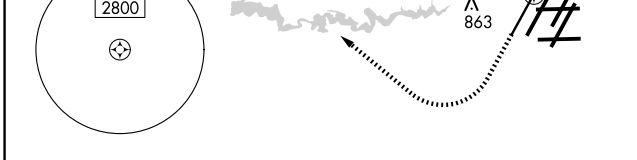
MISSED APPROACH: Climb to 1100 then climbing right turn to 4000 direct DOHNT and hold, continue climb-in-hold to 4000.

D-ATIS	DETROIT APP CON	METRO TOWER	GND CON	CINC DEL	CPDLC
133.675	124.05 284.0	135.0 317.725	121.8 (NW) 119.45 (NE) 132.725 (SW) 119.25 (SE)	120.65	

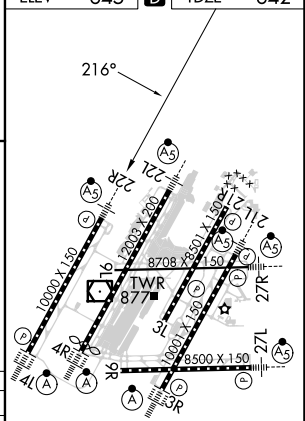


EC-1, 20 FEB 2025 to 20 MAR 2025

EC-1, 20 FEB 2025 to 20 MAR 2025



ELEV	645	TDZE	642
------	-----	------	-----



CATEGORY	A	B	C	D
RNP 0.30 DA	987/30 345 (400-5/8)			

AUTHORIZATION REQUIRED

TDZ/CL Rwsy 3R, 4L, 4R, and 22R
REIL Rwsy 3L, 9L, 9R, and 21R
HIRL all runways