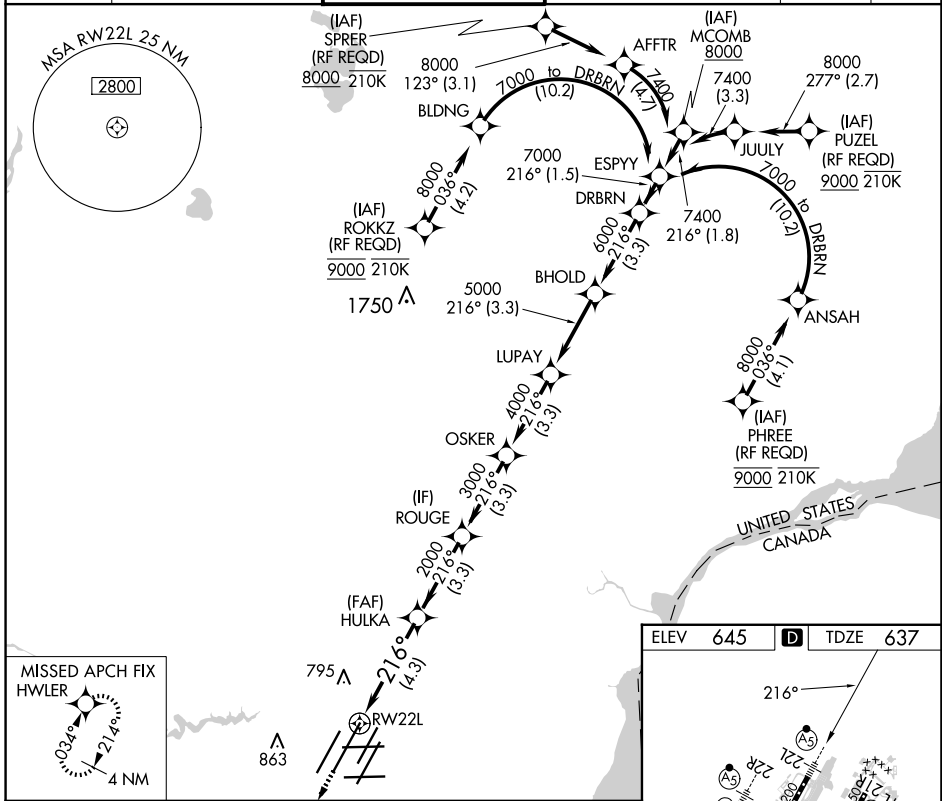


APP CRS	Rwy Idg	12003
216°	TDZE	637
	Apt Elev	645

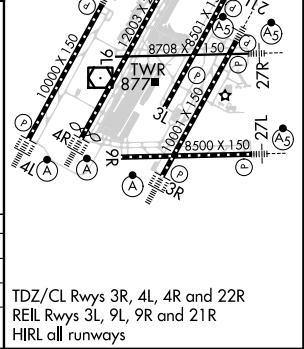
RNAV (RNP) X RWY 22L

DETROIT METRO WAYNE COUNTY (DTW)

RNP AR APCH.		METRO TOWER 128.125 317.725		GND CON 121.8 (NW) 119.45 (NE) 132.725 (SW) 119.25 (SE)		MALS R	MISSED APPROACH: Climb to 4000 direct HWLER and hold.
▼ For uncompensated Baro-VNAV systems, procedure NA below -10°C (14°F) or above 54°C (130°F). Simultaneous approach authorized. For inop ALS, increase RNP 0.15 all Cats visibility to RVR 4500 and RNP 0.30 all Cats visibility to RVR 6000.							
D-ATIS 133.675	DETROIT APP CON 124.05 284.0					CLNC DEL 120.65	CPDLC



4000	HWLER	DRBRN				
		7000				
		HULKA	ROUGE	OSKER	LUPAY	BHOLD
		2000	3000	4000	5000	6000
		4.3 NM	3.3 NM	3.3 NM	3.3 NM	3.3 NM
RW22L		GP 2.85° TCH 60				
CATEGORY	A	B	C	D		
RNP 0.15 DA	941/24		304 (300-½)			
RNP 0.30 DA	1040/40		403 (400-¾)			



AUTHORIZATION REQUIRED

TDZ/CL Rws 3R, 4L, 4R and 22R
REIL Rws 3L, 9L, 9R and 21R
HIRL all runways

EC-1, 20 FEB 2025 to 20 MAR 2025

EC-1, 20 FEB 2025 to 20 MAR 2025