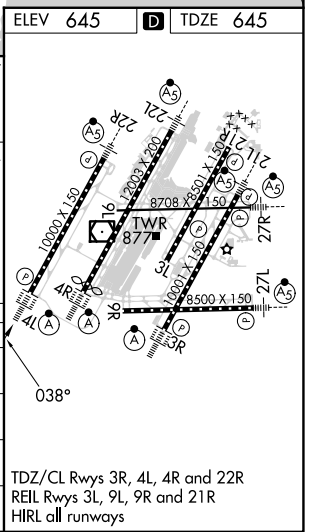
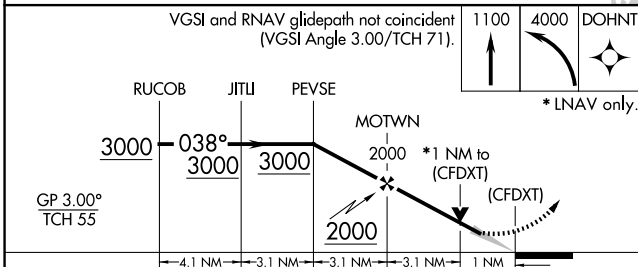
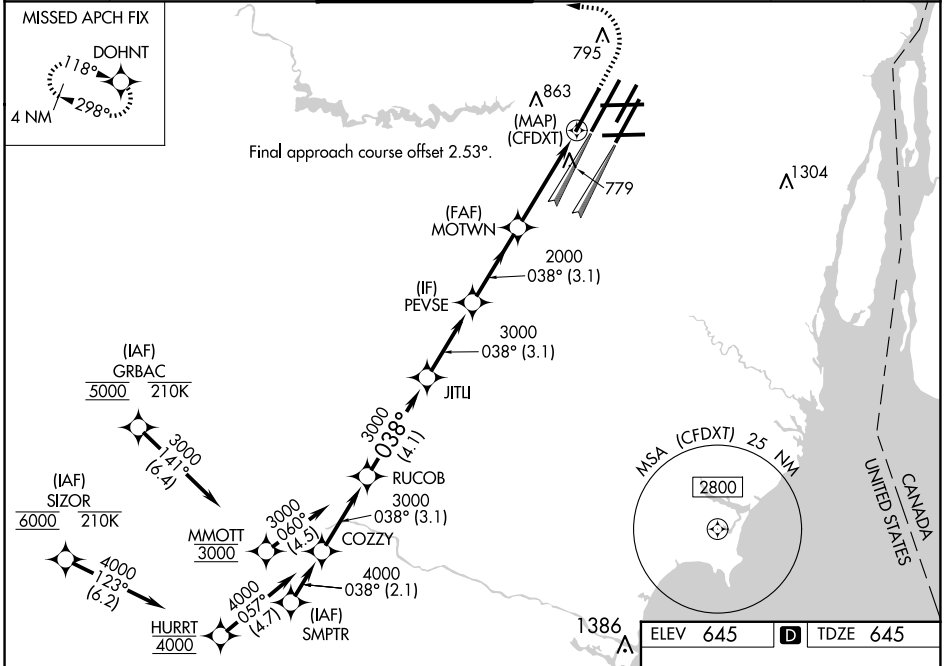


WAAS CH <b>82439</b> <b>W04A</b>	APP CRS <b>038°</b>	Rwy Idg <b>10000</b> TDZE <b>645</b> Apt Elev <b>645</b>
--	------------------------	--

# RNAV (GPS) Y RWY 4L

DETROIT METRO WAYNE COUNTY (DTW)

RNP APCH. ▼ Simultaneous approach authorized. LNAV procedure NA during simultaneous operations. Use of FD or AP required during simultaneous operations. For uncompensated Baro-VNAV systems, LNAV/VNAV NA below -19°C or above 54°C.		ALSF-2 	MISSED APPROACH: Climb to 1100 then climbing left turn to 4000 direct DOHNT and hold.		
D-ATIS <b>133.675</b>	DETROIT APP CON <b>124.05 284.0</b>	METRO TOWER <b>135.0 317.725</b>	GND CON <b>121.8 (NW) 119.45 (NE)</b> <b>132.725 (SW) 119.25 (SE)</b>	CLNC DEL <b>120.65</b>	CPDLC



CATEGORY	A	B	C	D
LPV DA		895/24	250 (300-½)	
LNAV/VNAV DA		1068/45	423 (500-¾)	
LNAV MDA	1040/24	395 (400-½)	1040/35	395 (400-¾)
CIRCLING	1180-1	535 (600-1)	1180-1½ 535 (600-1½)	1240-2 595 (600-2)

TDZ/CL Rwys 3R, 4L, 4R and 22R  
REL Rwys 3L, 9L, 9R and 21R  
HIRL all runways

EC-1, 20 FEB 2025 to 20 MAR 2025

EC-1, 20 FEB 2025 to 20 MAR 2025