

WAAS CH <b>70642</b> <b>W22D</b>	APP CRS <b>216°</b>	Rwy Idg TDZE <b>642</b> Apt Elev <b>645</b>	<b>10000</b>
----------------------------------------	------------------------	---------------------------------------------------	--------------

# RNAV (GPS) Z RWY 22R

DETROIT METRO WAYNE COUNTY (DTW)

RNP APCH.

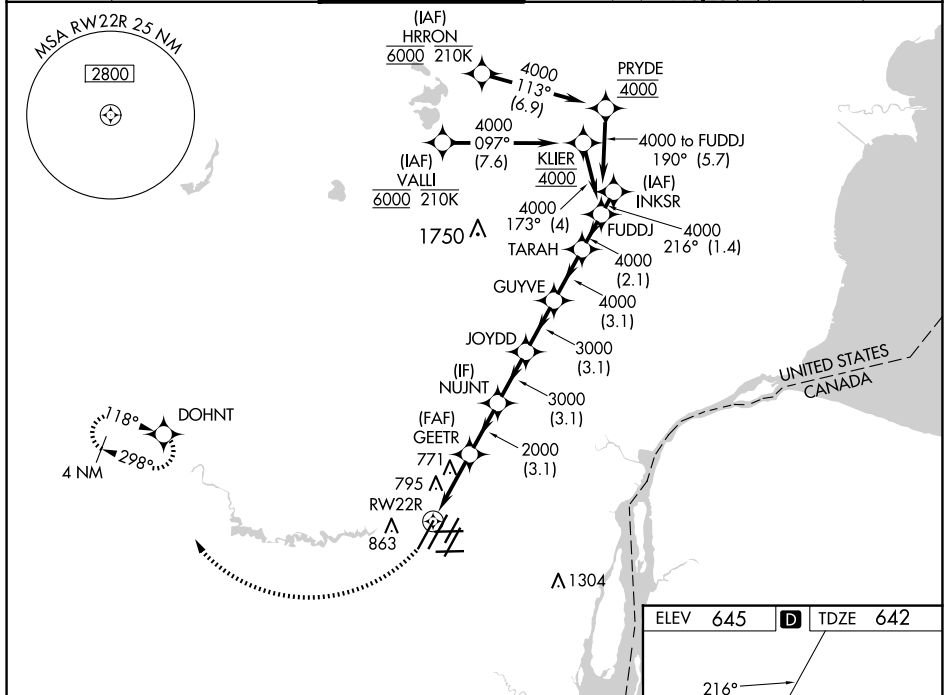
Simultaneous approach authorized. Use of FD or AP required during simultaneous operations. LNAV procedure NA during simultaneous operations. For uncompensated Baro-VNAV systems, LNAV/VNAV NA below -1°C or above 54°C. For inop ALS, increase LNAV/VNAV all Cats visibility to RVR 4500.

MALSR

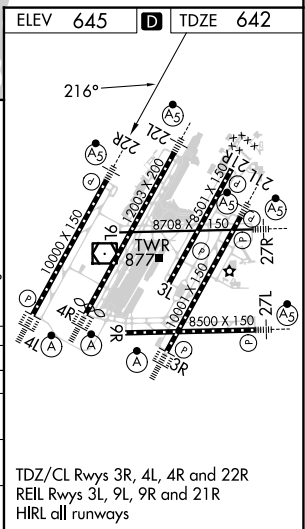


MISSED APPROACH: Climb to 1100 then climbing right turn 4000 direct DOHNT and hold, continue climb in hold to 4000.

D-ATIS <b>133.675</b>	DETROIT APP CON <b>124.05 284.0</b>	METRO TOWER <b>128.125 317.725</b>	GND CON <b>121.8</b> (NW) <b>119.45</b> (NE) <b>132.725</b> (SW) <b>119.25</b> (SE)	CLNC DEL <b>120.65</b>	CPDLC
--------------------------	----------------------------------------	---------------------------------------	-------------------------------------------------------------------------------------------	---------------------------	-------



1100	4000	DOHNT	VGSi and RNAV glidepath not coincident (VGSi Angle 3.00/ TCH 71)	
*LNAV only.				
RW22R				
1 NM	3.1 NM	3.1 NM	3.1 NM	2.1 NM
GEETR 2000	NUJNT JOYDD 3000 3000	GUYVE TARAH 4000 4000	FUDDJ 4000	
2000		216°		
GP 3.00°		TCH 55'		
CATEGORY	A	B	C	D
LPV DA	842/18		200 (200-½)	
LNAV/VNAV DA	948/24		306 (400-½)	
LNAV MDA	1040/24 398 (400-½)		1040/35 398 (400-¾)	
CIRCLING	1180-1 535 (600-1)		1180-1½ 595 (600-2)	



TDZ/CL Rwsy 3R, 4L, 4R and 22R  
REIL Rwsy 3L, 9L, 9R and 21R  
HIRL all runways

EC-1, 20 FEB 2025 to 20 MAR 2025

EC-1, 20 FEB 2025 to 20 MAR 2025