

# TRMML FOUR DEPARTURE (RNAV) Departure Routes

**TOP ALTITUDE:  
17000**



DETROIT DEP CON  
 125.525 284.0 (Rwys 22L/R, 27L/R)  
 132.025 284.0 (Rwys 3L/R, 4L/R, 21L/R)  
 D-ATIS 118.125  
 CLNC DEL 120.65  
 CPDLC  
 GND CON  
 121.8 (NW) 119.45 (NE)  
 132.725 (SW) 119.25 (SE)  
 METRO TOWER  
 118.4 317.725 (Rwys 3L/R, 21L/R, 27R)  
 128.75 317.725 (Rwy 27L)  
 135.0 317.725 (Rwys 4L/R, 22L/R)

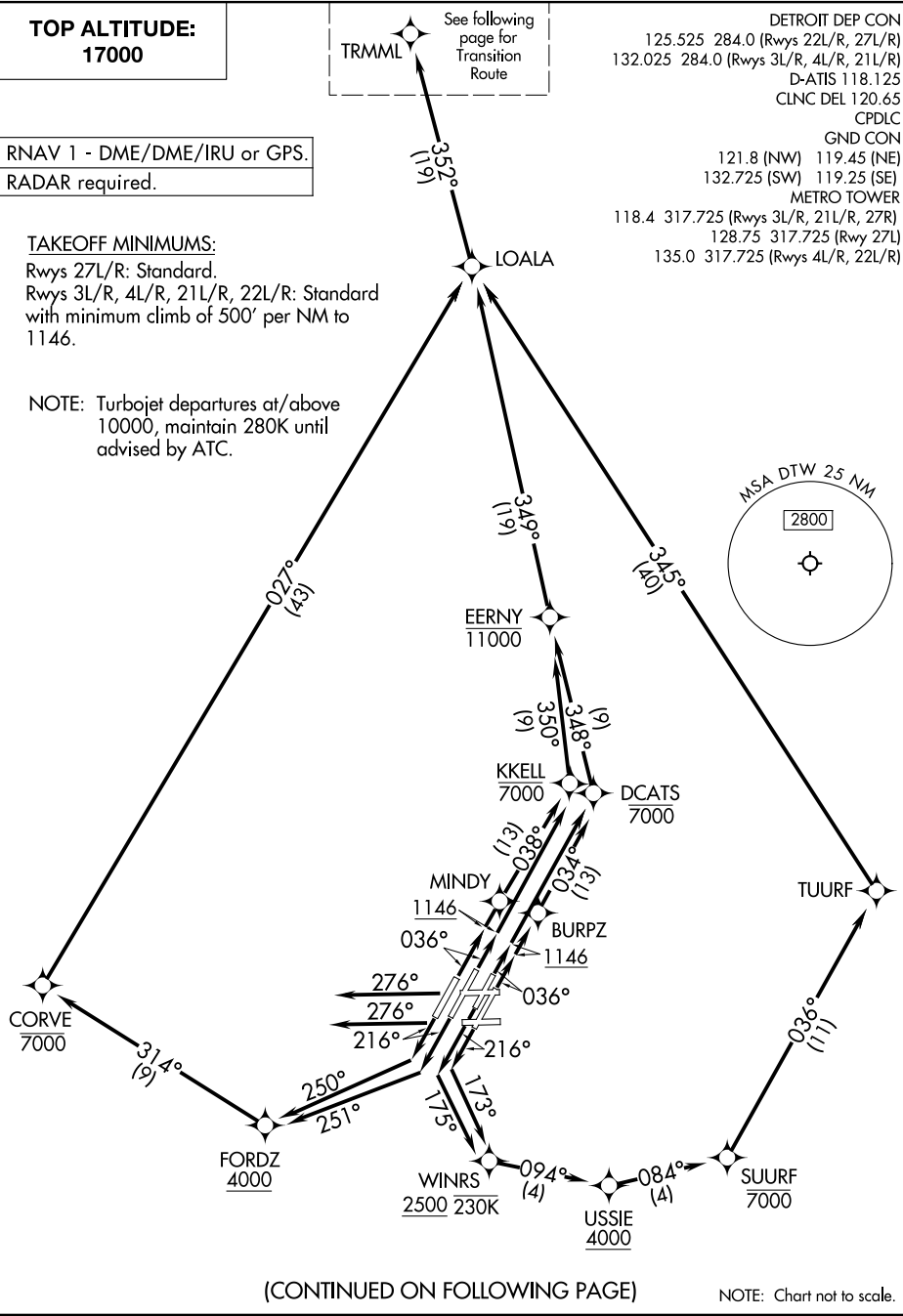
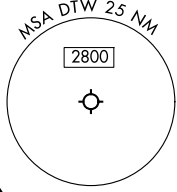
RNAV 1 - DME/DME/IRU or GPS.

RADAR required.

**TAKEOFF MINIMUMS:**

Rwys 27L/R: Standard.  
 Rwys 3L/R, 4L/R, 21L/R, 22L/R: Standard  
 with minimum climb of 500' per NM to  
 1146.

NOTE: Turbojet departures at/above  
 10000, maintain 280K until  
 advised by ATC.



(CONTINUED ON FOLLOWING PAGE)

NOTE: Chart not to scale.

EC-1, 20 FEB 2025 to 20 MAR 2025

EC-1, 20 FEB 2025 to 20 MAR 2025

# TRMML FOUR DEPARTURE (RNAV) Transition Route

<b>TOP ALTITUDE:</b> <b>17000</b>	<p style="text-align: center;">GNZOE 10000 *2700 352° (111) DDEEZ 10000 *2700 352° (121) TRMML</p>	DETROIT DEP CON 125.525 284.0 (Rwys 22L/R, 27L/R) 132.025 284.0 (Rwys 3L/R, 4L/R, 21L/R) D-ATIS 118.125 CLNC DEL 120.65 CPDLC GND CON 121.8 (NW) 119.45 (NE) 132.725 (SW) 119.25 (SE) METRO TOWER 118.4 317.725 (Rwys 3L/R, 21L/R, 27R) 128.75 317.725 (Rwy 27L) 135.0 317.725 (Rwys 4L/R, 22L/R)
RNAV 1 - DME/DME/IRU or GPS.		
RADAR required.		
<p>MSA DTW 25 NM 2800</p>		
NOTE: Chart not to scale.		
		NOTE: Turbojet departures at/above 10000, maintain 280K until advised by ATC. NOTE: See additional requirements on AAUP.

## DEPARTURE ROUTE DESCRIPTION

SEE ADDITIONAL REQUIREMENTS IN RNAV DEPARTURE AAUP.

**TAKEOFF RUNWAY 3L:** Climb on heading 036° to 1146, then direct to cross DCATS at or below 7000, then on track 348° to cross EERNY at or below 11000, then on track 349° to LOALA, thence....

**TAKEOFF RUNWAY 3R:** Climb on heading 036° to 1146, then direct BURPZ, then on track 034° to cross DCATS at or below 7000, then on track 348° to cross EERNY at or below 11000, then on track 349° to LOALA, thence....

**TAKEOFF RUNWAY 4L:** Climb on heading 036° to 1146, then direct MINDY, then on track 038° to cross KKELL at or below 7000, then on track 350° to cross EERNY at or below 11000, then on track 349° to LOALA, thence....

**TAKEOFF RUNWAY 4R:** Climb on heading 036° to 1146, then direct to cross KKELL at or below 7000, then on track 350° to cross EERNY at or below 11000, then on track 349° to LOALA, thence....

**TAKEOFF RUNWAY 21L:** Climb on heading 216° to intercept course 173° to cross WINRS at or above 2500 and at or below 230K, then on track 094° to cross USSIE at or above 4000, then on track 084° to cross SUURF at or below 7000, then on track 036° to TUURF, then on track 345° to LOALA, thence....

**TAKEOFF RUNWAY 21R:** Climb on heading 216° to intercept course 175° to cross WINRS at or above 2500 and at or below 230K, then on track 094° to cross USSIE at or above 4000, then on track 084° to cross SUURF at or below 7000, then on track 036° to TUURF, then on track 345° to LOALA, thence....

**TAKEOFF RUNWAY 22L:** Climb on heading 216° to intercept course 251° to cross FORDZ at or above 4000, then on track 314° to cross CORVE at or below 7000, then on track 027° to LOALA, thence....

**TAKEOFF RUNWAY 22R:** Climb on heading 216° to intercept course 250° to cross FORDZ at or above 4000, then on track 314° to cross CORVE at or below 7000, then on track 027° to LOALA, thence....

**TAKEOFF RUNWAY 27L/R:** Climb on heading 276° or as assigned by ATC, for RADAR vectors to LOALA, thence....

...on track 352° to TRMML, then on (transition). Maintain 17000, expect filed altitude 10 minutes after departure.

GNZOE TRANSITION (TRMML4.GNZOE)