

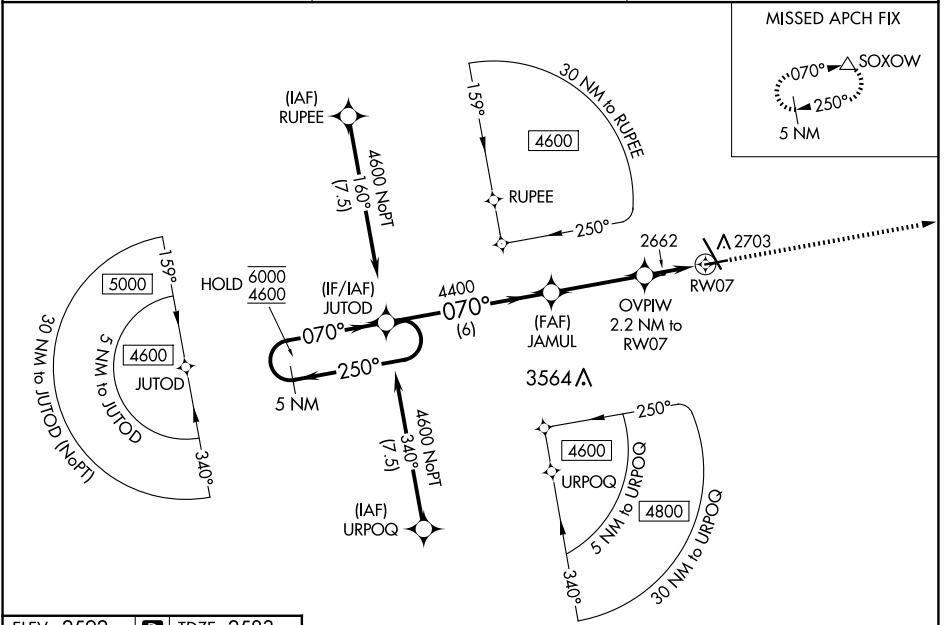
WAAS CH 90544 W07A	APP CRS 070°	Rwy ldg 4700 TDZE 2583 Apt Elev 2592
--	------------------------	---

RNAV (GPS) RWY 7

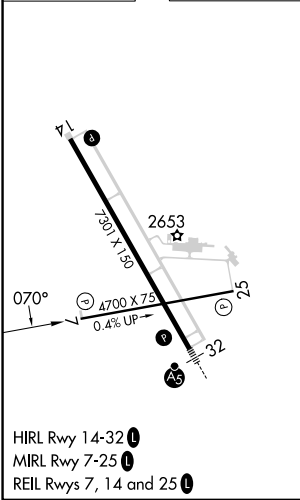
DICKINSON/THEODORE ROOSEVELT RGNL (DIK)

RNP APCH - GPS.	MISSED APPROACH: Climb to 4600 direct SOXOW and hold.
-----------------	---

ASOS 118.375	MINNEAPOLIS CENTER 124.25 236.825	UNICOM 123.0 (CTAF) 0
------------------------	---	---------------------------------



ELEV 2592	D	TDZE 2583
------------------	----------	------------------



VGSI and RNAV glidepath not coincident (VGSI Angle 3.00/TCH 27).

5 NM Holding Pattern	JUTOD	JAMUL	OVPW	SOXOW
6000 ← 250°	4600 → 070°	4400	3320	4600 ↑
GP 3.00°				△
TCH 45				
	6 NM	3.4 NM	1.2 NM	1 NM
CATEGORY	A	B	C	D
LPV DA		2833-1	250 (300-1)	
LNAV/VNAV DA		2833-1	250 (300-1)	
LNAV MDA		2920-1	337 (400-1)	
CIRCLING	3060-1	468 (500-1)	3120-1½ 528 (600-1½)	3200-2 608 (700-2)

RNAV (GPS) RWY 7

NC-1, 20 FEB 2025 to 20 MAR 2025

NC-1, 20 FEB 2025 to 20 MAR 2025