

VORTAC DIK 112.9 Chan 76	APP CRS 183°	Rwy ldg TDZE Apt Elev 2592	N/A N/A
--	------------------------	--	--------------------------

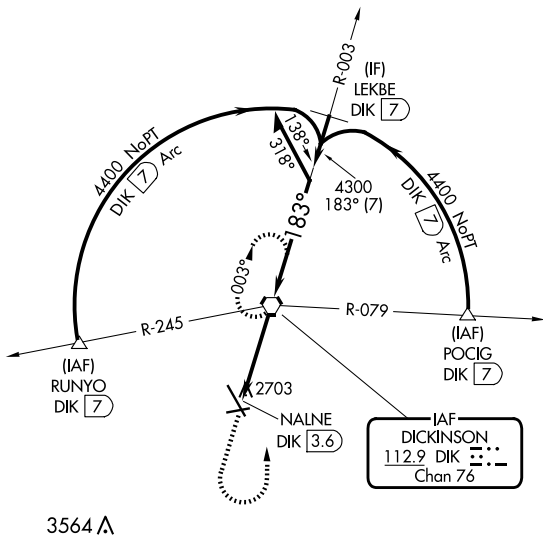
VOR-A

DICKINSON/THEODORE ROOSEVELT RGNL (DIK)

⚠ When local altimeter setting not received, use Bowman altimeter setting and increase all MDAs 280 feet, increase Circling Cat C visibility ¼ SM, Cat D visibility 1 SM.

MISSED APPROACH: Climb to 4600 then turn left direct DIK VORTAC and hold.

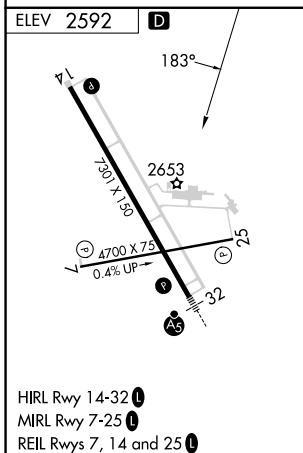
ASOS 118.375	MINNEAPOLIS CENTER 124.25 236.825	UNICOM 123.0 (CTAF) 0
------------------------	---	---------------------------------



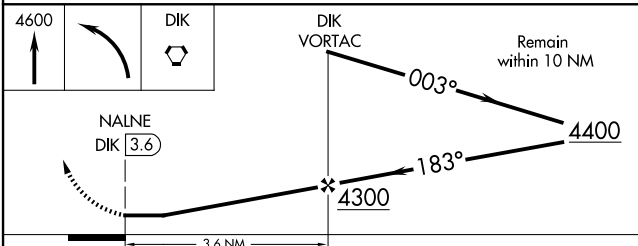
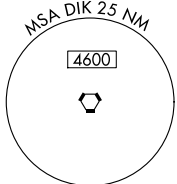
3564 **Δ**

NC-1, 20 FEB 2025 to 20 MAR 2025

NC-1, 20 FEB 2025 to 20 MAR 2025



HIRL Rwy 14-32 **0**
MIRL Rwy 7-25 **0**
REIL Rws 7, 14 and 25 **0**



FAF to MAP 3.6 NM					CATEGORY	A	B	C	D
Knots	60	90	120	150	180	3080-1 488 (500-1)	3100-1 508 (600-1)	3120-1½ 528 (600-1½)	3220-2 628 (700-2)
Min:Sec	3:36	2:24	1:48	1:26	1:12	0 CIRCLING			

DICKINSON, NORTH DAKOTA
Amdt 6A 23APR20

DICKINSON/THEODORE ROOSEVELT RGNL (DIK)
46°48'N-102°48'W

VOR-A