

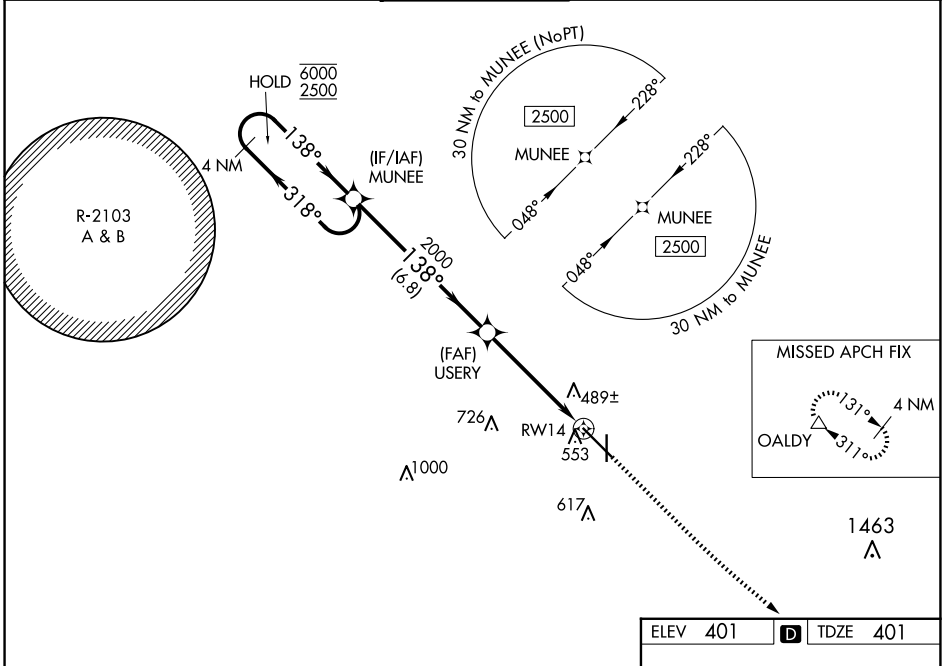
WAAS CH 86504 W14A	APP CRS 138°	Rwy ldg 8496 TDZE 401 Apt Elev 401
----------------------------------------	------------------------	---------------------------------------------------------------

RNAV (GPS) RWY 14

DOTHAN RGNL (DHN)

RNP APCH - GPS.		MISSED APPROACH: Climb to 900 then climbing left turn to 3000 direct OALDY and hold.		
<p>▼ For uncompensated Baro-VNAV systems, LNAV/VNAV NA below -3°C or above 54°C. Intense student helicopter pilot training in vicinity of airport.</p>				

ATIS 135.725	CAIRNS APP CON * 125.4 327.125	DOTHAN TOWER * 118.4 (CTAF) 0 257.6	GND CON 121.7 348.6	UNICOM 122.95
------------------------	------------------------------------------	-----------------------------------------------	-------------------------------	-------------------------



SE-4, 20 FEB 2025 to 20 MAR 2025

SE-4, 20 FEB 2025 to 20 MAR 2025

4 NM Holding Pattern		VGSIs and RNAV glidepath not coincident (VGSi Angle 3.00/TCH 40).		900	3000	OALDY
MUNEE		USERY		↑	↶	△
6000 ← 318° 2500 → 138°		2000		1.2 NM to RWY 14 RWY 14		
GP 3.00° TCH 54		2000		1.2 NM to RWY 14 RWY 14		
6.8 NM		3.7 NM		1.2 NM		
CATEGORY	A	B	C	D		
LPV DA	601-3/4		200 (200-3/4)			
LNAV/VNAV DA	724-1		323 (400-1)			
LNAV MDA	820-1	419 (500-1)	820-1 1/8	419 (500-1 1/8)		
CIRCLING	860-1	459 (500-1)	920-1 1/2	1040-2	639 (700-2)	

ELEV 401	D	TDZE 401
----------	----------	----------

This diagram shows the runway (RWY 14) and taxiway (TAXI 36) layout. The runway is 8496 ft long and 100 ft wide. The taxiway is 5498 ft long and 36 ft wide. The tower (TWR) is located at 492 ft elevation. The runway is oriented 138° to RWY 14. A 3.00° glide path is indicated. The diagram also shows the location of the tower and the runway end.