

HI-TACAN Z RWY 9

TACAN LKI Chan 11	APCH CRS 087°	Rwy ldg 10,062 TDZE 1428 Arprt Elev 1428
----------------------	------------------	--

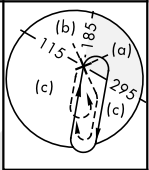
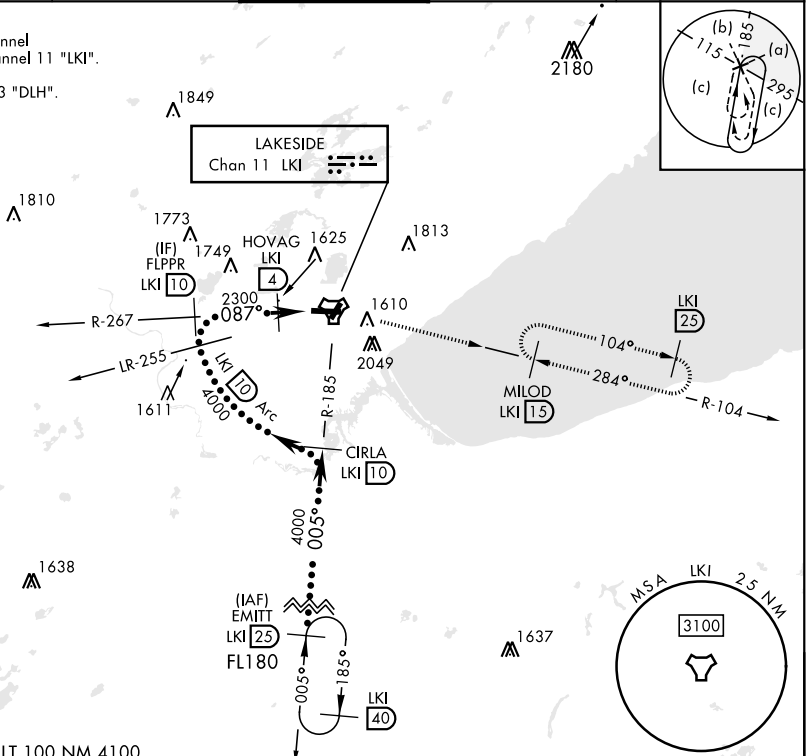
[USAF]

DULUTH INTL (KDLH)

RADAR required for procedure entry.		ALSF-2	MISSED APPROACH: Climb to 2500 then climbing right turn to 4000 on LKI TACAN R-104 to MILOD (15 DME) and hold.
* When ALS inop, increase CAT E vis to 1 3/8 miles. ** Circling NA for CAT DE SE of Rwy 3 and 27.			

ATIS 124.1 270.1	APP CON 125.45 233.7	TOWER 118.3 257.8	GND CON 121.9 348.6	ASR
---------------------	-------------------------	----------------------	------------------------	-----

CAUTION:
Do not select channel 73 "DLH" for channel 11 "LKI".
Towers 2049" on R-099 channel 73 "DLH".



NC-1, 20 FEB 2025 to 20 MAR 2025

NC-1, 20 FEB 2025 to 20 MAR 2025

EMERG SAFE ALT 100 NM 4100

VGS1 and descent angles not coincident (VGS1 Angle 3.00/TCH 70).		2500	4000	MILOD LKI 15	ELEV 1428 TDZE 1428
				LKI R-104	Rwy 9 ldg 10,062' Rwy 27 ldg 10,062'
CATEGORY	C	D	E		
S-9*	1880/45	452	(500-1)		
CIRCLING**	1940-1 1/2 512 (600-1 1/2)	2020-2 592 (600-2)	2060-2 1/4 632 (700-2 1/4)	HIRL Rwy 9-27 MIRL Rwy 3-21 REIL Rwy 3 and 21 TDZL/CL Rwy 9-27	

HI-TACAN Z RWY 9