

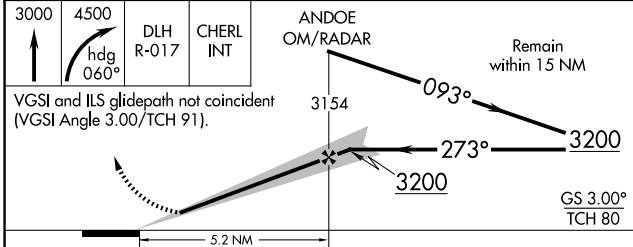
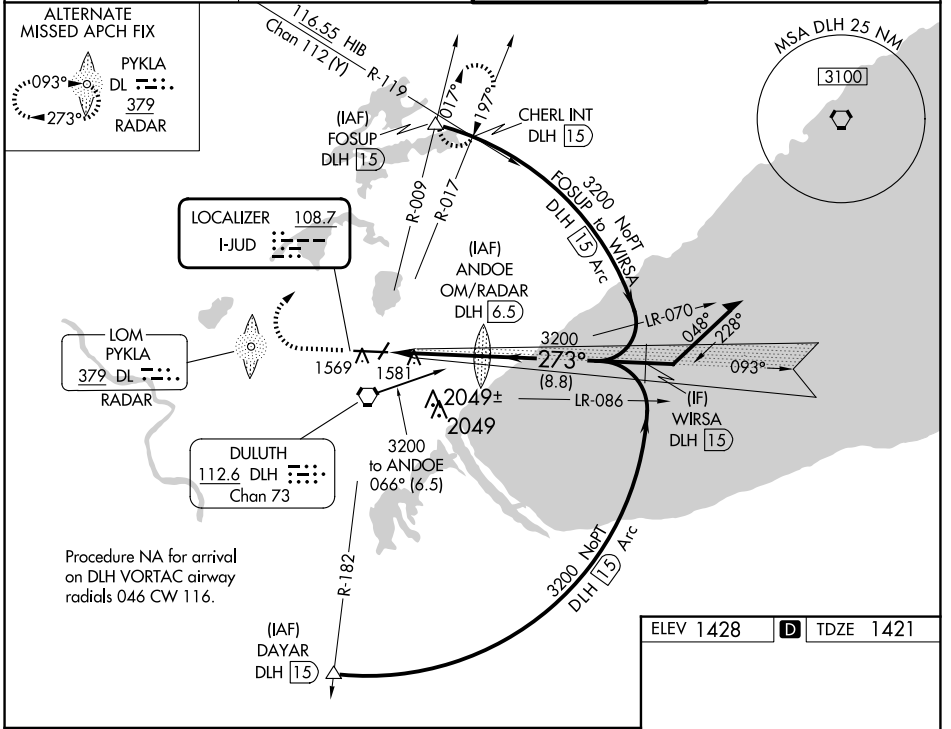
LOC I-JUD <b>108.7</b>	APP CRS <b>273°</b>	Rwy ldg <b>10062</b> TDZE <b>1421</b> Apt Elev <b>1428</b>
---------------------------	------------------------	--

# ILS or LOC RWY 27

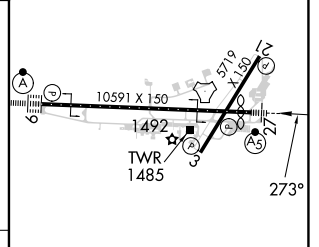
DULUTH INTL (DLH)

DME or RADAR required for procedure entry.		MALSR 	MISSED APPROACH: Climb to 3000 then climbing right turn to 4500 on heading 060° and DLH VORTAC R-017 to CHERL INT/ DLH 15 DME and hold.
	Circling NA for Cat E southeast of Rws 3 and 27. Inop table does not apply to S-ILS 27. For inop ALS, increase S-LOC 27 Cat E visibility to 1 1/4 SM.		

ATIS <b>124.1 270.1</b>	DULUTH APP CON <b>125.45 233.7</b>	DULUTH TOWER <b>118.3 257.8</b>	GND CON <b>121.9 348.6</b>
----------------------------	---------------------------------------	------------------------------------	-------------------------------



ELEV 1428	<b>D</b> TDZE 1421
-----------	--------------------



CATEGORY	A	B	C	D	E
S-ILS 27	1621/40	200 (200-3/4)	1651/40	230 (300-3/4)	
S-LOC 27	1860/24	439 (500-1/2)	1860/40	439 (500-3/4)	
CIRCLING	1880-1 452 (500-1)	1900-1 472 (500-1)	1940-1 1/2 512 (600-1 1/2)	2400-3	972 (1000-3)

TDZ/CL Rwy 9					
REIL Rws 3 and 21					
HIRL Rws 9-27					
MIRL Rws 3-21					
FAF to MAP 5.2 NM					
Knots	60	90	120	150	180
Min:Sec	5:12	3:28	2:36	2:05	1:44

NC-1, 20 FEB 2025 to 20 MAR 2025

NC-1, 20 FEB 2025 to 20 MAR 2025