

APP CRS	Rwy Idg	4347
032°	TDZE	1972
	Apt Elev	1987

RNAV (GPS) RWY 5

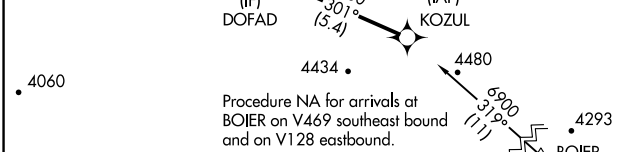
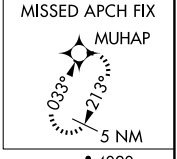
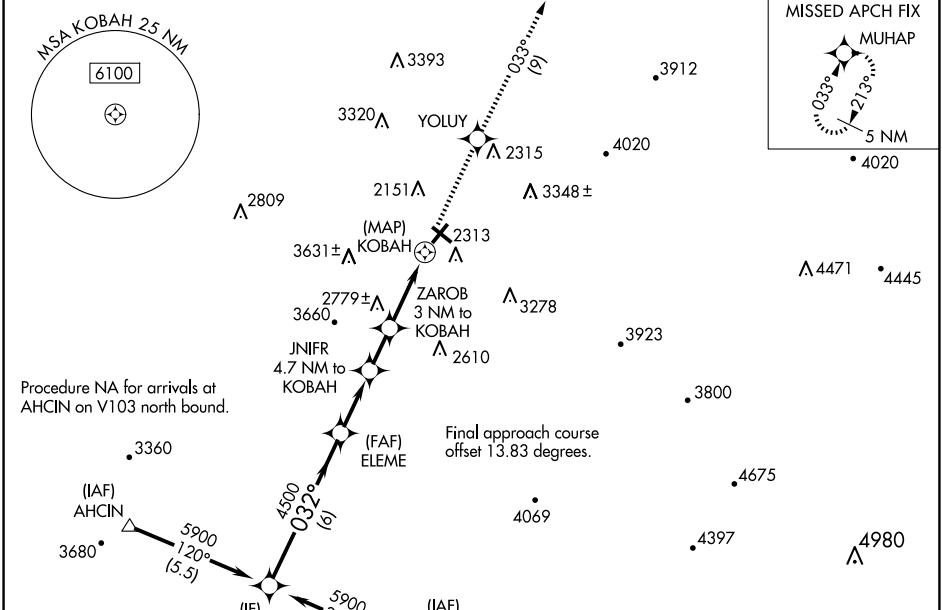
ELKINS/RANDOLPH COUNTY (JENNINGS RANDOLPH FLD) (EKN)

RNP APCH.

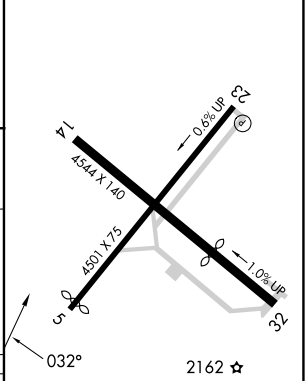
Circling Rwy 14, 23, 32 NA at night. When local altimeter setting not received, use Buckhannon altimeter setting and increase all MDA 100 feet.
 Straight-in minimums NA when using Buckhannon altimeter setting.
 Rwy 5 helicopter visibility reduction below 3/4 SM NA.

MISSED APPROACH: Climb to 5500 direct YOLUY and on track 033° to MUHAP and hold.

ASOS 119.275	CLARKSBURG APP CON ★ 121.15 284.65	CTAF 123.6	122.9 0
------------------------	--	----------------------	----------------



ELEV 1987	TDZE 1972
-----------	-----------



* 3800 when using Buckhannon altimeter setting. ** 3460 when using Buckhannon altimeter setting.	5500	YOLUY	tr 033°	MUHAP
DOFAD	ELEM	JNIFR 4.7 NM to KOBAH	ZAROB 3 NM to KOBAH	KOBAH
5900	4500	*3700	**3360	
6 NM	2.5 NM	1.7 NM	3 NM	0.5 NM

CATEGORY	A	B	C	D
LNVA MDA	3040-1½ 1068 (1100-1½)	3040-1½ 1068 (1100-1½)	3040-3 1068 (1100-3)	NA
CIRCLING	3040-1½ 1053 (1100-1½)	3140-1½ 1153 (1200-1½)	3720-3 1733 (1800-3)	4020-3 2033 (2100-3)

REIL Rwy 23 0
 MRL Rwy 5-23 0

RNAV (GPS) RWY 5

NE-4, 20 FEB 2025 to 20 MAR 2025

NE-4, 20 FEB 2025 to 20 MAR 2025