

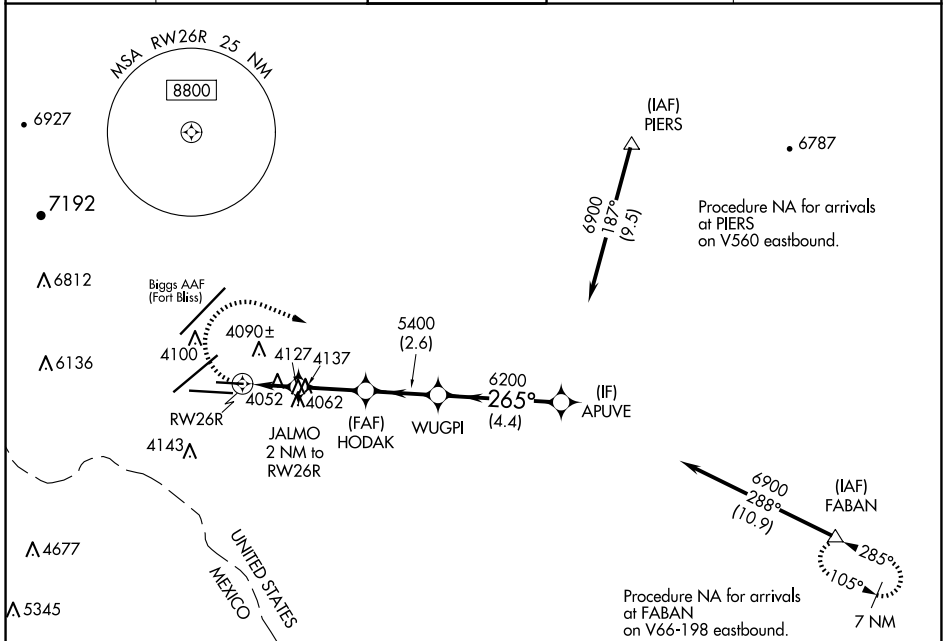
APP CRS	Rwy Idg	5499
265°	TDZE	3950
	Apt Elev	3962

RNAV (GPS) RWY 26R

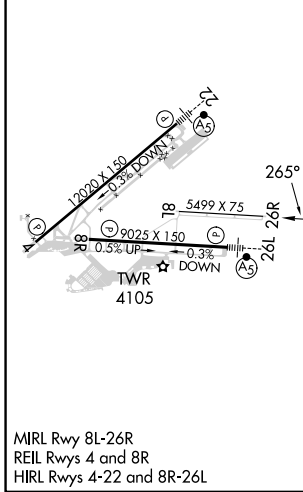
EL PASO INTL (ELP)

RNP APCH-GPS		MISSED APPROACH: Climbing right turn 7500 direct FABAN and hold.		
<p>⚠ Circling NA for Cat D north of Rwy 26R and northwest of Rwy 4. Rwy 26R helicopter visibility reduction below ¼ SM NA.</p> <p>ASR</p>				

D-ATIS	EL PASO APP CON	EL PASO TOWER	GND CON	CLNC DEL
120.0 254.3	124.25 298.85	118.3 239.275	121.9 348.6	125.0 379.1



ELEV 3962	D	TDZE 3950
-----------	----------	-----------



	7500	FABAN	JALMO 2 NM to RW26R	HODAK	WUGPI	APUVE	
		△	1.3 NM to RW26R	≤ 3.00° TCH 45	6200	6900	
			4620	5400			
			1.3 NM	0.7	2.4 NM	2.6 NM	4.4 NM
CATEGORY	A		B		C	D	
LNAV MDA	4400-1		450 (500-1)		4400-1 3/8	450 (500-1 3/8)	
C CIRCLING	4420-1 458 (500-1)		4440-1 478 (500-1)		4480-1 1/2 518 (600-1 1/2)	4680-2 1/4 718 (800-2 1/4)	

EL PASO, TEXAS
Amdt 1A 29DEC22

31°48'N-106°23'W

RNAV (GPS) RWY 26R

SC-3, 20 FEB 2025 to 20 MAR 2025

SC-3, 20 FEB 2025 to 20 MAR 2025