

ENID, OKLAHOMA

ILS or LOC RWY 35L

VANCE AFB (KEND)

LOC I-JUS 111.55	APCH CRS 355°	Rwy Idg 9217
		TDZE 1307
		Arprt Elev 1307

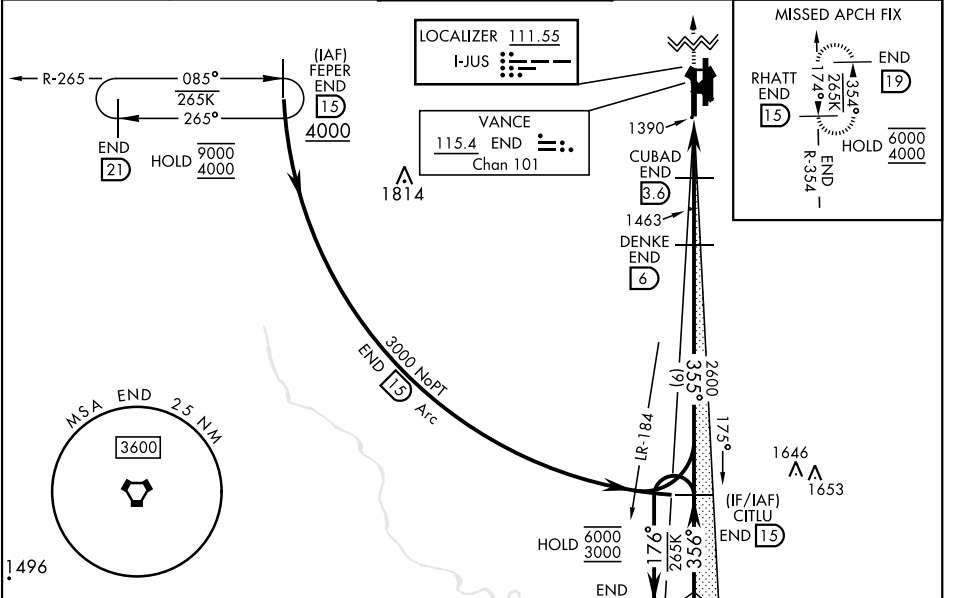
[USAF]

*When ALS inop, increase vis to 1 mile.
 **When ALS inop, increase CAT AB vis to 1 mile;
 CAT CDE vis to 1½ mile.



MISSED APPROACH: Climb to 4000, intercept END VORTAC R-354 to RHATT and hold.

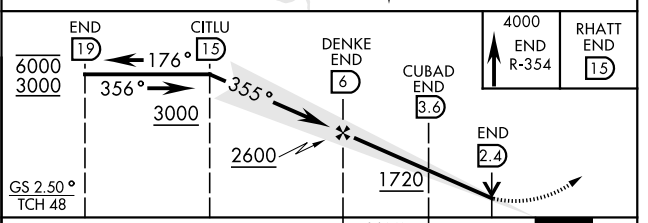
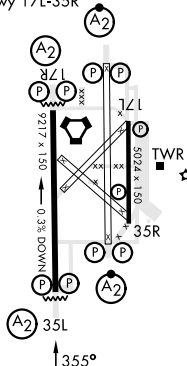
ATIS ★ 115.4 263.15	APP CON 125.45 388.2 EAST 126.75 346.325 WEST	TOWER ★ 124.05 259.1	GND CON 121.675 289.4	CLNC DEL 225.4
-------------------------------	---	--------------------------------	---------------------------------	--------------------------



EMERG SAFE ALT 100 NM 4500

ELEV 1307	TDZE 1307
-----------	-----------

HIRL Rwy 17C-35C, 17R-35L
 MIRL Rwy 17L-35R
 REIL Rwy 17L-35R



CATEGORY	A	B	C	D	E
S-ILS 35L	1507-¾		200	(200-¾)	
S-LOC 35L*	1660-¾		353	(400-¾)	
<input checked="" type="checkbox"/> CIRCLING	1760-1 453 (500-1)	1800-1½ 493 (500-1½)	1900-2 593 (600-2)	1940-2¼ 633 (700-2¼)	
LOCAL ALTIMETER, WITHOUT LAST STEPDOWN FIX					
S-LOC 35L**	1720-¾	413 (500-¾)	1720-1 413 (500-1)		
<input checked="" type="checkbox"/> CIRCLING	1760-1 453 (500-1)	1800-1½ 493 (500-1½)	1900-2 593 (600-2)	1940-2¼ 633 (700-2¼)	

FAF to MAP 4.7 NM

Knots	60	90	120	150	180
Min:Sec	4:42	3:08	2:21	1:53	1:34

ENID, OKLAHOMA
Orig 30NOV23

36°20'N-97°55'W

VANCE AFB (KEND)

ILS or LOC RWY 35L

SC-1, 20 FEB 2025 to 20 MAR 2025

SC-1, 20 FEB 2025 to 20 MAR 2025